

Foundation species loss affects vegetation structure more than ecosystem function in a northeastern USA forest

David A. Orwig¹, Audrey A. Barker Plotkin¹, Eric A. Davidson², Heidi Lux¹, Kathleen E. Savage² and Aaron M. Ellison¹

¹ Harvard University, Harvard Forest, Petersham, MA, USA

² Woods Hole Research Center, Falmouth, MA, USA

ABSTRACT

Loss of foundation tree species rapidly alters ecological processes in forested ecosystems. *Tsuga canadensis*, an hypothesized foundation species of eastern North American forests, is declining throughout much of its range due to infestation by the nonnative insect *Adelges tsugae* and by removal through pre-emptive salvage logging. In replicate 0.81-ha plots, *T. canadensis* was cut and removed, or killed in place by girdling to simulate adelgid damage. Control plots included undisturbed hemlock and mid-successional hardwood stands that represent expected forest composition in 50–100 years. Vegetation richness, understory vegetation cover, soil carbon flux, and nitrogen cycling were measured for two years prior to, and five years following, application of experimental treatments. Litterfall and coarse woody debris (CWD), including snags, stumps, and fallen logs and branches, have been measured since treatments were applied. Overstory basal area was reduced 60%–70% in girdled and logged plots. Mean cover and richness did not change in hardwood or hemlock control plots but increased rapidly in girdled and logged plots. Following logging, litterfall immediately decreased then slowly increased, whereas in girdled plots, there was a short pulse of hemlock litterfall as trees died. CWD volume remained relatively constant throughout but was 3–4× higher in logged plots. Logging and girdling resulted in small, short-term changes in ecosystem dynamics due to rapid regrowth of vegetation but in general, interannual variability exceeded differences among treatments. Soil carbon flux in girdled plots showed the strongest response: 35% lower than controls after three years and slowly increasing thereafter. Ammonium availability increased immediately after logging and two years after girdling, due to increased light and soil temperatures and nutrient pulses from leaf-fall and reduced uptake following tree death. The results from this study illuminate ecological processes underlying patterns observed consistently in region-wide studies of adelgid-infested hemlock stands. Mechanisms of *T. canadensis* loss determine rates, magnitudes, and trajectories of ecological changes in hemlock forests. Logging causes abrupt, large changes in vegetation structure whereas girdling (and by inference, *A. tsugae*) causes sustained, smaller changes. Ecosystem processes depend more on vegetation cover per se than on species composition. We conclude that the loss of this late-successional foundation species will have long-lasting impacts on forest structure but subtle impacts on ecosystem function.

Submitted 13 November 2012

Accepted 28 January 2013

Published 19 February 2013

Corresponding author

Aaron M. Ellison,
aellison@fas.harvard.edu

Academic editor

Michael Huston

Additional Information and
Declarations can be found on
page 21

DOI 10.7717/peerj.41

© Copyright
2013 Orwig et al.

Distributed under
Creative Commons CC-BY 3.0

OPEN ACCESS

Subjects Ecology, Ecosystem Science

Keywords *Adelges tsugae*, Eastern hemlock, Hemlock woolly adelgid, Primary productivity, Logging, Nutrient cycling, Soil respiration, *Tsuga canadensis*, Forest dynamics

INTRODUCTION

Changes in the distribution and abundance of canopy trees have system-wide impacts on ecological processes in forests (Lovett *et al.*, 2006; Wardle *et al.*, 2011; Hicke *et al.*, 2012). Changes in species composition and associated ecological impacts also lead to changes in the values – including economic, utilitarian, and aesthetic – that we place on forest ecosystems (e.g., Aukema *et al.*, 2011; Cardinale *et al.*, 2012). The vast majority of studies of the impacts of species loss on ecological processes in forests and other ecosystems have examined how changes in the absolute number (or percent) of species lost affects a wide range of ecosystem services (recently reviewed by Wardle *et al.*, 2011; Cardinale *et al.*, 2012; Hooper *et al.*, 2012; Naeem, Duffy & Zavaleta, 2012). However, species are not lost from ecosystems at random (e.g., Bunker *et al.*, 2005) and it remains an open question whether particular species with particular characteristics will disproportionately change how ecosystems function (Bunker *et al.*, 2005; Suding *et al.*, 2008; B Baiser & AM Ellison, unpublished data).

Foundation species (*sensu* Ellison *et al.*, 2005a) define and structure many terrestrial, aquatic, and marine ecosystems, yet because foundation species often are abundant and widespread, their role in structuring ecosystems is often underappreciated or taken for granted, and they are rarely of explicit conservation interest (Gaston, 2010). Ellison *et al.* (2005a) suggested that the loss of foundation species can cause strong, widespread, and long-lasting changes to forest ecosystems because forest-wide biological diversity and ecosystem processes such as primary productivity and fluxes of energy and nutrients are hypothesized to depend more on foundation species than on any other species in the system. Examples where loss of dominant, and possibly foundational, tree species have had large impacts on forest ecology include: regional loss of associated fauna as white pines (*Pinus* subgenus *strobus*) in western North America succumb to white pine blister rust (*Cronartium ribicola* A. Dietr.); changes in canopy structure as a result of fire suppression, irruptions of mountain pine beetle (*Dendroctonus ponderosae* Hopkins), and climatic change (Kendall & Keane, 2001; Tomback & Achuff, 2010); shifts in understory composition, recruitment, and regeneration dynamics following loss of American beech (*Fagus grandifolia* Ehrh.), American chestnut (*Castanea dentata* (Marsh.) Borkh.) or American elm (*Ulmus americana* L.) due to beech-bark disease (*Nectria coccinea* (Pers. ex. Fr.) Fries var. *faginata* Lohman, Watson and Ayers), chestnut blight (*Cryphonectria parasitica* (Murrill) Barr.), and Dutch elm disease (*Ceratocystis ulmi* (Buism.) C. Moreau), respectively (McBride, 1973; Houston, 1975; Barnes, 1976; Huenneke, 1983; Twery & Patterson, 1984; Myers, Walck & Blum, 2004; Lovett *et al.*, 2006); changes in faunal (Wills, 1993) and macrofungal diversity (Anderson *et al.*, 2010), and functional diversity of soil bacteria involved in carbon and nitrogen cycling (Cai *et al.*, 2010) following loss of *Eucalyptus* to *Phytophthora* outbreaks in Australia; bottom-up control by *Populus*

spp. of associated herbivorous arthropod populations, which in turn mediates how insectivorous birds influence future tree growth in the southwestern United States (Bridgeland et al., 2010); and the dependence of benthic biological diversity, productivity, and nutrient cycling on a handful of species in mangrove forests (e.g., Nagelkerken et al., 2008; Barbier et al., 2011).

Tsuga canadensis (L.) Carr. (eastern hemlock), an hypothesized foundation tree species (Ellison et al., 2005a), covers $\approx 10\,000\text{ km}^2$ and comprises $\approx 2 \times 10^8\text{ m}^3$ of harvestable and merchantable volume from the southern Appalachian Mountains north into southern Canada and west across the upper Midwestern states in North America (Fig. 1; Smith et al., 2009). Like other putative foundation tree species, *T. canadensis* can account locally for >50% of the total basal area, and its ecological traits create unique terrestrial and aquatic habitats. For example, the deep shade cast by its dense evergreen foliage limits establishment of most understory species (Rogers, 1980; D'Amato, Orwig & Foster, 2009). Its refractory leaf litter and the cool temperatures at the soil surface beneath dark hemlock canopies result in low rates of decomposition and nutrient cycling, rapid accumulation of organic matter (Aber & Melillo, 1991; Jenkins, Aber & Canham, 1999), and nutrient-poor soils. The combination of nearly year-round low photosynthetic and evapotranspiration rates of *T. canadensis* (Hadley et al., 2008) stabilizes stream base-flows and decreases daily variation in stream temperatures (Ford & Vose, 2007; Nuckolls et al., 2009). The microhabitat created by eastern hemlock supports unique assemblages of birds, arthropods, salamanders, and fish (Snyder et al., 2002; Tingley et al., 2002; Ellison et al., 2005b; Dilling et al., 2007; Mathewson, 2009; Rohr, Mahan & Kim, 2009; Mallis & Rieske, 2011; Sackett et al., 2011).

Despite its widespread distribution and high abundance, both locally and regionally, *T. canadensis* is rapidly disappearing across an increasing extent of its range. The hemlock woolly adelgid (*Adelges tsugae* Annand), an invasive insect from Japan that in North America feeds exclusively on eastern hemlock and its southeastern (USA) endemic congener, Carolina hemlock (*T. caroliniana* Engelm.), is moving rapidly both southward and northward (Fitzpatrick et al., 2012), killing >90% of hemlocks it encounters (Orwig, Foster & Mausel, 2002; Eschtruth et al., 2006; Knoepp et al., 2011). Hemlock has little resistance to the adelgid (Ingwell & Preisser, 2011) and as yet has shown no recovery from chronic infestations (McClure, 1995; Orwig et al., 2012). In the absence of successful biological control programs (Onken & Reardon, 2011) and economically or logistically feasible chemical control options (Ward et al., 2004; Cowles, 2009), pre-emptive cutting or salvage logging of hemlock has been a common management response to declining and dead hemlock stands affected by the adelgid (Kizlinski et al., 2002; Orwig, Foster & Mausel, 2002; Ward et al., 2004; Foster & Orwig, 2006).

The combination of adelgid-induced morbidity and mortality, and pre-emptive salvage logging of *T. canadensis* is radically changing the structure of eastern USA forests. Region-wide, forest productivity and carbon sequestration are expected to decline by as much as 8%–12%, but establishment of mid-successional hardwoods (e.g., *Betula* and *Acer* species) is forecast to result in forest carbon uptake recovering to, or even exceeding

pre-adelgid conditions only after 50 years or more ([Albani et al., 2010](#); [Knoepp et al., 2011](#); [Fitzpatrick et al., 2012](#)). These model forecasts of the impact of the adelgid have been made at coarse-grained scales (2.5° grid), but local impacts may fall short of or dramatically exceed regional averages (PC Lemos & AC Finzi, unpublished data). Fifteen years of observational studies of marked plots have illustrated high variance in forest dynamics (e.g., [Orwig, Foster & Mausel, 2002](#); [Orwig et al., 2008](#); [Orwig et al., 2012](#)), portions of which may be attributable to differences in climate, short- versus long-term impacts of logging, and/or fine-scale effects of the adelgid itself ([Stadler et al., 2005](#); [Stadler, Müller & Orwig, 2006](#)).

Only experimental studies can distinguish reliably among differences due to *in situ* forest disintegration or logging, and so in 2003 we established a multi-hectare, long-term manipulative study – the Harvard Forest Hemlock Removal Experiment (HF-HeRE; [Ellison et al., 2010](#)) – to study the various forest responses to the loss of hemlock. This ongoing experiment compares and contrasts the rates, magnitudes, and trajectories of changes in hemlock-dominated stands to two mechanisms of foundation species loss: (1) death in place of eastern hemlock by girdling, which mimics tree disintegration that follows infestation by the hemlock woolly adelgid ([Yorks, Leopold & Raynal, 2003](#)); or (2) loss and removal of hemlock following commercial logging ([Brooks, 2001](#)). Patterns, processes, and dynamics studied include: forest vegetation structure, standing and downed dead wood, and three measures of ecosystem function: litterfall (a substantial component of net primary productivity; e.g., [Zheng, Prince & Hame, 2004](#)), soil carbon flux, and soil nitrogen dynamics.

In this paper, we report two years of pre-treatment data and the first five years of changes in vegetation structure and ecosystem functions following our experimental manipulations but prior to the infestation of our experimental plots by the adelgid. In particular, we examine and test three predictions that, relative to both hemlock and hardwood controls:

- (1) Vegetation structure – species richness and cover of understory herbs, and density and cover of tree seedlings and saplings – increases slowly following girdling but more rapidly following hemlock removal and soil scarification from logging;
- (2) Volume of standing dead wood and snags is highest in girdled plots, but downed coarse woody debris is higher in logged plots;
- (3) Core ecosystem functions – litterfall and soil carbon fluxes decline while rates of soil nitrogen (as nitrate and ammonium) mineralization and soil nitrogen availability increase then decline slowly in girdled plots but rapidly in logged plots.

Other papers have described changes in the microenvironment ([Lustenhouwer, Nicoll & Ellison, 2012](#)), species composition of the seed bank and understory vegetation ([Sullivan & Ellison, 2006](#); [Farnsworth, Barker Plotkin & Ellison, 2012](#)), diversity of ground-dwelling arthropods ([Sackett et al., 2011](#)), and nitrogen leaching ([Templer & McCann, 2010](#)) in the first decade following the canopy manipulations in HF-HeRE. In total, our results lead us to hypothesize that vegetation structure and ecosystem functions in the girdled and logged

plots will converge through time, and, at least on decadal scales, come to resemble the attributes of the hardwood control plots.

We note that we purposely sited HF-HeRE north of the northern limit (in 2003) of the hemlock woolly adelgid so that we could first identify different effects on forest structure and function caused by two different kinds of physical loss of *T. canadensis*. This experiment complements a suite of studies in which we have examined landscape-level spread of the adelgid (Orwig, Foster & Mauseel, 2002; Fitzpatrick et al., 2012; Orwig et al., 2012), compositional and structural changes in forest vegetation (Orwig & Foster, 1998), and ecosystem functions in forests infested by the adelgid (Cobb, Orwig & Currie, 2006; Orwig et al., 2008) or that have been salvage logged (Kizlinski et al., 2002, DA Orwig et al., unpublished data). Subsequent data collected after the adelgid colonizes HF-HeRE (which occurred in 2010), will be used to further distinguish effects on eastern North American forests of physical disintegration of *T. canadensis* from additive, interactive, and/or nonlinear effects of the insect itself (e.g., Stadler et al., 2005; Stadler, Müller & Orwig, 2006). The unique experimental design – with measurements made pre-treatment; post-treatment but pre-adelgid; and post-treatment, post-adelgid – distinguishes HF-HeRE from other studies, both observational and experimental, that have examined the effects of foundation species loss but that cannot separate effects of physical loss alone from those of the agent of loss itself.

MATERIALS AND METHODS

Site Description

HF-HeRE is located within the 121-ha Simes Tract (42.47°–42.48°N, 72.22°–72.21°W; elevation 215–300 m a.s.l.) at the Harvard Forest Long Term Ecological Research Site in Petersham, Massachusetts, USA (Ellison et al., 2010, Fig. 1). As in most New England forests, the Simes Tract was cleared for agriculture in the early and mid-1800s. Many of the trees that had regenerated following agricultural abandonment in the mid- to late-1800s were blown down in the 1938 Great Hurricane, and analysis of tree-cores from the tract show that the trees in our experimental plots average 55–80 years old (Bettmann-Kerson, 2007; AM Ellison, DA Orwig & AA Barker Plotkin, unpublished data). The soils are predominantly coarse-loamy, mixed, active, mesic Typic Dystrudepts in the Charlton Series that are derived from glacial till (USDA). Across the eight HF-HeRE study plots, the soil pH ranges from 3.0–3.4 in the organic layer and from 3.5–4.0 in the mineral layer, and the soil C:N ratios range from 26–33. Much of the central portion of the tract is poorly drained or swampy; elevated areas are better drained. *Tsuga canadensis* and *Acer rubrum* L. (red maple) dominate the poorly drained soils, whereas *T. canadensis*, along with *Quercus rubra* L. and *Q. alba* L. (red and white oaks), and *Pinus strobus* L. (white pine) predominate on hills and slopes. *Betula lenta* L. (black birch), *Acer saccharum* Marsh. (sugar maple), and other hardwoods grow at low frequency and density throughout the tract (Ellison et al., 2010).

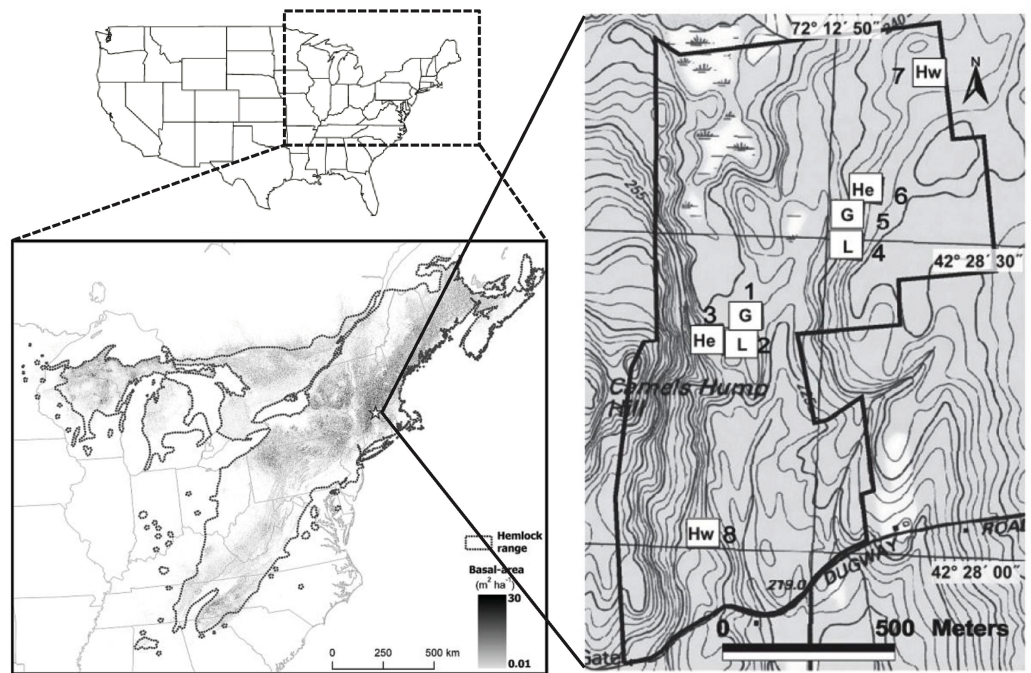


Figure 1 Location of the Harvard Forest Hemlock Removal Experiment. Location of the Harvard Forest Hemlock Removal Experiment in Massachusetts, USA. The regional map shows the basal area of eastern hemlock at a 1 km² resolution. The inset shows the location of the experimental blocks and treatments. Plots 1, 2, 3, and 8 make up the valley block; plots 4–7 make up the ridge block. Each canopy manipulation treatment – hemlock control (He), girdled (G), logged (L), and hardwood control (Hw) – was applied to a 90 × 90 m plot within each block.

Experimental design and treatments

The complete design of HF-HeRE is described by [Ellison et al. \(2010\)](#); only salient details are repeated here. The eight 90 × 90 m (0.81 ha) plots comprising this experiment are grouped in two blocks ([Fig. 1](#)), each consisting of three plots initially dominated by *T. canadensis* and one plot of mixed hardwoods ([Table 1](#)). The “valley” block (plots 1–3 and 8) is in undulating terrain bordered on its northern edge by a *Sphagnum*-dominated wetland (permission to work in this wetland and in the adjacent bordering vegetation [“buffer zone”] was provided by the Petersham, Massachusetts, Conservation Commission). The “ridge” block (plots 4–7) is on a forested ridge. Plots were identified in 2003 and sampled for two growing seasons (spring/summer in each of 2003 and 2004) prior to applying canopy manipulation treatments – girdling, or harvesting of standing *T. canadensis* along with cutting of merchantable hardwoods and *P. strobus* – to one plot in each block.

In the girdled treatment plots, the bark and cambium of all individual *T. canadensis* trees, saplings, and seedlings were cut through using chain saws or hand knives over a 2-day period in May 2005. Girdled trees died over a 2-year period but were left standing in place to simulate the physical decline and mortality of hemlock resulting from infestation by the hemlock woolly adelgid ([Ellison et al., 2010](#)). No other species were girdled and there was no site disturbance other than walking between trees.

Table 1 Changes in total average basal area ($\text{m}^2 \text{ha}^{-1}$) and density (ha^{-1}) in the treatment plots of the Harvard Forest Hemlock Removal Experiment.

Canopy manipulation	Year	Basal area		Stem density	
		Valley plots	Ridge plots	Valley plots	Ridge plots
Hemlock control	2004	45.6	52.1	940	678
	2009	47.3	54.0	842	637
Girdled	2004	50.3	53.0	1354	1011
	2009	15.9	17.6	395	331
Logged	2004	47.9	49.5	1212	1089
	2009	15.4	13.8	469	373
Hardwood control	2004	29.7	35.6	1122	885
	2009	31.0	37.7	990	807

In the logged treatment plots, all *T. canadensis* trees >20 cm diameter at breast height (DBH, measured 1.3 m above ground) and 50% of the commercially valuable *Q. rubra* and *P. strobus* were felled using a chainsaw and removed using a skidder between February and April 2005, when the ground was frozen. Because this logging operation mimicked the effects of an intensive commercial hemlock salvage operation, trees of small size, poor quality, or little economic value, such as *A. rubrum* and *B. lenta* were also removed to facilitate log removal or to improve future stand quality, but some good-quality *Q. rubra* and *P. strobus* were retained. We recognize that the removal of tree species other than *T. canadensis* can have some impacts on changes forest dynamics in the otherwise hemlock-dominated stands. However, in the logged plots, *T. canadensis* accounted initially for $>50\%$ of the basal area, but made up $>80\%$ of both the number of felled trees and their basal area (Ellison et al., 2010). Thus, the effects of hemlock loss were likely to dominate observed responses of the forest to this canopy manipulation.

Two control plots in each block were not manipulated. In each block, one of each of these control plots was dominated by hemlock, the other by mid-successional hardwoods of the same general age of the remaining forest (55–80 years). The latter control plots represents the most likely future forest conditions after hemlock has disappeared from the landscape (Orwig & Foster, 1998; Ellison et al., 2010).

Measurements

Vegetation structure

We measured species richness and cover of understory herbs, and density and cover of tree seedlings and saplings to determine how these attributes of vegetation structure varied among the two canopy manipulation treatments and the two different controls (Prediction 1). In 2003 (prior to canopy manipulations), we established two transects running through the central $30 \text{ m} \times 30 \text{ m}$ of each plot to quantify understory richness, cover, and density. Five 1-m^2 subplots were spaced evenly along each transect and have been sampled annually since 2003. In each subplot, tree seedlings (<1.3 m tall) were counted and percent cover of tree seedlings, herbs, shrubs, ferns, and grasses was estimated to the nearest one percent.

Grasses and sedges were identified only to genus as most lacked flowers or fruits necessary for accurate species-level identification. A species list has been compiled annually for the central 30 × 30-m core area of each plot. Nomenclature follows [Haines \(2011\)](#). The number of sapling-sized trees (>1.3 m tall but <5 cm DBH) was tallied by species in the 30 × 30-m core area of each plot in 2005, 2007 and 2009.

In 2003–2004, all trees ≥5 cm DBH in each plot were tagged with aluminum tags, identified, measured (DBH) and mapped (x , y , z coordinates relative to a plot corner) using a compass, auto-level, and stadia rods. Initial basal area was higher in the hemlock plots (45.6–53 m² ha⁻¹) than in the hardwood control plots (29.7–35.6 m² ha⁻¹) and basal area was slightly higher in the ridge block than in the valley block (species composition data reported in Table 1 of [Ellison et al. \(2010\)](#)). Initial stem density ranged from 678 stems ha⁻¹ in the ridge hemlock control plot to 1354 stems ha⁻¹ in the valley girdled plot. *Tsuga canadensis* comprised 50%–69% of initial basal area and 55%–70% of initial stem density in the six plots initially dominated by this species (hemlock control, logged, and girdled plots). In the hardwood control plots, *T. canadensis* comprised <10% of the initial basal area and 10%–11% of the initial stem density. Other species that comprised >10% initial basal area in any plot included *A. rubrum*, *A. saccharum* (hardwood valley plot only), *B. lenta*, *Q. rubra*, and *P. strobus*. Decline and death of trees in the girdled plots was tracked following treatments; most *T. canadensis* had died within 24 months ([Ellison et al., 2010](#)). In 2009, each tree was assessed for survival and diameter growth (for living stems).

Standing and downed dead wood

Prediction 2 addresses changes in volume of coarse woody debris (CWD) – standing dead trees (snags), stumps, and volume of fallen boles and branches >7.5 cm in diameter – as a function of canopy manipulation treatment. These variables have been surveyed biennially since 2005 (post-treatment only). In summer 2005, just after the girdling and logging were completed, eight transects were established in each plot beginning from each cardinal and ordinal plot corner/edge and extending 35–50 m towards the plot center. To measure standing dead wood, snags and stumps were sampled along a 4-m wide strip plot that straddles the line transect. Species (or species group) were recorded for each individual stump or snag; its lower diameter was measured, and its top diameter and height either were measured directly or estimated if the snag height exceeded the length of a stadia rod. From these measurements, snag volume was calculated as the frustum of a cone ([Harmon & Sexton, 1996](#)). Volume of downed wood was estimated using the line-intercept method ([Van Wagner, 1968](#)). The diameter, decay class ([Rice et al., 2004](#)), and species (or species group) of each piece that intersected the line was recorded.

Ecosystem function

Prediction 3 is that primary productivity, soil carbon flux, and soil nutrient cycling and availability should decline slowly in the girdled plots and rapidly in the logged plots. We used litterfall as an index of annual aboveground productivity (e.g., [Zheng, Prince & Hame, 2004](#)). Five litterfall baskets (collection area 0.11 m²) were placed at random

coordinates throughout each 90×90 -m plot. Baskets were placed in the field at the beginning of September 2005 (after canopy manipulations had been applied). Samples were collected quarterly: in early April, mid-June, mid-September, and early December every year. Leaf litter was sorted to major species groups (*Tsuga*, *Pinus*, *Quercus*, *Betula*, *Acer*, other deciduous trees), whereas twigs, bark, and reproductive parts were pooled into one category. After sorting, samples were oven-dried at 70°C for 48 h prior to weighing. Annual litterfall is reported as the total of the June, September and December collections, plus the subsequent year's April collection.

Measurements of soil carbon (C) flux ("soil respiration") were made using a vented, flow-through, non-steady-state system (*Livingston & Hutchinson, 1995*) at six randomly chosen locations in the 30×30 -m core area of each of the six hemlock (control, girdled, logged) plots (2003–2009) and at two randomly chosen locations in the two hardwood control plots (2006–2007). At each location, soil respiration collars, each 25 cm in diameter (0.05 m^2 surface area) and made from thin-walled polyvinylchloride (PVC) tubing cut into 10 cm lengths, were inserted ≈ 5 cm into the ground. Soil respiration was measured manually every 2 weeks during the growing season between 09:00 and 15:00 h using a Li-Cor 6252 portable Infrared Gas Analyzer (IRGA) (Li-Cor Inc., Lincoln, Nebraska, USA) mounted on a backpack frame. The IRGA was connected to a vented white acrylonitrile-butadiene-styrene (ABS) chamber top (10 cm in height) that was then placed over the soil respiration collar. A pump circulated the air at 0.5 L min^{-1} from the chamber top through the IRGA and back to the chamber top. The chamber top was left on the collar for 5 min, and the change in CO_2 concentration within the chamber was recorded using a Hewlett-Packard HP 200LX palmtop computer (Hewlett-Packard, Palo Alto, California, USA). The calibration of the IRGA was checked each day that measurements were made using both zero $\text{mL L}^{-1}\text{ CO}_2$ and $594\text{ mL L}^{-1}\text{ CO}_2$ certified standards. A linear regression of concentration of CO_2 versus time was used to determine the soil respiration rate, which was then corrected for local atmospheric pressure and chamber air temperature. The response variable used in subsequent analyses of treatment effects was soil respiration for the entire sampling period (Day of Year [DOY] 191–273) each year; this value was estimated by linearly interpolating soil respiration measurements between sampling days for each collar and then summing (integrating) all values over the 82-day sampling period.

Total soil respiration is the sum of two belowground components: heterotrophic (microbial and microfaunal respiration) and autotrophic (root respiration). Measurements of soil respiration in the control plots represent the sum of these belowground processes. Thus, to a first approximation, differences in soil respiration between control and either logged or girdled treatments reflect the contribution of eastern hemlock to autotrophic respiration. Decreased soil respiration due to treatment effects were calculated by taking the pre-treatment soil respiration over the sampling season and subtracting from it the post-treatment seasonal soil respiration. These decreases represent a conservative estimate of autotrophic soil respiration in treated plots. Potential limitations to this method include the loss of root biomass, which could reduce heterotrophic respiration of soil organic

matter via lack of priming, and that the newly severed roots may temporarily increase carbon available for heterotrophic respiration.

Because the majority of live tree roots in each plot were killed following logging or girdling of hemlock, and because the percent cover of other vegetation in these treatments at the beginning of this study was very low (<2%), seasonal sums of soil respiration in these canopy manipulation treatments can be used as estimates of heterotrophic soil respiration (*Hanson et al., 2000; Levy-Varon, Schuster & Griffin, 2012*).

Nitrogen (N) mineralization measurements were begun in August 2003, two growing seasons prior to canopy manipulations, using a modified core method (*Hart et al., 1994; Roberston et al., 1999*). In the central 30 × 30-m area of each canopy manipulation plot, closed-topped cores were installed within four, 5 × 5-m, randomly located subplots each year at 7-week intervals during the growing season (May–October), and for a 23-week overwinter (October/November–April) incubation. At the beginning of each sampling period, soil was extracted with sharpened PVC cores (25-cm long) and immediately separated into mineral and organic layers. A second core was incubated in the field for 42–50 days and then removed and separated by horizon. The bottom 2 cm of each core was removed to prevent root invasion from below in incubated cores, and to standardize sample volume among the cores.

Soil samples were returned to the laboratory on ice and processed the next day. Organic and mineral soils were passed through a 5.0-mm mesh screen, weighed for total mass, and subsampled for gravimetric moisture and inorganic N. To determine soil NH₄-N and NO₃-N concentration, ~10 g of organic and mineral soil were placed into 100 ml of 1 M KCl for 48 h (*Aber et al., 1993*). Soil extracts were filtered through a coarse pore filter (0.45–0.6 μm) and inorganic N concentrations were determined colorimetrically with a Lachat 8500 flow-injection autoanalyzer (Lachat Instruments, Inc., Milwaukee, Wisconsin, USA), using the salicylate (*Lachat Instruments Inc., 1990a*) and cadmium reduction methods (*Lachat Instruments Inc., 1990b*) for NH₄-N and NO₃-N, respectively. Net N mineralization was calculated as the difference in concentration of inorganic N (NH₄-N + NO₃-N) in incubated cores minus that in initial samples.

An additional assessment of forest floor N availability and mobility was determined at each soil subplot using mixed-bed cation + anion resin bags (*Binkley & Matson, 1983*). Approximately 10 g of resin was placed in nylon mesh bags and pretreated with 2 M KCl before deployment for 6-month intervals (growing season and overwinter). Resins were deployed at the forest floor – mineral soil interface within 5 cm of where the N mineralization incubations were located. Resins were returned to the laboratory on ice, dried at 105 °C for 24 h, and extracted in 2 M KCl. Inorganic N was determined by the methods described above for soil N extracts.

Statistical analysis and data availability

The experimental design is a one-way blocked analysis of covariance (ANCOVA) (*Ellison et al., 2010; Gotelli & Ellison, 2012*), and analyses reported here were executed using the `lme` function in the `nlme` package in R version 2.9.2 (*R Development Core Team, 2009*;

Pinheiro et al., 2012). In this design, the four canopy manipulations (hemlock control, hemlock girdled, logged, hardwood control) were treated as “fixed” factors, the two blocks were treated as “random” factors, and time entered the model as a covariate. Measures of vegetation structure and ecosystem function parameters were log-transformed as needed to normalize data and equalize variances; data are plotted back-transformed (*Gotelli & Ellison, 2012*). Comparisons among treatments were done using *a priori* contrasts. Although two blocks is the minimum required to allow for estimates of variance within treatments, this small number of blocks provided relatively low statistical power to detect true differences among treatments (i.e., the probability of a Type II error – falsely accepting the null hypothesis – is high). Further, the absence of replication of treatments within blocks precluded estimation of a block \times treatment interaction. Such trade-offs are inevitable in hectare-scale, decades-long experiments, however.

All data presented in this paper are publicly available through the Harvard Forest Data Archive (<http://harvardforest.fas.harvard.edu/data-archive>), in a suite of datasets: HF106 (understory vegetation), HF126 (overstory vegetation), HF161 (litterfall), HF125 (coarse woody debris), HF119 and HF130 (soil respiration), and HF179 (nitrogen pools and dynamics).

RESULTS

Changes in vegetation structure

Overstory trees

Following treatments, the girdled and logged treatments lost 67%–72% of overstory basal area and 61%–71% of overstory stem density (*Table 1*). Only *T. canadensis* was affected in the girdled treatment, but girdled individuals ranged from seedlings to canopy trees and they died within 2 years (data in Fig. 4 of *Ellison et al., 2010*). In contrast, basal area was immediately lost in the logged treatment and included large-diameter *T. canadensis*, some large *Q. rubra* and *P. strobus*, and many smaller *A. rubrum* and *B. lenta* (*Table 1*). By 2009, four years after manipulations, growth of trees in the hemlock and hardwood control treatments resulted in per-plot gains in basal area of 4%–6%; concomitant background mortality led to a per-plot loss of 6%–12% of stems.

Understory vegetation

Understory species richness remained relatively constant in both hemlock control and hardwood treatments over the course of the study, with hardwood treatment plots having the highest herb and shrub richness (*Fig. 2a, Table 2*). Girdled treatment plots had <10 understory species prior to treatment. Species richness in this treatment increased gradually, resulting in a doubling by 2009 (*Fig. 2a, Table 2*). Two nonnative species were first identified in the girdled treatment at low abundance by 2007: *Berberis thunbergii* DC. (Japanese barberry) in the valley girdled plot and *Celastrus orbiculatus* Thunb. (oriental bittersweet) in the ridge girdled plot. The plots in the logged treatment similarly began with low species richness. In contrast to the girdled treatment, understory species richness increased following logging, but then remained approximately constant for the remainder

of the study period (Fig. 2a, Table 2). No nonnative species had recruited into the logged treatment plots by 2009.

Understory vegetation cover remained between 1 and 2% in the hemlock control and from 16 to 32% in the hardwood control treatment throughout the sampling period (Fig. 2b, Table 2). Percent cover of understory vegetation increased slowly in the girdled treatment and exceeded cover in the hemlock control treatment by 2009. Understory cover increased more rapidly in the logged treatment, especially after 2007 (Fig. 2b), significantly exceeding cover in both the hemlock control and the girdled treatments, and equaling levels seen in the hardwood control by 2009 (Fig. 2b). The main species driving the increase in understory cover were early successional opportunists and species with long-lived seed banks, including *Aralia hispida* Vent. (bristly sarsaparilla), *Erechtites hieracifolia* (L.) Raf. ex DC. (pilewort), *Rubus* spp. (raspberries and blackberries), and to a lesser extent, *Lysimachia quadrifolia* L. (whorled loosestrife) and *Dennstaedtia punctilobula* Michx. (T. Moore) (hay-scented fern).

Tree regeneration

Tree seedling density was low in the hemlock control and logged treatments both before and after canopy manipulations (Fig. 2c); it was nearly 10-fold higher in the hardwood control and this significant difference (Table 2) persisted from 2003–2009. Tree seedlings, especially of *B. lenta* and *A. rubrum* increased significantly – to $3.5 \times 10^5 \text{ ha}^{-1}$ – in the girdled treatment through time. Cover of tree seedlings was consistently lowest in hemlock control (<1% cover) and hardwood control ($\approx 5\%$ cover) treatments, but increased slowly and significantly in both girdled (to >40% cover) and logged (to 15% cover) treatments (Fig. 2d; Table 2).

Prior to the manipulations, there were few saplings in any of the plots, and despite some growth, we observed neither significant changes in sapling density through time nor differences in sapling density among treatments (Fig. 2e). The few saplings in the hemlock control treatment were eastern hemlock. Likewise, sapling density was low in the hardwood control treatment throughout the study period; *A. rubrum* and *A. saccharum* were the most common sapling species in the valley hardwood plot, whereas *A. rubrum* and *P. strobus* were more common in the ridge hardwood plot. The girdling treatment removed all *T. canadensis* saplings, and even by 2009, most tree regeneration in the girdled plots was still in the seedling (<1.3-m tall) size class and no stems had grown into the sapling size class until 2009. Most saplings in the logged treatment were killed during logging, but stump sprouts of *A. rubrum* were abundant by 2007 and a few *B. lenta* had grown from seedlings into saplings on the ridge. By 2009, dense stands (3000–6000 saplings ha^{-1}) of *B. lenta* saplings covered the logged treatment plots.

Standing and downed dead wood

Volume of stumps and snags was very low in the hemlock and hardwood controls and in the logged treatment plots (Fig. 2f). Volume of stumps and snags in the girdled treatment was similar to both controls in 2003 but then rose significantly (Table 2), by two orders of magnitude, as the girdled trees died (Fig. 2f). Volume of downed CWD in the logged

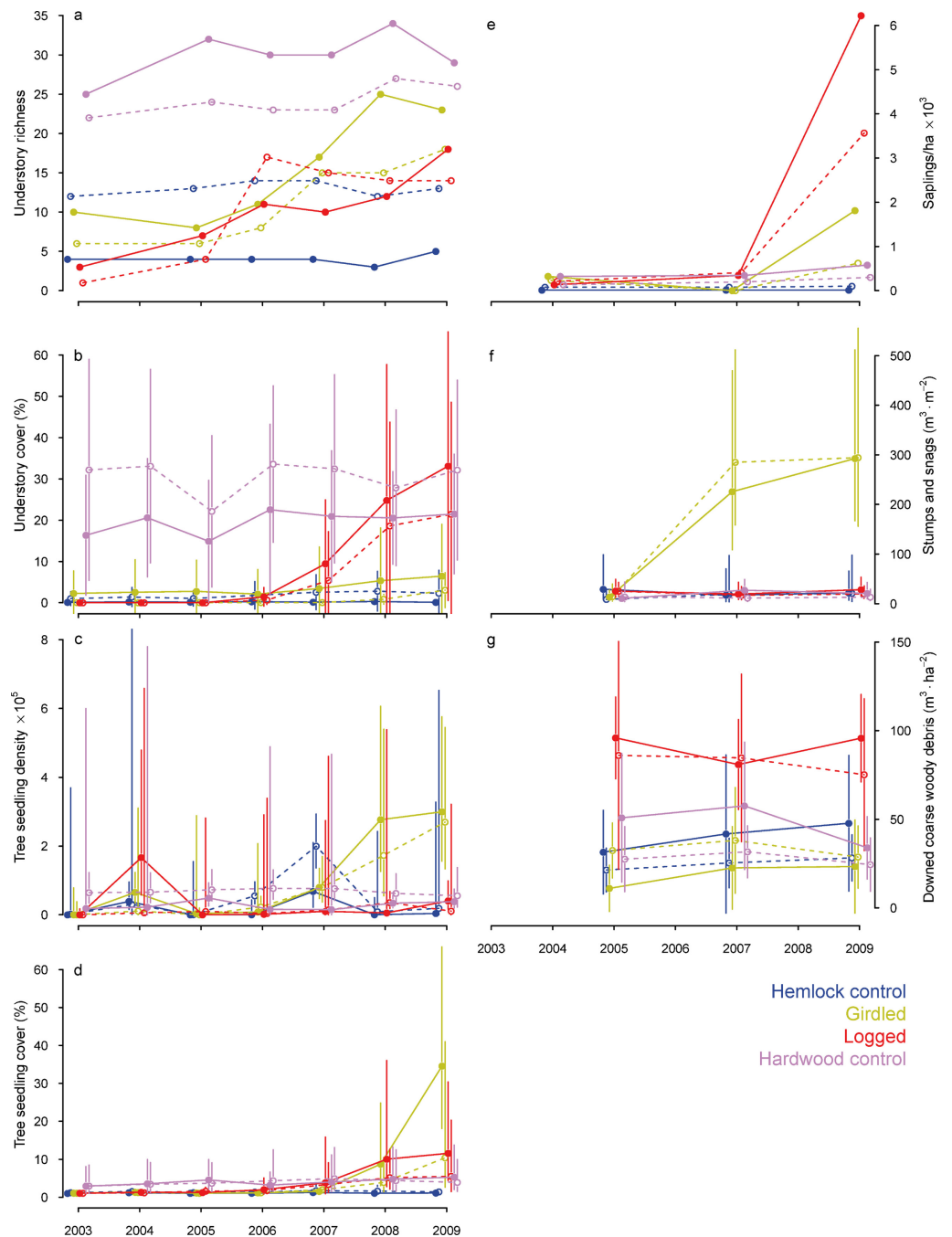


Figure 2 Temporal changes in vegetation structure following hemlock removal. Temporal trajectories of vegetation structural characteristics in the Harvard Forest Hemlock Removal Experiment. Values shown are plot means and standard deviations (where multiple samples were taken in each plot), back-transformed as necessary. Solid lines and symbols are plots in the valley; dashed lines and open symbols are plots on the ridge. Colors indicate treatments: blue – hemlock controls; yellow – all hemlocks girdled; red – hemlocks logged; lavender – hardwood controls.

Table 2 Summary of ANCOVA analyses on vegetation structural characteristics shown in Fig. 2. The models fit were all of the form response variable = $\beta_0 + \beta_1 \times \text{block} + \beta_2 \times \text{time} + \beta_3 \times \text{treatment} + \beta_4 \times \text{time} \times \text{treatment}$; if the response variable was *ln*-transformed prior to analysis, that is noted in the column heading. Values shown in the first four rows are F-statistics, associated degrees of freedom, and P-values; parameter estimates (SE) for the four treatments – C (hemlock control); G (girdled), L (logged), and H (hardwood control) – are given in the next three rows. Parameter estimates are not back-transformed (for models fit to *ln*-transformed data). Parameter estimates that are significantly different from 0 are shown in *italics*.

	Understory richness	Understory cover	ln(Tree seedling density)	ln(Tree seedling cover)	ln(Sapling density + 1)	ln(Snag and stump volume)	CWD volume
<i>Sources of variation</i>							
Intercept	$F_{1,39} = 671.34$ $P < 0.0001$	$F_{1,47} = 132.35$ $P < 0.0001$	$F_{1,47} = 2967.94$ $P < 0.0001$	$F_{1,47} = 0.03$ $P = 0.8615$	$F_{1,15} = 148.05$ $P < 0.0001$	$F_{1,15} = 1135.32$ $P < 0.0001$	$F_{1,15} = 151.22$ $P < 0.0001$
Time	$F_{1,39} = 23.65$ $P < 0.0001$	$F_{1,47} = 21.82$ $P < 0.0001$	$F_{1,47} = 11.80$ $P = 0.0012$	$F_{1,47} = 82.57$ $P < 0.0001$	$F_{1,15} = 1.27$ $P = 0.2779$	$F_{1,15} = 10.85$ $P = 0.0049$	$F_{1,15} = 0.00$ $P = 0.9867$
Treatment	$F_{3,39} = 53.13$ $P < 0.0001$	$F_{3,47} = 80.34$ $P < 0.0001$	$F_{3,47} = 2.55$ $P = 0.0668$	$F_{3,47} = 32.84$ $P < 0.0001$	$F_{3,15} = 2.85$ $P = 0.0728$	$F_{3,15} = 14.53$ $P = 0.0001$	$F_{3,15} = 43.51$ $P < 0.0001$
Time × Treatment	$F_{3,39} = 4.29$ $P = 0.0104$	$F_{3,47} = 12.58$ $P < 0.0001$	$F_{3,47} = 4.16$ $P = 0.0108$	$F_{3,47} = 15.14$ $P < 0.0001$	$F_{3,15} = 0.49$ $P = 0.6929$	$F_{3,15} = 7.39$ $P = 0.0029$	$F_{3,15} = 0.90$ $P = 0.4634$
<i>Parameter estimates</i>							
Intercept (β_0)	8.38 (1.57)	0.78 (1.62)	10.04 (0.34)	-1.98 (0.33)	3.42 (1.18)	3.22 (0.39)	25.42 (8.24)
Time (β_2)	0.06 (0.58)	0.15 (0.62)	0.18(0.12)	0.22 (0.12)	0.02 (0.39)	0.08 (0.13)	2.89 (2.56)
Treatment (β_3)	G: 0.44 (2.22) L: -2.12 (2.22) H: 17.34 (2.22)	G: 0.49 (2.19) L: 0.32 (2.19) H: 23.71 (2.19)	G: 0.17 (0.42) L: 0.21 (0.42) H: 1.07 (0.42)	G: 0.15 (0.42) L: 0.88 (0.42) H: 3.50 (0.42)	G: 0.55 (1.67) L: 1.71 (1.67) H: 1.94 (1.67)	G: -0.29 (0.55) L: 0.05 (0.55) H: -0.37 (0.55)	G: -2.08 (10.81) L: 64.45 (10.81) H: 18.51 (10.81)
Time × Treat (β_4)	G: 2.49 (0.82) L: 2.25 (0.82) H: 0.68 (0.82)	G: 0.38 (0.88) L: 4.59 (0.88) H: 0.23 (0.88)	G: 0.36 (0.17) L: -0.05 (0.17) H: -0.22(0.17)	G: 0.73 (0.17) L: 0.7 (0.17) H: -0.14 (0.17)	G: 0.08 (0.56) L: 0.61 (0.56) H: 0.11 (0.56)	G: 0.66 (0.18) L: -0.10 (0.18) H: 0.04 (0.18)	G: -1.82 (3.62) L: -4.28 (3.62) H: -5.40 (3.62)

Table 3 Summary of ANCOVA analyses on ecosystem functional characteristics shown in Fig. 3. The models fit were all of the form response variable = $\beta_0 + \beta_1 \times \text{block} + \beta_2 \times \text{time} + \beta_3 \times \text{treatment} + \beta_4 \times \text{time} \times \text{treatment}$; if the response variable was *ln*-transformed prior to analysis, that is noted in the column heading. Values shown in the first four rows are F-statistics, associated degrees of freedom, and P-values; parameter estimates (SE) for the four treatments – C (hemlock control); G (girdled), L (logged), and H (hardwood control) – are given in the next three rows. Parameter estimates are not back-transformed (for models fit to *ln*-transformed data). Parameter estimates that are significantly different from 0 are shown in *italics*.

	ln(litterfall)	ln(hemlock litterfall)	Soil C flux	ln(NH ₄)	NO ₃	ln(N mineralization)
<i>Sources of variation</i>						
Intercept	$F_{1,23} = 10821.55$ $P < 0.0001$	$F_{1,23} = 3.96$ $P = 0.0587$	$F_{1,29} = 126.44$ $P < 0.0001$	$F_{1,47} = 2347.54$ $P < 0.0001$	$F_{1,47} = 8.35$ $P = 0.0058$	$F_{1,47} = 397.38$ $P < 0.0001$
Time	$F_{1,23} = 0.14$ $P = 0.7105$	$F_{1,23} = 6.46$ $P = 0.0182$	$F_{1,29} = 0.84$ $P = 0.3665$	$F_{1,47} = 2.53$ $P = 0.1183$	$F_{1,47} < 0.01$ $P = 0.9922$	$F_{1,47} = 5.66$ $P = 0.0214$
Treatment	$F_{3,23} = 15.95$ $P < 0.0001$	$F_{3,23} = 12.45$ $P < 0.0001$	$F_{2,29} = 5.69$ $P = 0.0083$	$F_{3,47} = 9.00$ $P < 0.0001$	$F_{3,47} = 2.44$ $P = 0.0757$	$F_{3,47} = 2.26$ $P = 0.0933$
Time × Treatment	$F_{3,23} = 3.26$ $P = 0.0399$	$F_{3,23} = 5.53$ $P = 0.0052$	$F_{2,29} = 2.05$ $P = 0.1475$	$F_{3,47} = 2.14$ $P = 0.1075$	$F_{3,47} = 0.91$ $P = 0.4435$	$F_{3,47} = 2.39$ $P = 0.0806$
<i>Parameter estimates</i>						
Intercept (β_0)	3.86 (0.20)	2.87 (1.16)	0.29 (0.03)	4.67 (0.25)	62.80 (37.73)	-1.04 (0.14)
Time (β_2)	0.00 (0.06)	0.00 (0.33)	0.01 (0.01)	-0.20 (0.10)	-9.77 (11.64)	-0.14 (0.06)
Treatment (β_3)	G: 0.36 (0.27) L: -0.94 (0.27) H: 0.00 (0.27)	G: 2.43 (1.50) L: -2.53 (1.50) H: -2.37 (1.50)	G: -0.02 (0.03) L: 0.0 (0.3)	G: 0.46 (0.35) L: 0.84 (0.35) H: -0.16 (0.35)	G: 15.95 (41.15) L: 59.44 (41.15) H: -17.85 (41.15)	G: -0.05 (0.20) L: 0.23 (0.20) H: -0.09 (0.20)
Time × Treat (β_4)	G: -0.16 (0.09) L: 0.12 (0.09) H: 0.01 (0.09)	G: -1.58 (0.47) L: 0.10 (0.47) H: -0.22 (0.47)	G: 0.02 (0.01) L: 0.01 (0.01)	G: 0.33 (0.14) L: 0.11 (0.14) H: 0.04 (0.14)	G: 25.44 (16.46) L: 4.49 (16.46) H: 8.92 (16.46)	G: 0.20 (0.08) L: 0.05 (0.08) H: 0.05 (0.08)

treatment was 2–3× greater than in any other treatment (Fig. 2g, Table 2). This trend persisted through the five post-treatment years, although CWD volume declined from 2005–2009 as the wood decayed.

Ecosystem function

Litterfall

Litterfall in the hemlock and hardwood controls were not significantly different from one another and remained relatively constant ($3\text{--}4 \times 10^3 \text{ kg ha}^{-1}$) over the course of the study (Fig. 3a, Table 3). Total litterfall and hemlock litterfall amounts were significantly affected by hemlock removal (Table 3), and the patterns of change in canopy structure were reflected immediately in litterfall (Figs. 3a, 3b). A strong pulse of litter occurred in the girdled treatment in Spring–Summer 2006, one year after *T. canadensis* were girdled (Fig. 3a). Hemlock litter comprised >80% of the total litterfall collected in the girdled treatment during April–September 2006 (Fig. 3b). Subsequently, total litterfall in this treatment increased to about the same amount as in the hemlock and hardwood controls by 2009, but was composed mainly of *Betula*, *Quercus* and *Pinus* litter (data not shown). Litterfall in the logged plots was significantly reduced by logging, and slowly increased during the four years after logging to nearly 50% of that observed in the controls (Fig. 3a).

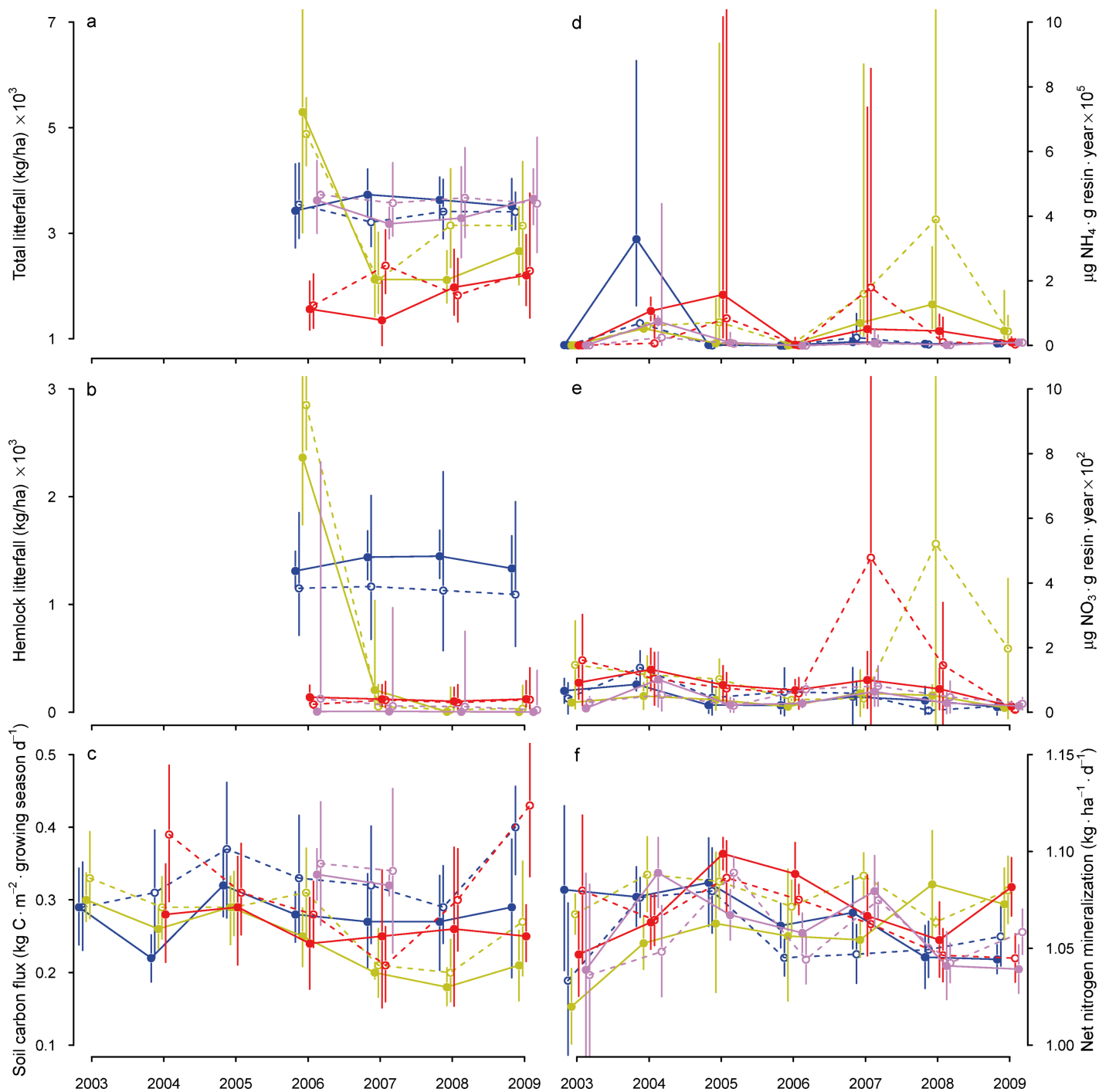


Figure 3 Temporal changes in ecosystem dynamics following hemlock removal. Temporal trajectories of ecosystem functional characteristics in the Harvard Forest Hemlock Removal Experiment. Values shown are plot means and standard deviations (where multiple samples were taken in each plot), back-transformed as necessary. Solid lines and symbols are plots in the valley; dashed lines and open symbols are plots on the ridge. Colors indicate treatments: blue – hemlock controls; yellow – all hemlocks girdled; red – hemlocks logged; lavender – hardwood controls.

Soil respiration

Average seasonal soil respiration dynamics showed some changes as a function of hemlock canopy removal (Fig. 3c), but within-plot variation exceeded among-treatment variation in soil respiration (Fig. 3c; Table 3). By differencing, hemlock roots accounted for approximately 35% of the total soil respiration in intact hemlock stands.

Nitrogen dynamics

Hemlock removal led to transient increases in ammonium (NH_4^+) and nitrate (NO_3^-) availability in soils (peaks in Figs. 3d, 3e). As with measures of soil respiration, within-treatment heterogeneity exceeded among-treatment variation in NO_3^- availability, and neither treatment significantly altered soil NO_3^- availability (Table 3). Nitrate mobility remained low following cutting or girdling, except for a 2-year pulse beginning in 2008 in the girdled plot on the ridge and beginning in 2007 in the logged plot on the ridge (Fig. 3e).

Across all treatments, net nitrogen mineralization declined significantly through time (Table 3), but within-treatment variation exceeded among-treatment variation throughout the study (Fig. 3f). We observed a small ($\approx 5\%$), sustained increase in net nitrogen mineralization in the girdled treatment from 2007 to 2009, and a similarly small, albeit transient, increase in net nitrogen mineralization immediately following logging (Fig. 3f).

DISCUSSION

Losses of individual species can have cascading effects on system-wide biological diversity and ecosystem function, but whether *specific* species have different effects on ecosystem structure function remains an open question that has been addressed much more in theory than in practice (Bunker et al., 2005; Suding et al., 2008; Wardle et al., 2011). It is important to distinguish between effects of loss of dominant (in terms of basal area or biomass) or abundant species and effects of loss of foundation species. For example, American beech is declining rapidly due to beech-bark disease (Houston, 1975; Lovett et al., 2006), but because beech resprouts readily, one consequence of beech-bark disease has been to change the size structure of these forests. Large beech trees are now uncommon, but the number of saplings (sprouts) and even the amount of beech's basal area in a stand may be much greater than before the occurrence and spread of the disease (Houston, 1975). Similarly, American elm, once a co-dominant in many eastern North American forests, continued to recruit from small trees, which can reproduce before they are killed by Dutch elm disease (Barnes, 1976). Understory composition changes rarely in beech stands infested by beech-bark disease (Twery & Patterson, 1984), and several authors have failed to find expected changes in invertebrate or mammal abundance associated with widespread decline in beech nuts formerly produced by large trees (Faison & Houston, 2004; Garneau et al., 2012). Effects of beech decline on energy and nutrient cycling varies with co-occurring hardwoods, rates of resprouting, and intensity of infestation (Lovett et al., 2006).

In contrast, eastern hemlock has distinctive assemblages of understory plants and animals (Snyder et al., 2002; Tingley et al., 2002; Ellison et al., 2005b; Dilling et al., 2007; Mathewson, 2009; Rohr, Mahan & Kim, 2009; Mallis & Rieske, 2011; Sackett et al., 2011), and affects carbon cycling and hydrological processes differently from both co-occurring

hardwoods and co-occurring conifers (Ford & Vose, 2007; Hadley et al., 2008; Brantley, Ford & Vose, 2013). Hemlock, unlike hardwoods, does not resprout, and the hemlock woolly adelgid feeds on all ages and size-classes of hemlock. Thus, there is neither opportunity for rapid regeneration through resprouting nor is there an opportunity for hemlock seedlings to reach maturity and fruit before they are killed by the adelgid. Eastern hemlock, therefore, is a better candidate for a foundation tree species than many other forest dominants. Its decline and death have been hypothesized to lead to both short- and long-term changes in ecological dynamics and ecosystem processes (Ellison et al., 2005a; Lovett et al., 2006).

The Harvard Forest Hemlock Removal Experiment (HF-HeRE) examines this hypothesis by quantifying these changes and testing explicit predictions about how the magnitude and rate of these changes are functions of the mechanism by which a foundation species is lost. In general terms, we predicted that rates of change in biological diversity and ecosystem function would parallel the rate of foundation species loss: slowly when hemlock was girdled (to mimic decline due to infestation by the hemlock woolly adelgid; Yorks, Leopold & Raynal, 2003) but more rapidly when hemlock was cut and removed (to simulate a commercial logging operation; Brooks, 2001). We hypothesize that despite differences in initial rates, changes in vegetation structure and ecosystem function caused by different mechanisms of hemlock loss will converge and come to resemble those seen in the young hardwood stands that represent a plausible scenario of our forests in the future, after hemlock has disappeared from the landscape (Orwig & Foster, 1998). Our results provide strong support for this hypotheses with respect to most measures of vegetation structure, but for fewer measures of ecosystem function.

Changes in vegetation structure

Decline and loss of *T. canadensis* in the logged and girdled plots at HF-HeRE led to changes in overstory densities and basal area (Table 1) that were similar to those seen in sites long infested by the adelgid (Orwig & Foster, 1998; Orwig, Foster & Mausel, 2002) or that have been salvage logged (Brooks, 2001; Kizlinski et al., 2002). Light availability near ground-level increased gradually over time following girdling but abruptly after logging, followed by a decline with regrowth in the logged treatment (Lustenhouwer, Nicoll & Ellison, 2012). Average daily soil and air temperatures in logged and girdled plots were 2–4 °C warmer in summer and cooler in winter relative to the hemlock or hardwood controls, and both diurnal and seasonal variances in temperatures were highest in the logged treatment (Lustenhouwer, Nicoll & Ellison, 2012). Such changes in light and temperature can strongly impact both vegetation community composition (D'Amato, Orwig & Foster, 2009; Farnsworth, Barker Plotkin & Ellison, 2012) and associated ecosystem properties including decomposition (Berg & McClaugherty, 2008), soil respiration (Savage & Davidson, 2001), and nutrient cycling (Kizlinski et al., 2002).

Removal of *T. canadensis* by girdling or logging resulted in a 2- to 3-fold increase in species richness after either treatment. Consistent with our first prediction, understory cover in the girdled treatment plots increased slowly (Figs. 2a, 2b) because overstory trees

died slowly and the majority of snags were still standing and providing partial shade 4–5 years after the canopy manipulation treatment had been applied. We anticipate that understory vegetation in this treatment will continue to increase in cover and species richness. In contrast, understory vegetation cover in the logged treatment plots increased rapidly and matched total cover in the hardwood control plots by 2009 (Figs. 2a, 2b). Shade intolerant species including *Rubus* spp., *Aralia hispida*, and *Carex* spp. initially were absent in all six *T. canadensis*-dominated plots, but established from both the seed bank and the seed rain in soils scarified by logging (Farnsworth, Barker Plotkin & Ellison, 2012) and grew quickly in these scarified areas. Similar increases in total richness and cover have been observed following girdling (Yorks, Leopold & Raynal, 2003; Ford et al., 2012) or salvage logging (Kizlinski et al., 2002; D Orwig, unpublished data) of *T. canadensis* elsewhere. However, the heavy recruitment of birch (*Betula* spp.) into the sapling layer within four years of girdling has not been observed in other girdling studies (Yorks, Leopold & Raynal, 2003; Ford et al., 2012), perhaps due to lower deer browsing and lack of rhododendron (*Rhododendron maximum* L.) cover that limit rapid recruitment south of our study areas. These results overall highlight the fact that healthy hemlock act as an ecological filter, limiting seedling and understory plant establishment (Rogers, 1980; D'Amato, Orwig & Foster, 2009; Orwig et al., 2012). Now that the adelgid has colonized the hemlock control plots, however, they are also poised for change, and will provide important comparisons with responses observed following girdling.

Changes in standing and downed dead wood

Changes in coarse woody debris volume (Figs. 2f, 2g) were consistent with our second prediction. By the end of 2009, most dead trees were still standing in the girdled treatment plots. Once they fall, however, volume of fallen wood will more than double the levels currently found in the logged plots. Ironically, although the hemlock canopy is lost, this large input of CWD onto the soil surface will bring the dead wood structure of this treatment closer to that seen in old-growth *T. canadensis* stand structure (D'Amato, Orwig & Foster, 2008) than to the volume of standing dead wood or CWD in young hardwood stands. These fallen boles likely will provide safe sites for seedling establishment and cover for amphibians (Mathewson, 2009) and, as they decompose, also will slowly release nutrients into the soil.

Changes in ecosystem functions

Our third prediction was supported most clearly for changes in litterfall, an index of aboveground primary productivity (Zheng, Prince & Hame, 2004). In the girdled treatment plots, there was a sharp pulse in litterfall followed by a gradual decline (Figs. 3a, 3b; see also Yorks, Leopold & Raynal, 2003; Nuckolls et al., 2009). This is a transient loss of standing biomass, which then recovered to pretreatment levels as vegetation colonized or regrew in the experimental plots. Total litterfall following girdling recovered within four years to levels observed in both hemlock and hardwood controls as *Pinus strobus*, *Quercus* spp. and *Betula* spp. growth increased. Very similar patterns and total amounts of litterfall were observed four years after girdling hemlock in southern Appalachian forests

(Knoepp *et al.*, 2011). In the logged treatment plots, litterfall immediately decreased following logging then slowly increased. By 2009, however, the amount of litterfall in the logged plots treatment was still lower than in the girdled treatment or either of the two controls (Figs. 3a, 3b).

Contrary to our third prediction, variation in soil respiration, nitrogen availability, and nitrogen cycling generally was higher within treatments and years than among treatments or years, and any responses to treatments were modest and transient. Any initial differences among treatments rapidly recovered to pre-treatment levels (Figs. 3c–3f). Our approximate autotrophic respiration rate estimates of 36%–46% are similar to the 48% measured by Gaudinski *et al.* (2000) at the Harvard Forest using isotopic analysis of respired ^{14}C . We measured 43% autotrophic respiration using the same isotopic analysis methodology as Gaudinski *et al.* (2000) within the Simes girdled treatment plots (K Savage & E Davidson, unpublished data). Similar ranges attributed to autotrophs have been estimated in other studies (Hanson *et al.*, 2000; Levy-Varon, Schuster & Griffin, 2012).

Despite the dramatic changes caused by girdling and logging in microenvironmental conditions (Lustenhouwer, Nicoll & Ellison, 2012), vegetation structure (Fig. 2; Table 2), and productivity (Figs. 3a, 3b; Table 3) and the transient shifts in carbon dynamics (Fig. 3c; Table 3), our experimental treatments resulted in only modest, short-term changes in nitrogen cycling (Figs. 3d–3f; Table 3). Ammonium availability in the girdled treatment plots did not increase until two years after girdling and peaked one year later, a result expected because *T. canadensis* trees did not die or drop their needles immediately. The short-lived duration of nutrient capture on resins is likely related to the rapid regrowth of vegetation in the logging treatment (see also Templer & McCann, 2010). Short-lived increases in ammonium and nitrate availability also have been observed in other logging and girdling studies (Kizlinski *et al.*, 2002; Yorks, Leopold & Raynal, 2003; Nave *et al.*, 2011), and in adelgid-infested forests (Jenkins, Aber & Canham, 1999; Orwig *et al.*, 2008). Net nitrogen mineralization was not significantly affected by logging or girdling, a result also seen other hemlock studies in girdled (Knoepp *et al.*, 2011) and logged stands (Kizlinski *et al.*, 2002), and consistent with findings following a substantial physical disturbance (simulated hurricane; Bowden *et al.*, 1993). However, we also found no substantive differences in nitrogen mineralization between hemlock and hardwood control plots. The lack of major differences in soil pH or forest floor C:N is consistent with these findings, which are also supported by recent meta-analyses (Mueller *et al.*, 2012).

We caution, however, that it may take much longer than a decade or two for changes in soil dynamics resulting from the loss of hemlock to be manifest (DJ Lodge, *personal communication*, 24 September 2004). One of the dominant drivers of soil dynamics – decomposition of large fallen boles and other coarse woody debris – is very different in hemlock (and other conifer-dominated) stands than in hardwood dominated stands. In the former, brown-rot fungi dominate, and they primarily decompose cellulose. In the latter, white-rot fungi dominate, and they primarily decompose lignin; in general,

white-rot fungi are much more efficient (and rapid) decomposers (*Hatakka, 2001; Floudas et al., 2012*). We predict that soil nutrient availability will decline significantly only once dead hemlock boles and smaller coarse hemlock woody debris have decomposed and brown-rot fungi disappear, but this may take one or two centuries.

CONCLUSIONS

Loss of the foundation tree species, *T. canadensis*, by either girdling or logging, leads to short- and long-term changes in vegetation structure and ecosystem function. Rapid removal by logging leads to abrupt, rapid changes, whereas girdling (and by inference, the adelgid itself) causes slower but no less important responses of similar magnitude several years later. Vegetation richness, cover, and density increase continuously following hemlock removal and exert strong, potentially stabilizing, biotic control on the fluxes of nutrients. Thus, these ecosystem processes exhibited short-term fluctuations following *T. canadensis* removal but recovered to near pre-treatment levels within four years, highlighting the resilience – at least in the short-term – of some forest ecosystem processes to disturbances (*Bowden et al., 1993; Foster et al., 1997*). Results from HF-HeRE, together with results from observations and experiments on other foundation species suggest that their continued losses, together with human responses to ongoing environmental changes, may have profound impacts on the structure and function of forested ecosystems for decades to come.

ACKNOWLEDGEMENTS

Mackenzie Bennett, Peter Bettman-Kerson, Charlie Boyd, Naomi Clark, David Franklin, Clarisse Hart, Sultana Jefts, Susan Irizarry, Alanna Kassarian, Bennet Leon, Natalie Levy, Samantha Marshall, Nicole Mercier, Jan Ng, Amanda Parks, Samantha Petit, Haley Smith, Relena Ribbons, Christy Rollinson, Ernesto Rodríguez, Tawny Virgilio, Kelly Walton, Matt Waterhouse, and Kristin Williams assisted in the field work. Elizabeth Farnsworth, David Foster, two anonymous reviewers, and academic editor Michael Huston provided helpful comments on early versions of the manuscript.

ADDITIONAL INFORMATION AND DECLARATIONS

Funding

This research was supported by the US National Science Foundation through its programs in Long Term Ecological Research (DEB 06-20443), Ecosystems Research (DEB 02-36897), and Research Experiences for Undergraduates (DBI 04-52254), and by the US Department of Energy's Office of Science through its Northeast Regional Center of the National Institute for Global Environmental Change under cooperative agreement no. DE-FC02-03ER63613. The funders had no role in study design, data collection and analysis, decision to publish, or preparation of the manuscript.

Grant Disclosures

The following grant information was disclosed by the authors:

US NSF: 06-20443, 02-36897, 04-52254.

US DOE: DE-FC02-03-ER63613, DE-FC-02-06-ER64157.

Competing Interests

AM Ellison is an Academic Editor for PeerJ.

Author Contributions

- David A. Orwig, Audrey A. Barker Plotkin and Kathleen E. Savage conceived and designed the experiments, performed the experiments, analyzed the data, contributed reagents/materials/analysis tools, wrote the paper.
- Eric A. Davidson conceived and designed the experiments, analyzed the data, wrote the paper.
- Heidi Lux performed the experiments, contributed reagents/materials/analysis tools, wrote the paper.
- Aaron M. Ellison conceived and designed the experiments, performed the experiments, analyzed the data, wrote the paper.

Field Study Permissions

The following information was supplied relating to ethical approvals (i.e. approving body and any reference numbers):

Permit to work in wetlands and/or bordering vegetated wetlands (applies only to Plot 1 of the experiment) issued by the Petersham Conservation Commission. In a letter dated 14 June 2005, the Chairman of the Petersham Conservation Commission, Robert A. Clark, wrote: “the wetlands will not be disturbed other than the dynamics of changes in tree species and that the study will not negatively alter the wetlands. The Commission agreed that the filing of a Notice of Intent is not required.”

Data Deposition

The following information was supplied regarding the deposition of related data:

All data presented in this paper are publicly available through the Harvard Forest Data Archive (<http://harvardforest.fas.harvard.edu/data-archive>), in a suite of datasets: HF106 (understory vegetation), HF126 (overstory vegetation), HF161 (litterfall), HF125 (coarse woody debris), HF119 and HF130 (soil respiration), and HF179 (nitrogen pools and dynamics).

REFERENCES

- Aber JD, Melillo JM. 1991. *Terrestrial ecosystems*. Philadelphia: Saunders College Publishing.
- Aber JD, Magill A, Boone R, Melillo JM, Steudler P, Bowden R. 1993. Plant and soil responses to chronic nitrogen additions at the Harvard Forest Massachusetts. *Ecological Applications* 3:156–166 DOI 10.2307/1941798.

- Albani M, Moorcroft PR, Ellison AM, Orwig DA, Foster DR. 2010. Predicting the impact of hemlock woolly adelgid on carbon dynamics of eastern US forests. *Canadian Journal of Forest Research* 40:119–133 DOI 10.1139/X09-167.
- Anderson P, Brundrett M, Grierson P, Robinson R. 2010. Impact of severe forest dieback caused by *Phytophthora cinnamomi* on macrofungal diversity in the northern Jarrah forest of Western Australia. *Forest Ecology and Management* 259:1033–1040 DOI 10.1016/j.foreco.2009.12.015.
- Aukema JE, Leung B, Kovacs K, Chivers C, Britton KO, Englin J, Frankel SJ, Haight RG, Holmes TP, Liebhold AM, McCullough DG, Von Holle B. 2011. Economic impacts of non-native insects in the continental United States. *PLoS ONE* 6:e24587 DOI 10.1371/journal.pone.0024587.
- Barbier EB, Hacker SD, Kennedy C, Koch EW, Stier AC, Silliman BR. 2011. The value of estuarine and coastal ecosystem services. *Ecological Monographs* 81:169–193 DOI 10.1890/10-1510.1.
- Barnes BV. 1976. Succession in deciduous swamp communities of southeastern Michigan formerly dominated by American elm. *Canadian Journal of Botany* 54:19–24 DOI 10.1139/b76-004.
- Berg B, McLaugherty C. 2008. *Plant litter decomposition, humus formation, carbon sequestration*, 2nd edition, Berlin: Springer-Verlag.
- Bettmann-Kerson P. 2007. Hemlock removal experiment – dendrochronological record. Harvard Forest Data Archive HF-086. Available at <http://harvardforest.fas.harvard.edu:8080/exist/xquery/data.xq?id=hf086> (accessed 24 October 2012).
- Binkley D, Matson P. 1983. Ion exchange resin bag method for assessing forest soil nitrogen availability. *Soil Science Society of America Journal* 47:1050–1052 DOI 10.2136/sssaj1983.03615995004700050045x.
- Bowden RD, Castro MS, Melillo JM, Steudler PA, Aber JD. 1993. Fluxes of greenhouse gases between soils and the atmosphere in a temperate forest following a simulated hurricane blowdown. *Biogeochemistry* 21:61–71 DOI 10.1007/BF00000871.
- Brantley ST, Ford CR, Vose JM. 2013. Future species composition will affect forest water use after loss of eastern hemlock from southern Appalachian forests. *Ecological Applications* 94: DOI 10.1890/12-0616.1.
- Bridgeland WT, Beier P, Kolb T, Whitham TG. 2010. A conditional trophic cascade: birds benefit faster growing trees with strong links between predators and plants. *Ecology* 91:73–84 DOI 10.1890/08-1821.1.
- Brooks RT. 2001. Effects of the removal of overstory hemlock from hemlock-dominated forests on eastern redback salamanders. *Forest Ecology and Management* 149:197–204 DOI 10.1016/S0378-1127(00)00553-3.
- Bunker DE, DeClerck F, Bradford JC, Colwell RK, Perfecto I, Phillips OL, Sankaran M, Naeem S. 2005. Species loss and aboveground carbon storage in a tropical forest. *Science* 310:1029–1031 DOI 10.1126/science.1117682.
- Cai YF, Barber P, Dell B, O'Brien P, Williams N, Bowen B, Hardy G. 2010. Soil bacterial functional diversity is associated with the decline of *Eucalyptus gomphocephala*. *Forest Ecology and Management* 260:1047–1057 DOI 10.1016/j.foreco.2010.06.029.
- Cardinale BJ, Duffy JE, Gonzalez A, Hooper DU, Perrings C, Venail P, Narwani A, Mace GM, Tilman D, Wardle DA, Kinzig AP, Daily GC, Loreau M, Grace JB, Larigauderie A, Srivastava DS, Naeem S. 2012. Biodiversity loss and its impact on humanity. *Nature* 486:59–67 DOI 10.1038/nature11148.

- Cobb RS, Orwig DA, Currie S. 2006.** Decomposition of green foliage in eastern hemlock forests of southern New England impacted by hemlock woolly adelgid populations. *Canadian Journal of Forest Research* **36**:1–11 DOI [10.1139/x06-012](https://doi.org/10.1139/x06-012).
- Cowles RS. 2009.** Optimizing dosage and preventing leaching of imidacloprid for management of hemlock woolly adelgid in forests. *Forest Ecology and Management* **257**:1026–1033 DOI [10.1016/j.foreco.2008.11.005](https://doi.org/10.1016/j.foreco.2008.11.005).
- D’Amato AW, Orwig DA, Foster DR. 2008.** The influence of successional processes and disturbance on the structure of *Tsuga canadensis* forests. *Ecological Applications* **18**:1182–1199 DOI [10.1890/07-0919.1](https://doi.org/10.1890/07-0919.1).
- D’Amato AW, Orwig DA, Foster DR. 2009.** Understory vegetation in old-growth and second-growth *Tsuga canadensis* forests in western Massachusetts. *Forest Ecology and Management* **257**:1043–1052 DOI [10.1016/j.foreco.2008.11.003](https://doi.org/10.1016/j.foreco.2008.11.003).
- Dilling C, Lambdin P, Grant J, Buck L. 2007.** Insect guild structure associated with eastern hemlock in the southern Appalachians. *Environmental Entomology* **36**:1408–1414 DOI [10.1603/0046-225X\(2007\)36\[1408:IGSAWE\]2.o.CO;2](https://doi.org/10.1603/0046-225X(2007)36[1408:IGSAWE]2.o.CO;2).
- Ellison AM, Bank MS, Clinton BD, Colburn EA, Elliott K, Ford CR, Foster DR, Kloeppel BD, Knoepp JD, Lovett GM, Mohan J, Orwig DA, Rodenhouse NL, Sobczak WV, Stinson KA, Stone JK, Swan CM, Thompson J, Von Holle B, Webster JR. 2005a.** Loss of foundation species: consequences for the structure and dynamics of forested ecosystems. *Frontiers in Ecology and the Environment* **3**:479–486 DOI [10.1890/1540-9295\(2005\)003\[0479:LOFSCF\]2.o.CO;2](https://doi.org/10.1890/1540-9295(2005)003[0479:LOFSCF]2.o.CO;2).
- Ellison AM, Chen J, Díaz D, Kammerer-Burnham C, Lau M. 2005b.** Changes in ant community structure and composition associated with hemlock decline in New England. In: Onken B, Reardon R, eds. *Proceedings of the 3rd symposium on hemlock woolly adelgid in the eastern United States*. Morgantown: US Forest Service – Forest Health Technology Enterprise Team, 280–289.
- Ellison AM, Barker Plotkin AA, Foster DR, Orwig DA. 2010.** Experimentally testing the role of foundation species in forests: the Harvard Forest Hemlock Removal Experiment. *Methods in Ecology and Evolution* **1**:168–179 DOI [10.1111/j.2041-210X.2010.00025.x](https://doi.org/10.1111/j.2041-210X.2010.00025.x).
- Eschtruth AK, Cleavitt NL, Battles JJ, Evans RA, Fahey TJ. 2006.** Vegetation dynamics in declining eastern hemlock stands: nine years of forests response to hemlock woolly adelgid infestation. *Canadian Journal of Forest Research* **36**:1435–1450 DOI [10.1139/x06-050](https://doi.org/10.1139/x06-050).
- Faison EK, Houston DR. 2004.** Black bear foraging in response to beech bark disease in northern Vermont. *Northeastern Naturalist* **11**:387–394 DOI [10.1656/1092-6194\(2004\)011\[0387:BBFIRT\]2.o.CO;2](https://doi.org/10.1656/1092-6194(2004)011[0387:BBFIRT]2.o.CO;2).
- Farnsworth EJ, Barker Plotkin A, Ellison AM. 2012.** Seed bank, seed rain, and vegetation dynamics in *Tsuga canadensis* stands: reorganization of forests after foundation species loss due to logging or simulated attack of *Adelges tsugae*. *Canadian Journal of Forest Research* **42**:2090–2105 DOI [10.1139/cjfr-2012-0305](https://doi.org/10.1139/cjfr-2012-0305).
- Fitzpatrick MC, Preisser EL, Porter A, Elkinton J, Ellison AM. 2012.** Modeling range dynamics in heterogeneous landscapes: invasion of the hemlock woolly adelgid in eastern North America. *Ecological Applications* **22**:472–486 DOI [10.1890/11-0009.1](https://doi.org/10.1890/11-0009.1).
- Floudas D, Binder M, Riley R, Barry K, Blanchette RA, Henrissat B, Martínez AT, Otilar R, Spatafora JW, Yadav JS, Aerts A, Benoit I, Boyd A, Carlson A, Copeland A, Coutinho PM, de Vries RP, Ferreira P, Findley K, Foster B, Gaskell J, Glotzer D, Górecki P, Heitman J, Hesse C, Hori C, Igarashi K, Jurgens JA, Kallen N, Kersten P, Kohler A, Kues U, Kumar TKA, Kuo A, LaButti K, Larrondo LF, Lindquist E, Ling A, Lombard V, Lucas S, Lundell T, Martin R, McLaughlin DJ, Morgenstern I, Morin E, Murat C, Nagy LG, Nolan M, Ohm RA,**

- Patyshakuliyeva A, Rokas A, Ruiz-Dueñas FJ, Sabat G, Salamov A, Samejima M, Schmutz J, Slot JC, St John F, Stenlid J, Sun H, Sun S, Syed K, Tsang A, Wiebenga A, Young D, Pisabarro A, Eastwood DC, Martin F, Cullen D, Grigoriev IV, Hibbett DS. 2012. The Paleozoic origin of enzymatic lignin decomposition reconstructed from 31 fungal genomes. *Science* 336:1715–1719 DOI 10.1126/science.1221748.
- Ford CR, Vose JM. 2007. *Tsuga canadensis* (L.) Carr. mortality will impact hydrological processes in southern Appalachian forest ecosystems. *Ecological Applications* 17:1156–1167 DOI 10.1890/06-0027.
- Ford CR, Elliott KJ, Clinton BD, Kloepfel BD, Vose JM. 2012. Forest dynamics following eastern hemlock mortality in the southern Appalachians. *Oikos* 121:523–536 DOI 10.1111/j.1600-0706.2011.19622.x.
- Foster DR, Orwig DA. 2006. Pre-emptive and salvage harvesting of New England forests: when doing nothing is a viable alternative. *Conservation Biology* 20:959–970 DOI 10.1111/j.1523-1739.2006.00495.x.
- Foster DR, Aber JD, Melillo JM, Bowden RD, Bazazz FA. 1997. Forest response to disturbance and anthropogenic stress. *BioScience* 47:437–445 DOI 10.2307/1313059.
- Garneau DE, Lawler ME, Rumpf AS, Weyburne ES, Cuppernull TM, Boe AG. 2012. Potential effects of beech bark disease on small mammals and invertebrates in northeastern US forests. *Northeastern Naturalist* 19:391–410 DOI 10.1656/045.019.0303.
- Gaston KJ. 2010. Valuing common species. *Science* 327:154–155 DOI 10.1126/science.1182818.
- Gaudinski JB, Trumbore SE, Davidson EA, Zheng S. 2000. Soil carbon cycling in a temperate forest: radiocarbon-based estimates of residence times sequestration rates and partitioning fluxes. *Biogeochemistry* 51:33–69 DOI 10.1023/A:1006301010014.
- Gotelli NJ, Ellison AM. 2012. *A primer of ecological statistics*, 2nd edition, Sunderland: Sinauer Associates.
- Hadley JL, Kuzeja PS, Daley MJ, Phillips NG, Mulcahy T, Singh S. 2008. Water use and carbon exchange of red oak- and eastern hemlock-dominated forests in the northeastern USA: implications for ecosystem-level effects of hemlock woolly adelgid. *Tree Physiology* 28:615–627 DOI 10.1093/treephys/28.4.615.
- Haines A. 2011. *Flora Novae Angliae: a manual for the identification of native and naturalized higher vascular plants of New England*. New Haven: Yale University Press.
- Hanson PJ, Edwards NT, Garten CT, Andrews JA. 2000. Separating root and soil microbial contributions to soil respiration: a review of methods and observations. *Biogeochemistry* 48:115–146 DOI 10.1023/A:1006244819642.
- Harmon ME, Sexton J. 1996. Guidelines for measurements of woody detritus in forest ecosystems Seattle: US Long-term Ecological Research Network Office, publication number 20.
- Hart SC, Stark JM, Davidson EA, Firestone MF. 1994. Nitrogen mineralization immobilization and nitrification. In: Weaver RW, Angle S, Bottomley P, Dezdicek D, Smith S, Tabatabai A, Wollum, eds. *Methods of soil analysis, part 2: microbial and biochemical properties*. Madison: Soil Science Society of America, Inc., 985–1018.
- Hatakka A. 2001. Biodegradation of lignin. In: Hofrichter M, Steinbüchel A, eds. *Biopolymers. Biology, chemistry, biotechnology, applications. Volume 1. Lignin, humic substances and coal*. Weinheim: Wiley-VCH, 129–180.
- Hicke JA, Allen CD, Desai AR, Dietze MC, Hall RJ, Hogg EH, Kashian DM, Moore D, Raffa KF, Sturrock RN, Vogelmann J. 2012. Effects of biotic disturbances on forest carbon cycling in the United States and Canada. *Global Change Biology* 18:7–34 DOI 10.1111/j.1365-2486.2011.02543.x.

- Hooper DU, Adair EC, Cardinale BJ, Byrnes JEK, Hungate BA, Matulich KL, Gonzalez A, Duffy JE, Gamfeldt L, O'Connor MI. 2012.** A global synthesis reveals biodiversity loss as a major driver of ecosystem change. *Nature* **486**:105–108.
- Houston DR. 1975.** Beech bark disease: the aftermath forests are structured for a new outbreak. *Journal of Forestry* **73**:660–673.
- Hueneke LF. 1983.** Understory response to gaps caused by the death of *Ulmus americana* in central New York. *Bulletin of the Torrey Botanical Club* **110**:170–175 DOI [10.2307/2996338](https://doi.org/10.2307/2996338).
- Ingwell LL, Preisser EL. 2011.** Using citizen science programs to identify host resistance in pest-invaded forests. *Conservation Biology* **25**:182–188 DOI [10.1111/j.1523-1739.2010.01567.x](https://doi.org/10.1111/j.1523-1739.2010.01567.x).
- Jenkins JC, Aber JD, Canham CD. 1999.** Hemlock woolly adelgid impacts on community structure and N cycling rates in eastern hemlock forests. *Canadian Journal of Forest Research* **29**:630–645 DOI [10.1139/x99-034](https://doi.org/10.1139/x99-034).
- Kendall KC, Keane RE. 2001.** Whitebark pine decline: infection mortality and population trends. In: Tomback DF, Arno SF, Keane RE, eds. *Whitebark pine communities ecology and restoration*. Washington, DC: Island Press, 221–242.
- Kizlinski ML, Orwig DA, Cobb RC, Foster DR. 2002.** Direct and Indirect ecosystem consequences of an invasive pest on forests dominated by eastern hemlock. *Journal of Biogeography* **29**:1489–1503 DOI [10.1046/j.1365-2699.2002.00766.x](https://doi.org/10.1046/j.1365-2699.2002.00766.x).
- Knoepp JD, Vose JM, Clinton BD, Hunter MD. 2011.** Hemlock infestation and mortality: impacts on nutrient pools and cycling in Appalachian forests. *Soil Science Society of America Journal* **75**:1935–1945 DOI [10.2136/sssaj2010.0409](https://doi.org/10.2136/sssaj2010.0409).
- Lachat Instruments Inc. 1990a.** *QuickChem method No 10-107-06-1-C*. Milwaukee: Lachat.
- Lachat Instruments Inc. 1990b.** *QuickChem method No 10-107-04-1-A*. Milwaukee: Lachat.
- Levy-Varon JH, Schuster WSF, Griffin KL. 2012.** The autotrophic contribution to soil respiration in a northern temperate deciduous forest and its response to stand disturbance. *Oecologia* **169**:211–220 DOI [10.1007/s00442-011-2182-y](https://doi.org/10.1007/s00442-011-2182-y).
- Livingston GP, Hutchinson GL. 1995.** Enclosure-based measurement of trace gas exchange: applications and sources of error. In: Matson PA, Harriss RC, eds. *Biogenic trace gases: measuring emissions from soil and water*. Blackwell: Oxford, 14–51.
- Lovett GM, Canham CD, Arthur MA, Weathers KC, Fitzhugh RD. 2006.** Forest ecosystem responses to exotic pests and pathogens in eastern North America. *BioScience* **56**:395–405 DOI [10.1641/0006-3568\(2006\)056\[0395:FERTEP\]2.0.CO;2](https://doi.org/10.1641/0006-3568(2006)056[0395:FERTEP]2.0.CO;2).
- Lustenhouwer MN, Nicoll L, Ellison AM. 2012.** Microclimatic effects of the loss of a foundation species from New England forests. *Ecosphere* **3**:26 DOI [10.1890/ES12-00019.1](https://doi.org/10.1890/ES12-00019.1).
- Mallis RE, Rieske LK. 2011.** Arboreal spiders in eastern hemlock. *Environmental Entomology* **40**:1378–1387 DOI [10.1603/EN10278](https://doi.org/10.1603/EN10278).
- Mathewson B. 2009.** The relative abundance of eastern red-backed salamanders in eastern hemlock-dominated and mixed deciduous forests at Harvard Forest. *Northeastern Naturalist* **16**:1–12 DOI [10.1656/045.016.0101](https://doi.org/10.1656/045.016.0101).
- McBride J. 1973.** Natural replacement of disease-killed elms. *American Midland Naturalist* **90**:300–306 DOI [10.2307/2424454](https://doi.org/10.2307/2424454).
- McClure MS. 1995.** Managing hemlock woolly adelgid in ornamental landscapes. *Bulletin of the Connecticut Agricultural Experiment Station* **925**.

- Mueller KE, Hobbie SE, Oleksyn J, Reich PB, Eissenstat DM. 2012. Do evergreen and deciduous trees have different effects on net N mineralization in soil? *Ecology* **93**:1463–1472 DOI [10.1890/11-1906.1](https://doi.org/10.1890/11-1906.1).
- Myers BR, Walck JL, Blum KE. 2004. Vegetation change in a former chestnut stand on the Cumberland Plateau of Tennessee during an 80-year period (1921–2000). *Castanea* **69**:81–91 DOI [10.2179/0008-7475\(2004\)069<0081:VCIAFC>2.0.CO;2](https://doi.org/10.2179/0008-7475(2004)069<0081:VCIAFC>2.0.CO;2).
- Naeem S, Duffy JE, Zavaleta E. 2012. The functions of biological diversity in an age of extinction. *Science* **336**:1401–1406 DOI [10.1126/science.1215855](https://doi.org/10.1126/science.1215855).
- Nagelkerken I, Blaber SJM, Bouillon S, Green P, Haywood M, Kirton LG, Meynecke JO, Pawlik J, Penrose HM, Sasekumar A, Somerfield PJ. 2008. The habitat function of mangroves for terrestrial and marine fauna: a review. *Aquatic Botany* **89**:155–185 DOI [10.1016/j.aquabot.2007.12.007](https://doi.org/10.1016/j.aquabot.2007.12.007).
- Nave LE, Gough CM, Maurer KD, Bohrer G, Hardiman BS, Le Moine J, Munoz AB, Nadelhoffer KJ, Sparks JP, Strahm BD, Vogel CS, Curtis PS. 2011. Disturbance and the resilience of coupled carbon and nitrogen cycling in a north temperate forest. *Journal of Geophysical Research* **116**:G04016 DOI [10.1029/2011JG001758](https://doi.org/10.1029/2011JG001758).
- Nuckolls AE, Wurzburger N, Ford CR, Hendrick RL, Vose JM, Kloeppel BD. 2009. Hemlock declines rapidly with hemlock woolly adelgid infestation: impacts on the carbon cycle of southern Appalachian forests. *Ecosystems* **12**:179–190 DOI [10.1007/s10021-008-9215-3](https://doi.org/10.1007/s10021-008-9215-3).
- Onken B, Reardon R. 2011. *Implementation and status of biological control of the hemlock woolly adelgid*. Morgantown: US Forest Service, Publication FHTET-2011-04.
- Orwig DA, Foster DR. 1998. Forest response to the introduced hemlock woolly adelgid in southern New England, USA. *Journal of the Torrey Botanical Society* **125**:59–72.
- Orwig DA, Foster DR, Mausel DL. 2002. Landscape patterns of hemlock decline in New England due to the introduced hemlock woolly adelgid. *Journal of Biogeography* **29**:1475–1487 DOI [10.1046/j.1365-2699.2002.00765.x](https://doi.org/10.1046/j.1365-2699.2002.00765.x).
- Orwig DA, Cobb RC, D'Amato AW, Kizlinski ML, Foster DR. 2008. Multi-year ecosystem response to hemlock woolly adelgid infestation in southern New England forests. *Canadian Journal of Forest Research* **38**:834–843 DOI [10.1139/X07-196](https://doi.org/10.1139/X07-196).
- Orwig DA, Thompson J, Povak NA, Manner M, Niebyl D, Foster DR. 2012. A foundation tree at the precipice: eastern hemlock health following the arrival of *Adelges tsugae* in central New England. *Ecosphere* **3**:10 DOI [10.1890/ES11-0277.1](https://doi.org/10.1890/ES11-0277.1).
- Pinheiro J, Bates D, DebRoy S, Sarkar D, R Development Core Team. 2012. nlme: linear and nonlinear mixed effects models. R package version 3.1-104. Available at <http://cran.r-project.org/web/packages/nlme/> (accessed 1 July 2012).
- R Development Core Team. 2009. R: a language and environment for statistical computing. Vienna: R Foundation for Statistical Computing.
- Rice AH, Pyle EH, Saleska SR, Huttyra L, Palace M, Keller M, DeCamargo PB, Portilho K, Marques DF, Wofsy SC. 2004. Carbon balance and vegetation dynamics in an old-growth Amazonian forest. *Ecological Applications* **14**:S55–S71 DOI [10.1890/02-6006](https://doi.org/10.1890/02-6006).
- Roberston GP, Wedin D, Groffman PM, Blair JM, Holland EA, Nadelhoffer KJ, Harris D. 1999. Soil carbon and nitrogen availability: nitrogen mineralization nitrification and soil respiration potentials. In: Robertson GP, Coleman DC, Bledsoe CS, Sollins P, eds. *Standard soil methods for long-term ecological research*. New York: Oxford University Press, 258–288.
- Rogers RS. 1980. Hemlock stands from Wisconsin to Nova Scotia: transitions in understory composition along a floristic gradient. *Ecology* **61**:178–193 DOI [10.2307/1937167](https://doi.org/10.2307/1937167).

- Rohr JR, Mahan CG, Kim KC. 2009. Response of arthropod biodiversity to foundation species declines: the case of the eastern hemlock. *Forest Ecology and Management* 258:1503–1510 DOI 10.1016/j.foreco.2009.07.002.
- Sackett TE, Record S, Bewick S, Baiser B, Sanders NJ, Ellison AM. 2011. Response of macroarthropod assemblages to the loss of hemlock (*Tsuga canadensis*), a foundation species. *Ecosphere* 2:74 DOI 10.1890/ES11-00155.1.
- Savage KE, Davidson EA. 2001. Interannual variation of soil respiration in two New England forests. *Global Biogeochemical Cycles* 15:337–350 DOI 10.1029/1999GB001248.
- Smith WB, Miles PD, Perry CH, Pugh SA. 2009. Forest resources of the United States, 2007. General Technical Report WO-78 Washington DC: USDA Forest Service.
- Snyder CD, Young JA, Lemarie DP, Smith DR. 2002. Influence of eastern hemlock forests on aquatic invertebrate assemblages in headwater streams. *Canadian Journal of Fisheries and Aquatic Sciences* 59:262–275 DOI 10.1139/f02-003.
- Soil Survey Staff, Natural Resources Conservation Service, United States Department of Agriculture. Official Soil Series Descriptions. Available online at <http://soils.usda.gov/technical/classification/osd/index.html>. (accessed 1 July 2010).
- Stadler B, Müller T, Orwig D, Cobb R. 2005. Hemlock woolly adelgid in New England forests: canopy impacts transforming ecosystem processes and landscapes. *Ecosystems* 8:233–247 DOI 10.1007/s10021-003-0092-5.
- Stadler B, Müller T, Orwig D. 2006. The ecology of energy and nutrient fluxes in hemlock forests invaded by the hemlock woolly adelgid. *Ecology* 87:1792–1804 DOI 10.1890/0012-9658(2006)87[1792:TEOEAN]2.o.CO;2.
- Suding KN, Lavorel S, Chapin FS III, Cornelissen JHC, Díaz S, Garnier E, Goldberg D, Hooper DU, Jackson ST, Navas M-L. 2008. Scaling environmental change through the community-level: a trait-based response-and-effect framework for plants. *Global Change Biology* 14:1125–1140 DOI 10.1111/j.1365-2486.2008.01557.x.
- Sullivan KA, Ellison AM. 2006. The seed bank of hemlock forests: implications for forest regeneration following hemlock decline. *Journal of the Torrey Botanical Society* 133:393–402 DOI 10.3159/1095-5674(2006)133[393:TSBOHF]2.o.CO;2.
- Templer PH, McCann TM. 2010. Effects of the hemlock woolly adelgid on nitrogen losses from urban and rural northern forest ecosystems. *Ecosystems* 13:1215–1226 DOI 10.1007/s10021-010-9382-x.
- Tingley MW, Orwig DA, Motzkin G, Foster DR, Field R. 2002. Avian response to removal of a forest dominant: consequences of hemlock woolly adelgid infestations. *Journal of Biogeography* 29:1505–1516 DOI 10.1046/j.1365-2699.2002.00789.x.
- Tomback DF, Achuff P. 2010. Blister rust and western forest biodiversity: ecology, values and outlook for white pines. *Forest Pathology* 40:186–225 DOI 10.1111/j.1439-0329.2010.00655.x.
- Twery MJ, Patterson WA III. 1984. Variations in beech bark disease and its effects on species composition and structure of northern hardwood stands in central New England. *Canadian Journal of Forest Research* 14:565–574 DOI 10.1139/x84-104.
- Van Wagner CE. 1968. The line intersect method in forest fuel sampling. *Forest Science* 14:20–26.
- Ward JS, Montgomery ME, Cheah CAS-J, Onken BP, Cowles RS. 2004. *Eastern hemlock forests: guidelines to minimize the impacts of hemlock woolly adelgid*. Morgantown: USDA Forest Service Northeastern Area State and Private Forestry, publication NA-TP-03-04.
- Wardle DA, Bardgett RD, Callaway RM, Van der Putten WH. 2011. Terrestrial ecosystem responses to species gains and losses. *Science* 332:1273–1277 DOI 10.1126/science.1197479.

- Wills RT. 1993.** The ecological impact of *Phytophthora cinnamomi* in the Stirling Range National Park, Western Australia. *Australian Journal of Ecology* **18**:145–159 DOI [10.1111/j.1442-9993.1993.tb00439.x](https://doi.org/10.1111/j.1442-9993.1993.tb00439.x).
- Yorks TE, Leopold DJ, Raynal DJ. 2003.** Effects of *Tsuga canadensis* mortality on soil water chemistry and understory vegetation: possible consequences of an invasive insect herbivore. *Canadian Journal of Forest Research* **33**:1525–1537 DOI [10.1139/x03-073](https://doi.org/10.1139/x03-073).
- Zheng D, Prince S, Hame T. 2004.** Estimating net primary production of boreal forests in Finland and Sweden from field data and remote sensing. *Journal of Vegetation Science* **15**:161–170 DOI [10.1111/j.1654-1103.2004.tb02251.x](https://doi.org/10.1111/j.1654-1103.2004.tb02251.x).