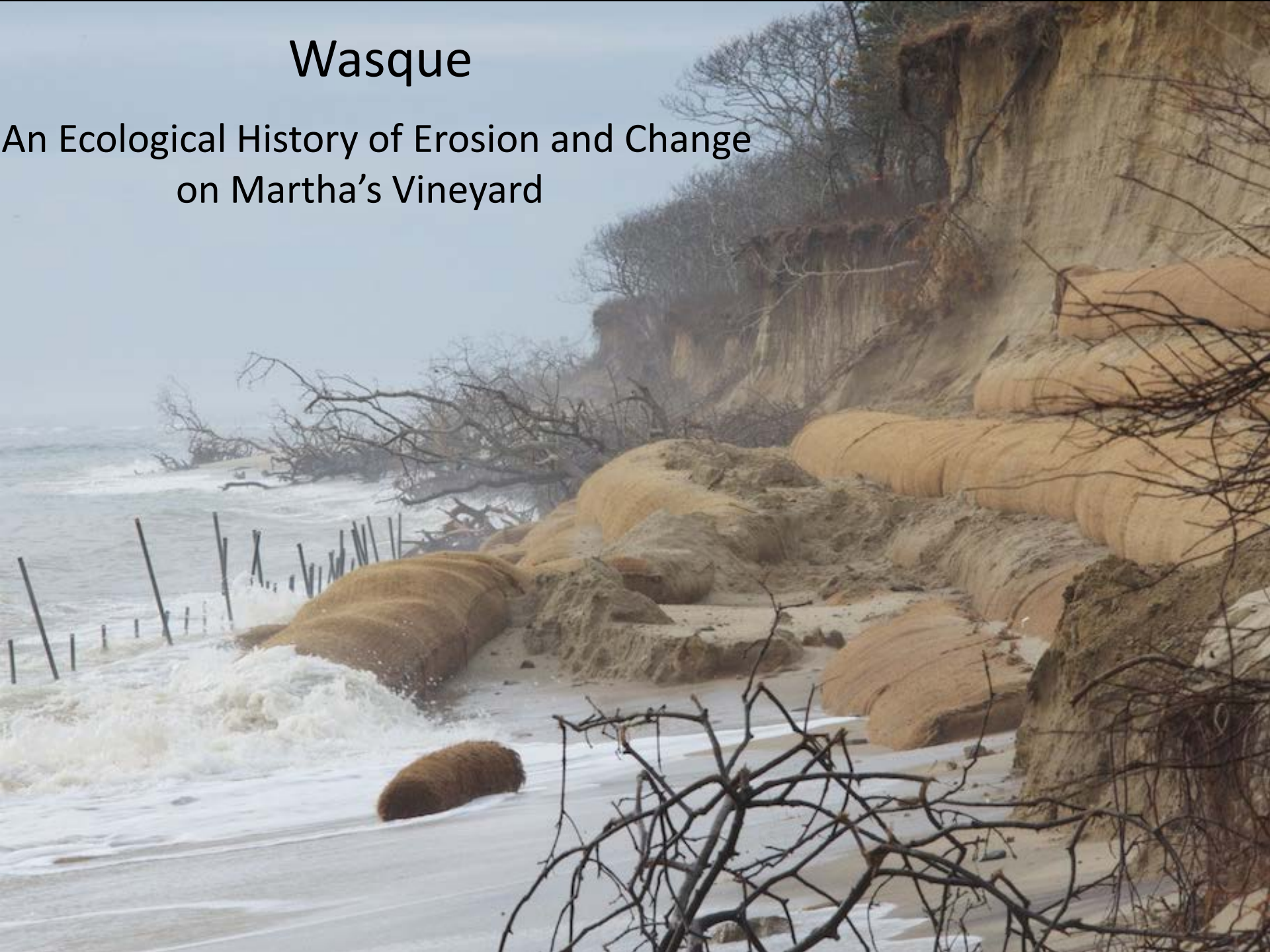


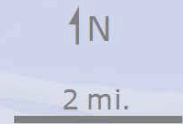
# Wasque

An Ecological History of Erosion and Change  
on Martha's Vineyard



# Harvard Forest Research Sites

TTOR



- Tree Age Site
- Paleo Pond
- Vegetation Plot
- Protected Open Space With Public Access

Protected Open Space Data From MVC



















2009



Wack House

TTOR Beach Access Road











**DANGER**

Road WASHOUT  
STOP!!  
UNSTABLE CLIFF AHEAD

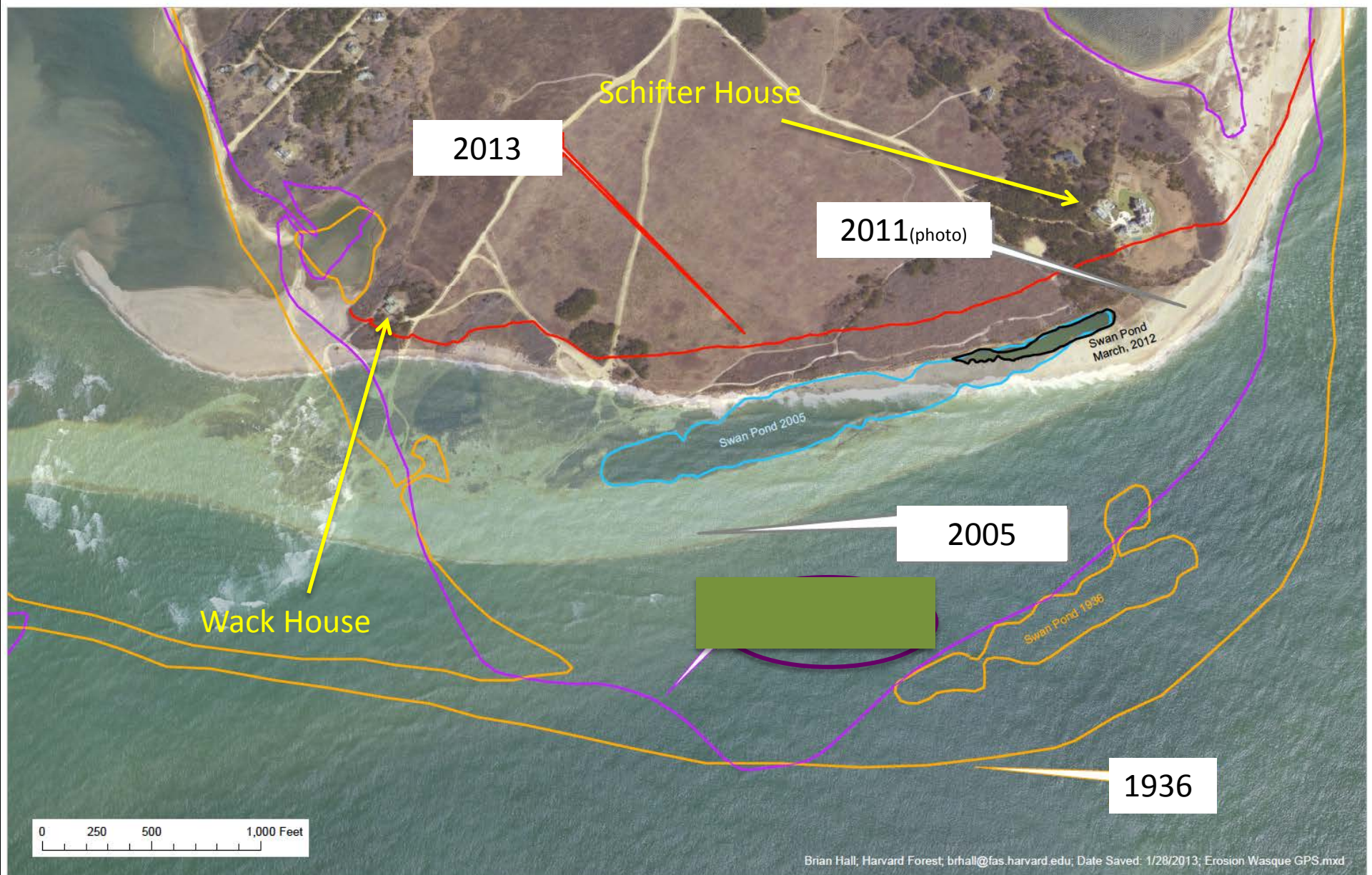
Landesamt für Natur und Umwelt  
des Saarlandes  
Postfach 15 01 50  
66123 Saarbrücken





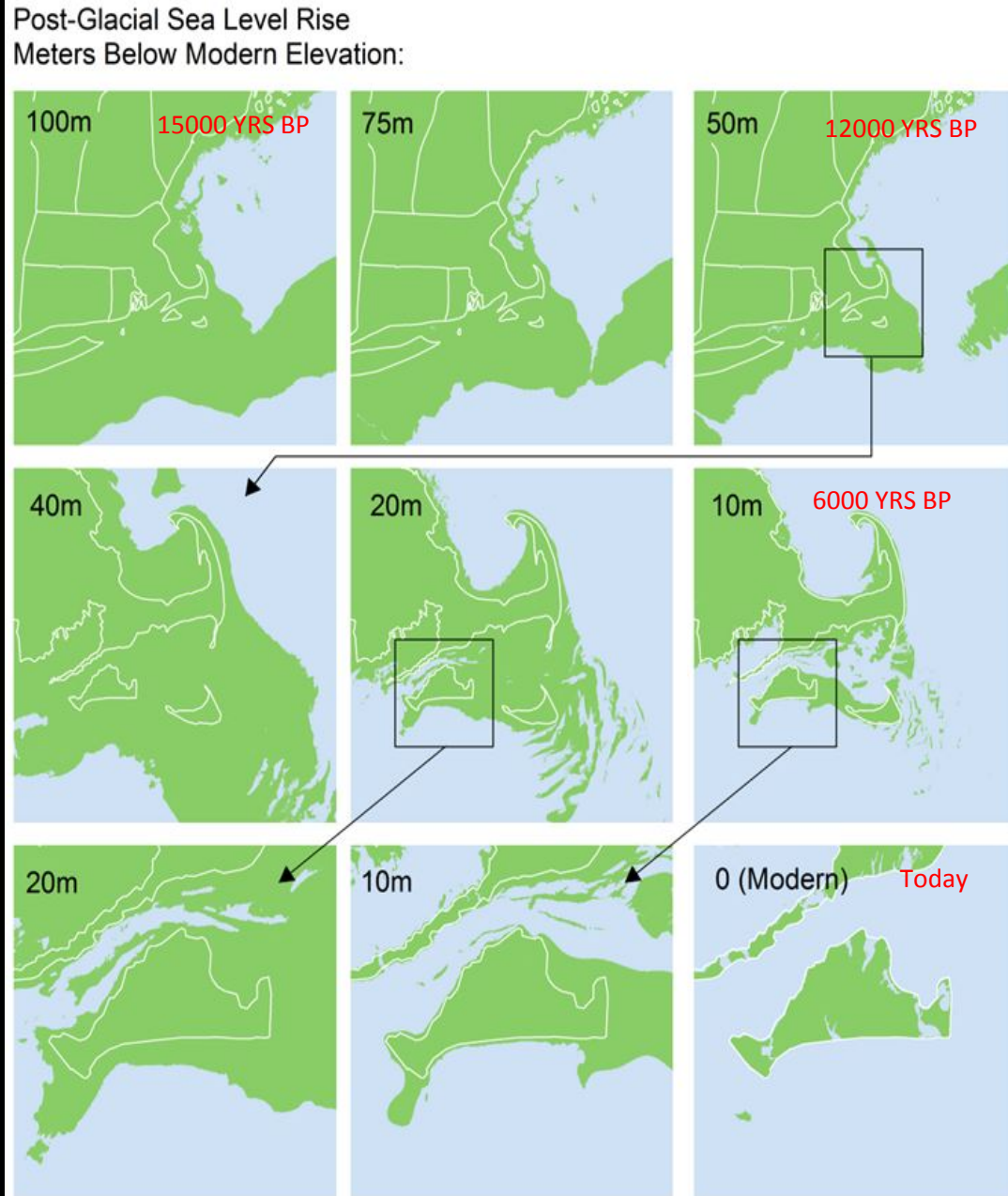








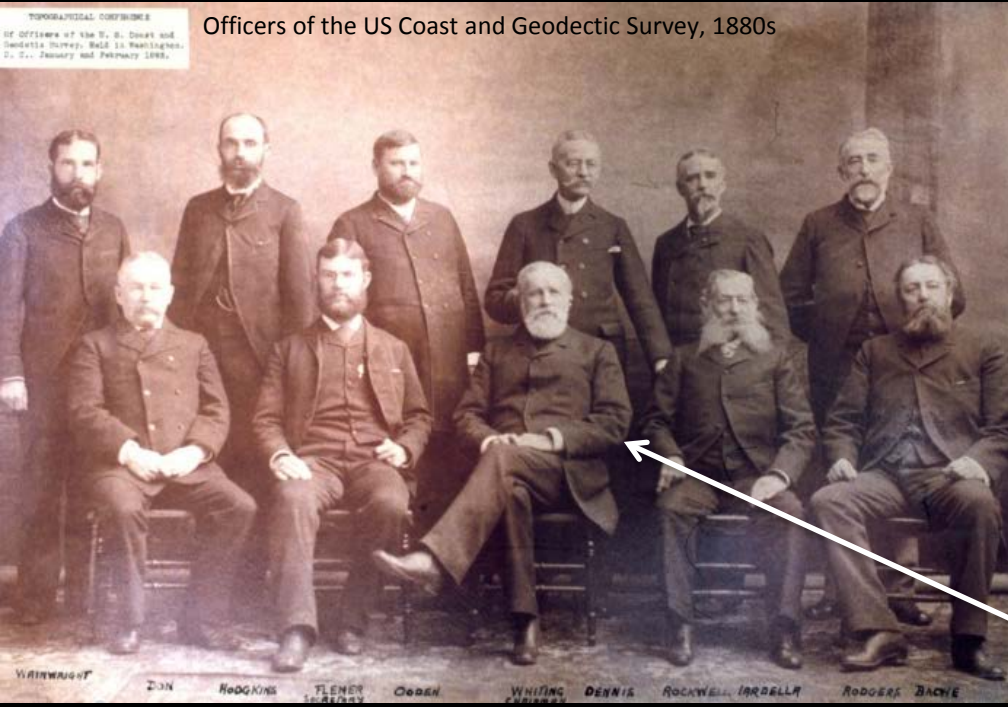
# A Post-glacial Perspective – 100+ m of Sea-level Rise in 20,000 Yrs



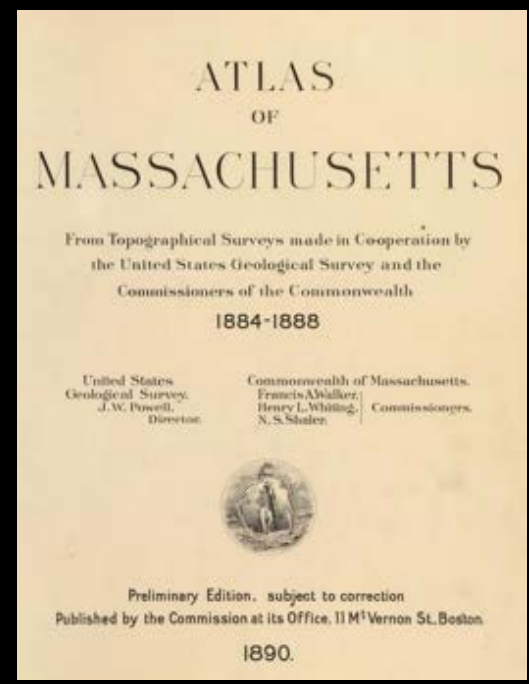


TOPOGRAPHICAL COMPANIES  
OF OFFICERS of the U. S. Coast and  
Geodetic Survey, MADE IN WASHINGTON,  
D. C., January and February 1880.

Officers of the US Coast and Geodetic Survey, 1880s



Plane Table

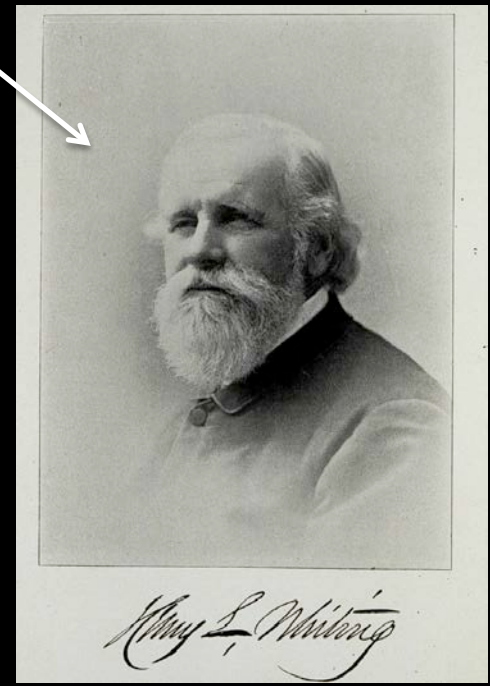


Henry Whiting

### The Coastal (US Coast and Geodetic) Survey

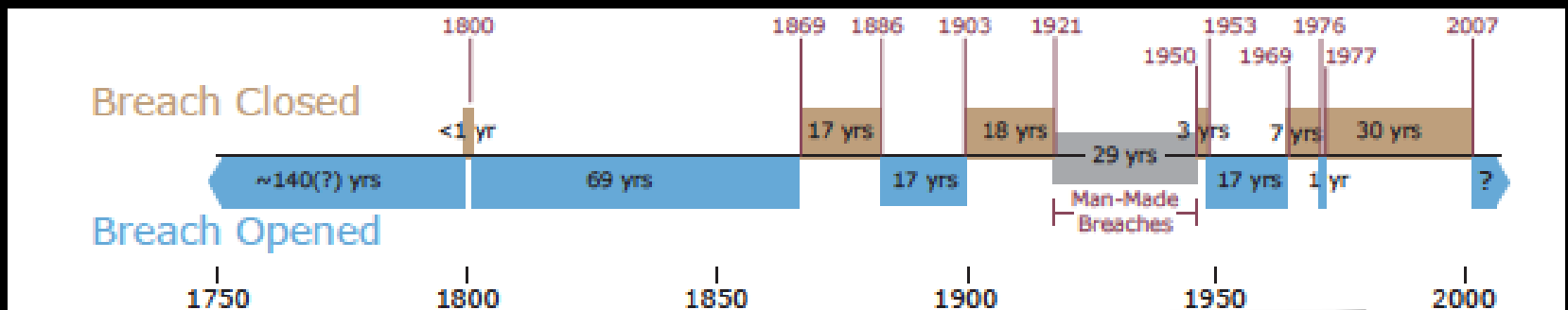
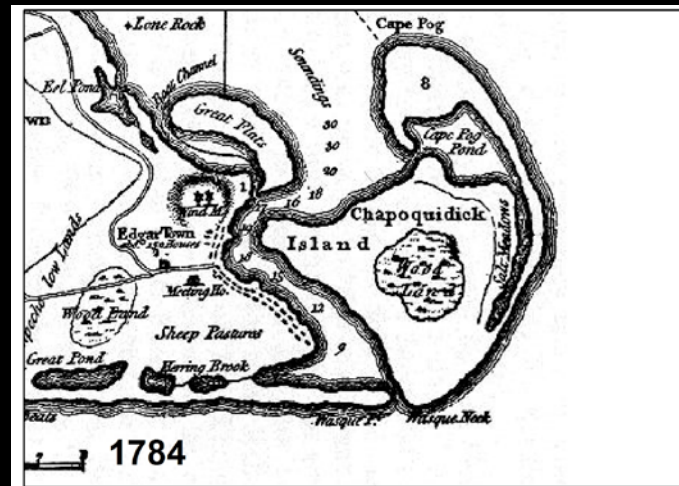
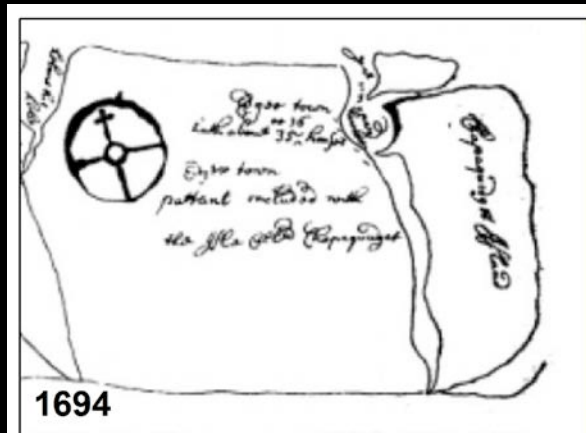


1846





# A Longer Historical Perspective ... on ... "The Separated Island"





# CHAPPAQUIDDICK

BY THE SEA  
owned by  
STATE STREET TRUST COMPANY, TRUSTEE  
By Charles H. Ide et al  
EDGARTOWN, MARTIAS VINEYARD  
MASSACHUSETTS

H.A. Millhouse Civil Engineer  
Boston, Mass. March, 1913



SEAL OF MARTIAS VINEYARD



Shoreline as of  
12/4/13





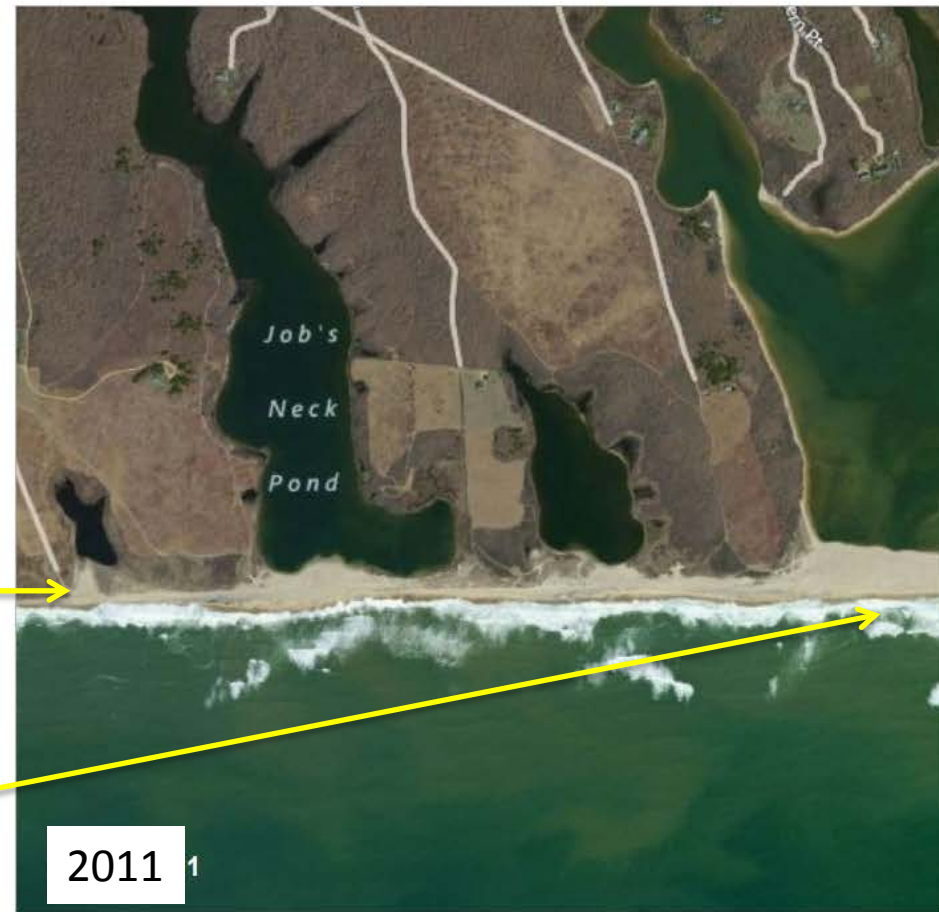
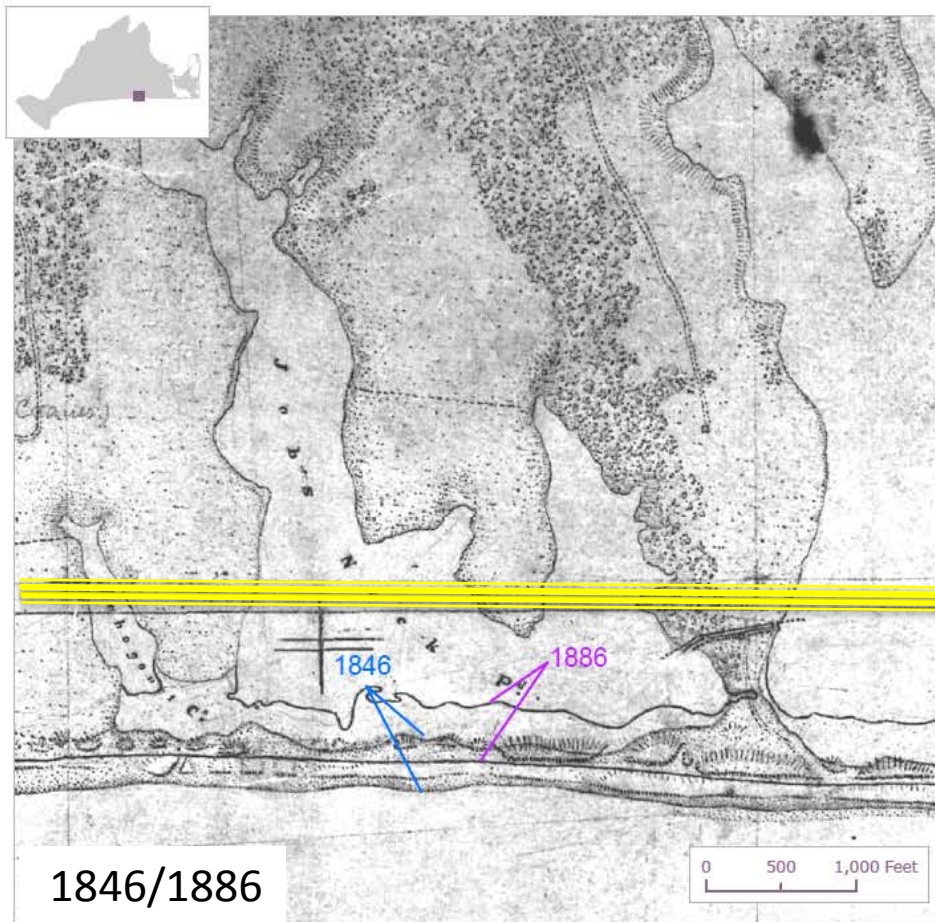












Everyone who hears these words of Mine and does not act on them, will be like a foolish man who built his house on the sand...the floods came, and the winds blew and slammed against that house; and it fell—and great was its fall.



