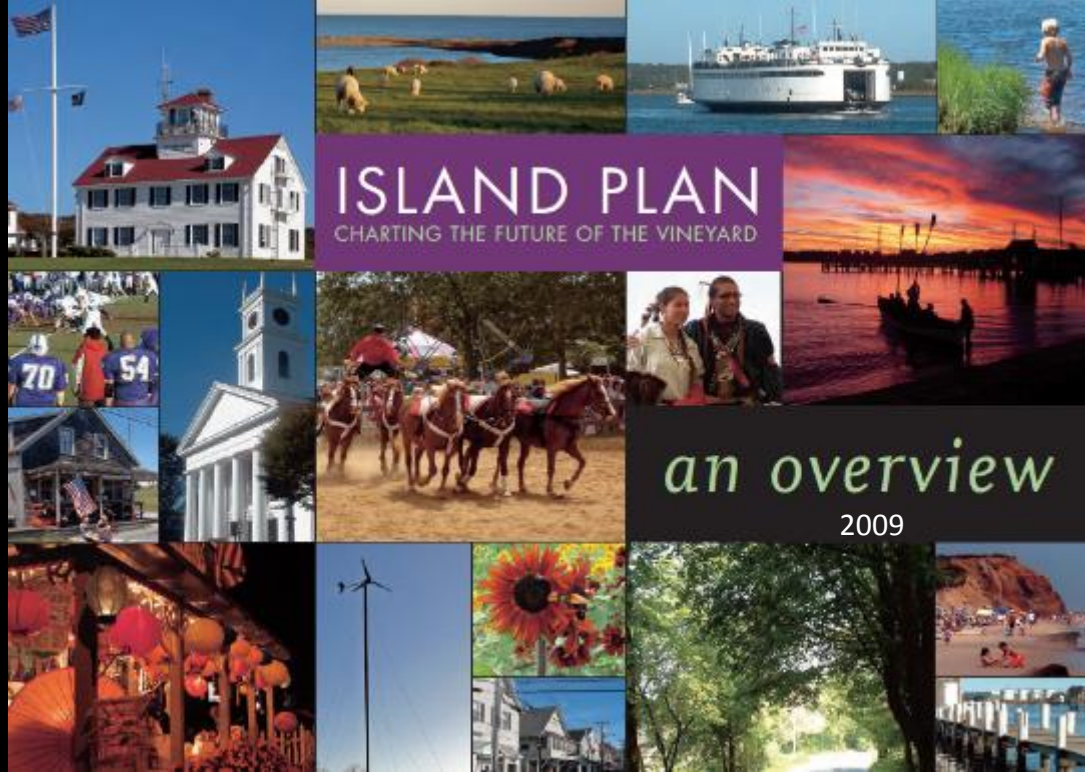


Past and Future on Martha's Vineyard







ISLAND PLAN
CHARTING THE FUTURE OF THE VINEYARD

an overview

2009

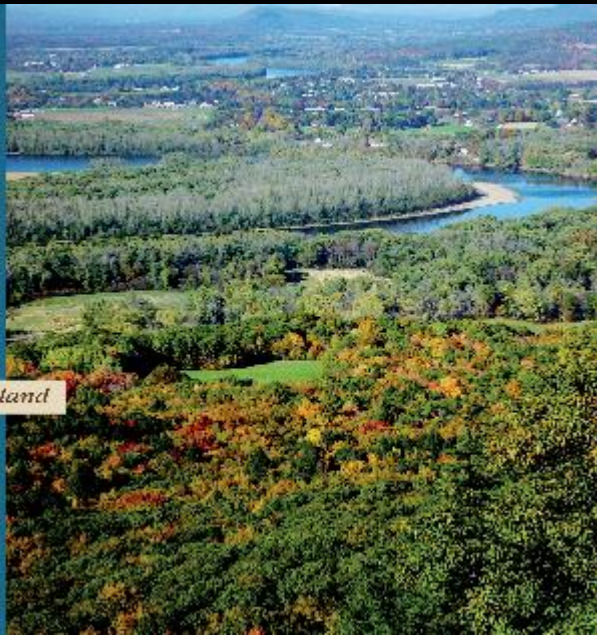
Wildlands and Woodlands



Farmlands and Communities

Broadening the Vision for New England

2017



A Meeting of Land *and* Sea

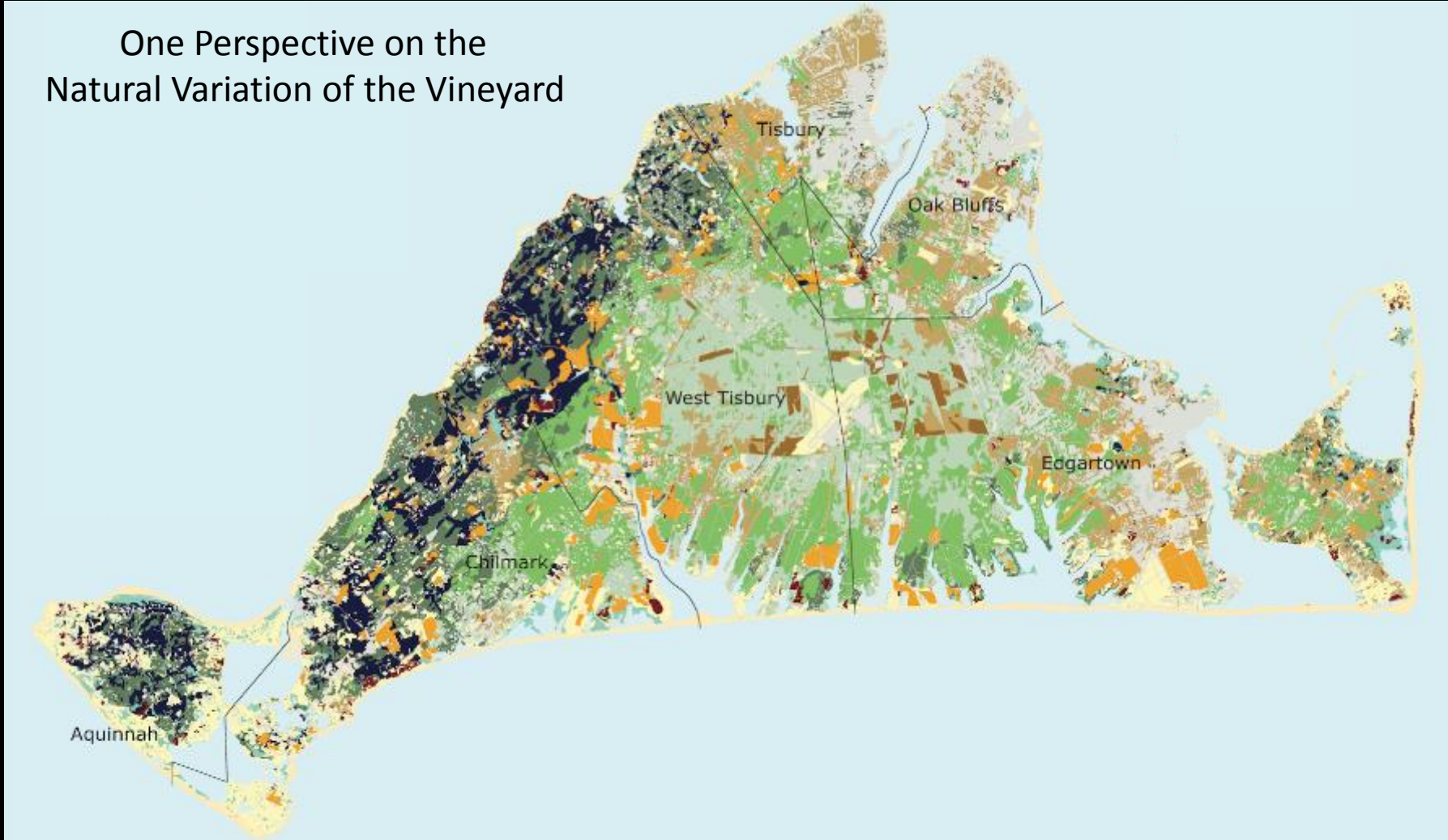
Nature and the Future of MARTHA'S VINEYARD

2017

DAVID R. FOSTER

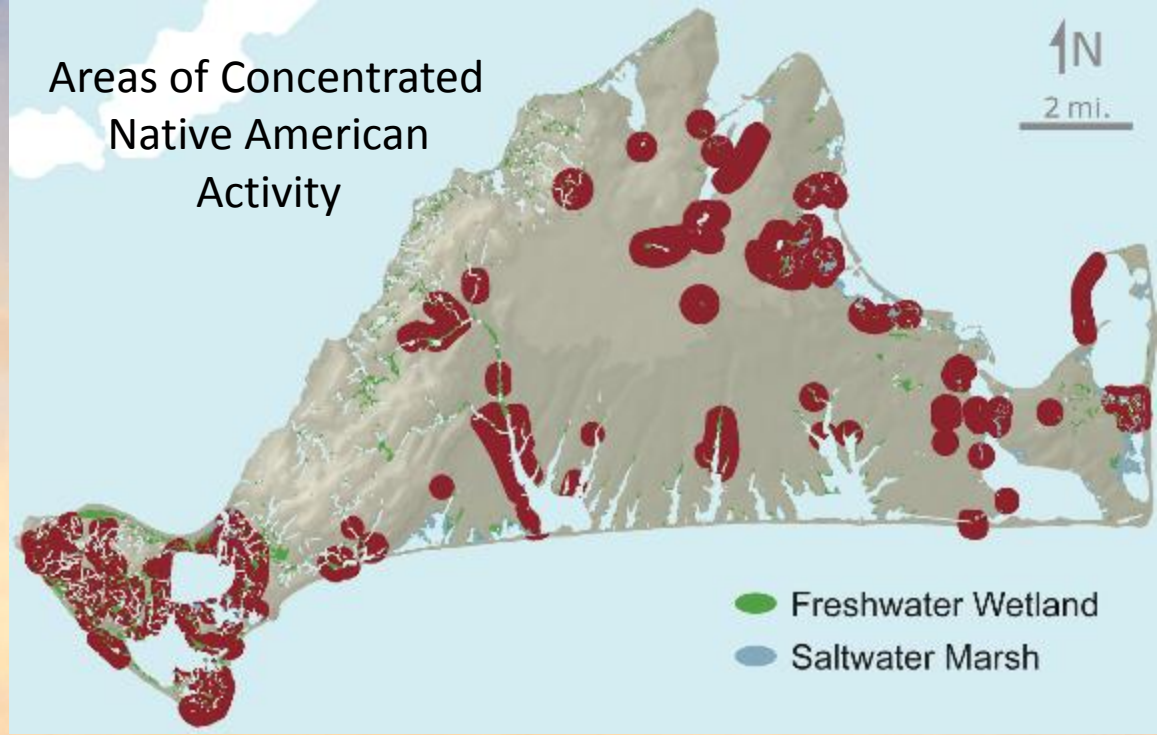


One Perspective on the Natural Variation of the Vineyard



“This variety attracts an extraordinary mix of citizens. One of Massachusetts’ two Indian towns is at the west end of the island, one of America’s first and most exclusive yacht clubs at the east, and in between, a community frequently cited as the only middle-class black seaside resort on the East Coast. There is as impressive a collection of powerful, important, and influential members of the Establishment as can be found in any one place; there is a burgeoning enclave of its young radical counterparts. There are descendants of Portuguese pioneers who came from the Azores and Cape Verde Islands on whale ships. There are new Vineyarders who have migrated to start a business or to retire in one of the three more urban down-island towns, there are New Englanders whose ancestors were the first white settlers here, whalers, fishermen, farmers, whose names still dominate up-island villages as well as the streets and stores of the towns.”

Anne Simon, 1974. *No Island is an Island*

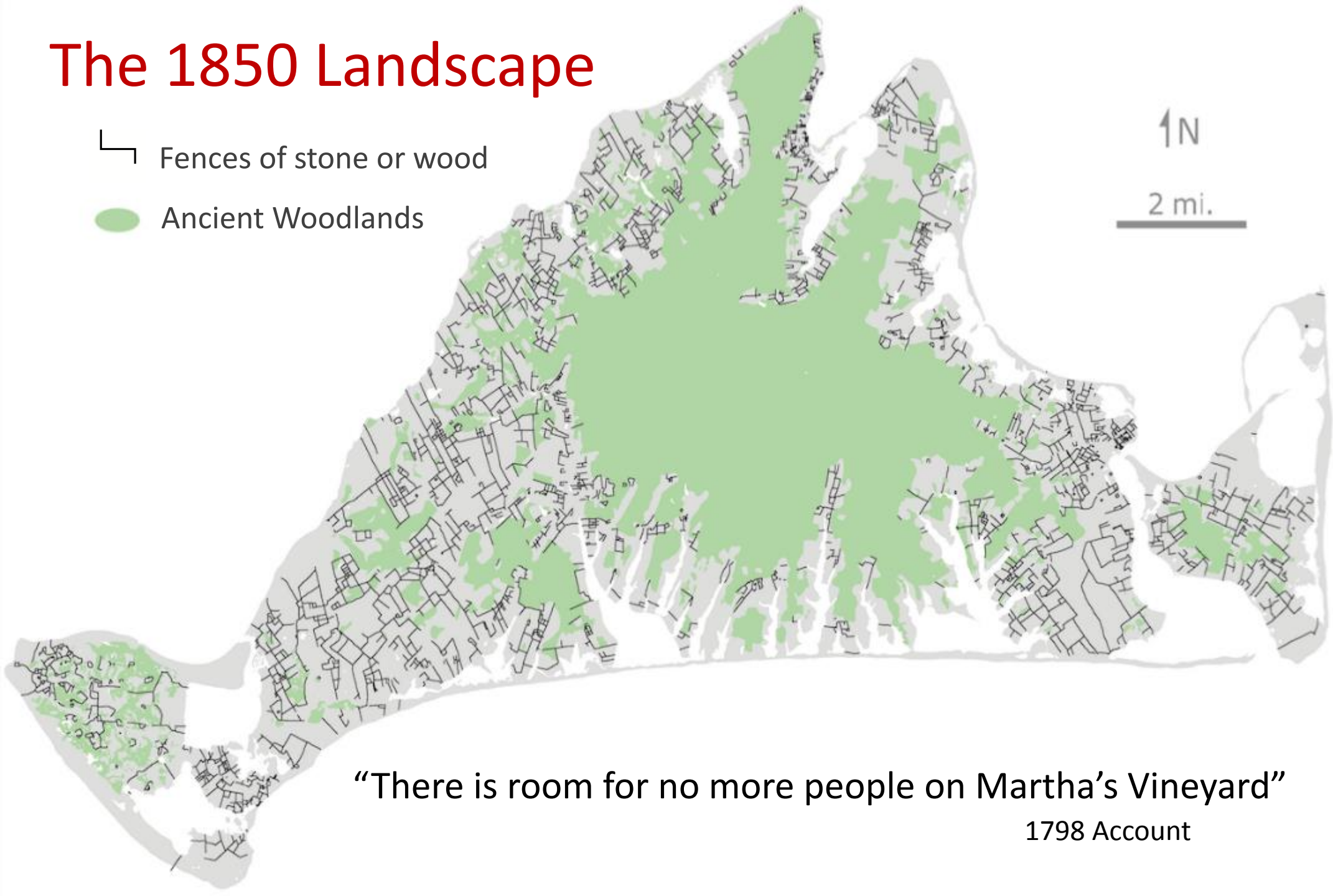


The 1850 Landscape

- └ Fences of stone or wood
- Ancient Woodlands

↑ N

2 mi.

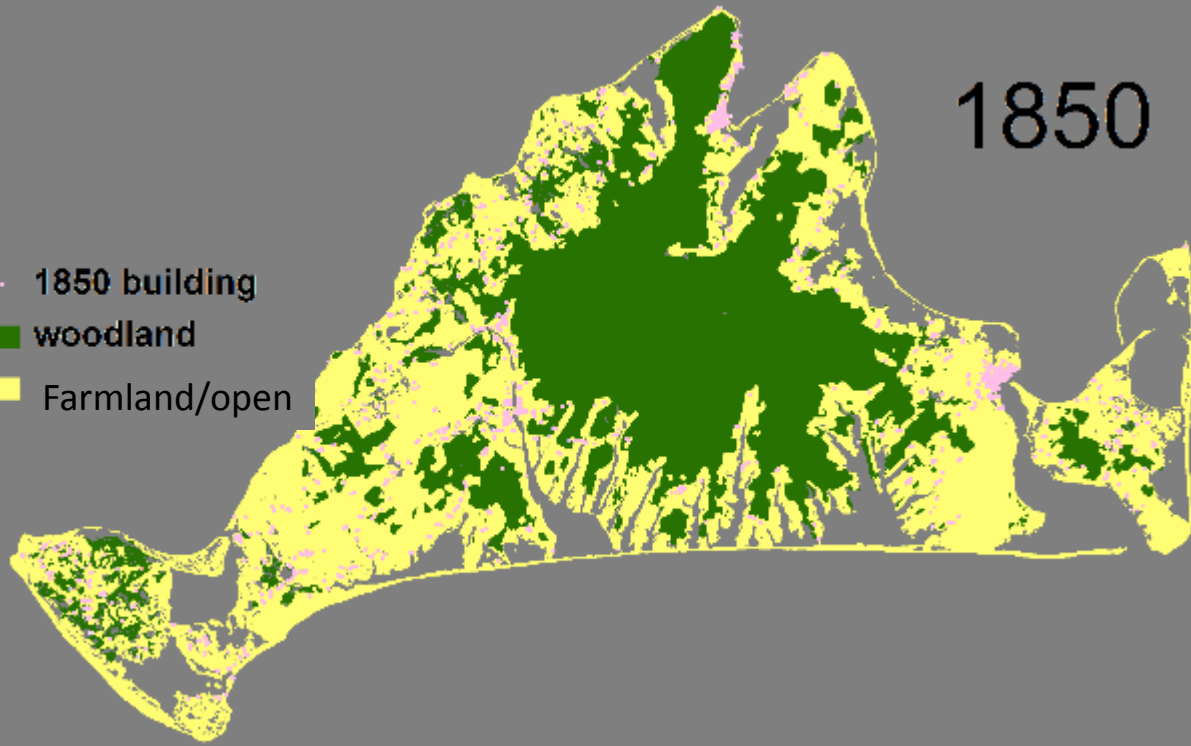


“There is room for no more people on Martha’s Vineyard”

1798 Account

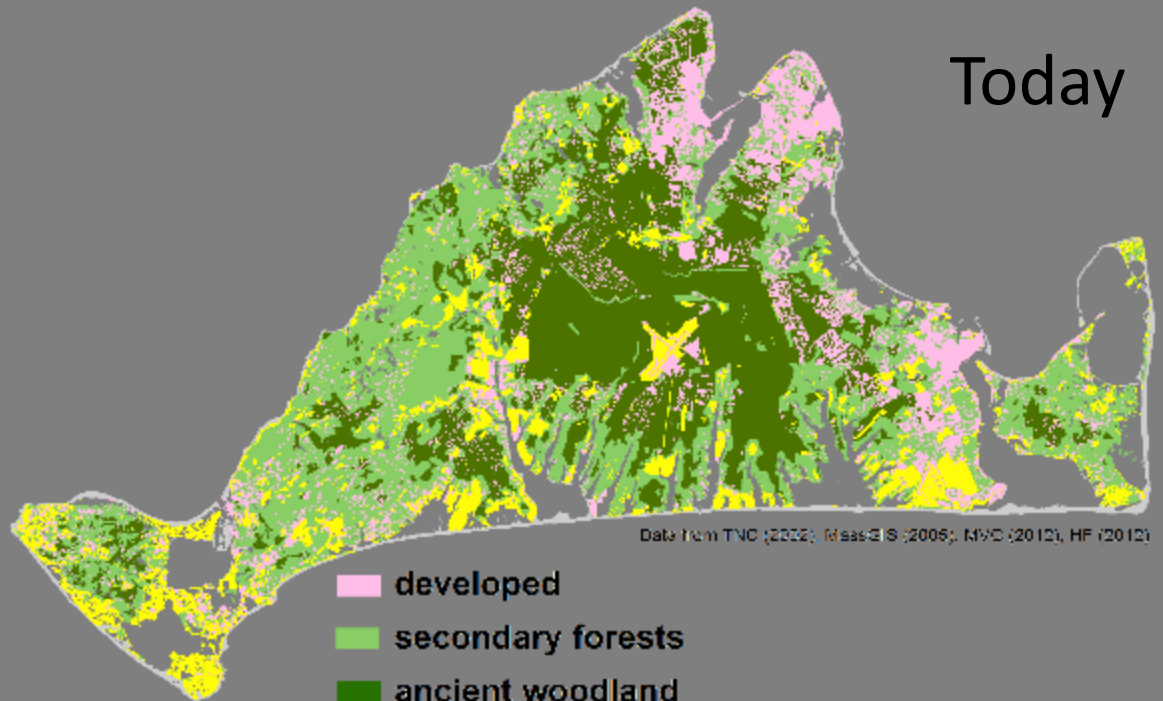
1850

- 1850 building
- woodland
- Farmland/open



Nature's resilience
= Society's
Natural infrastructure

Today



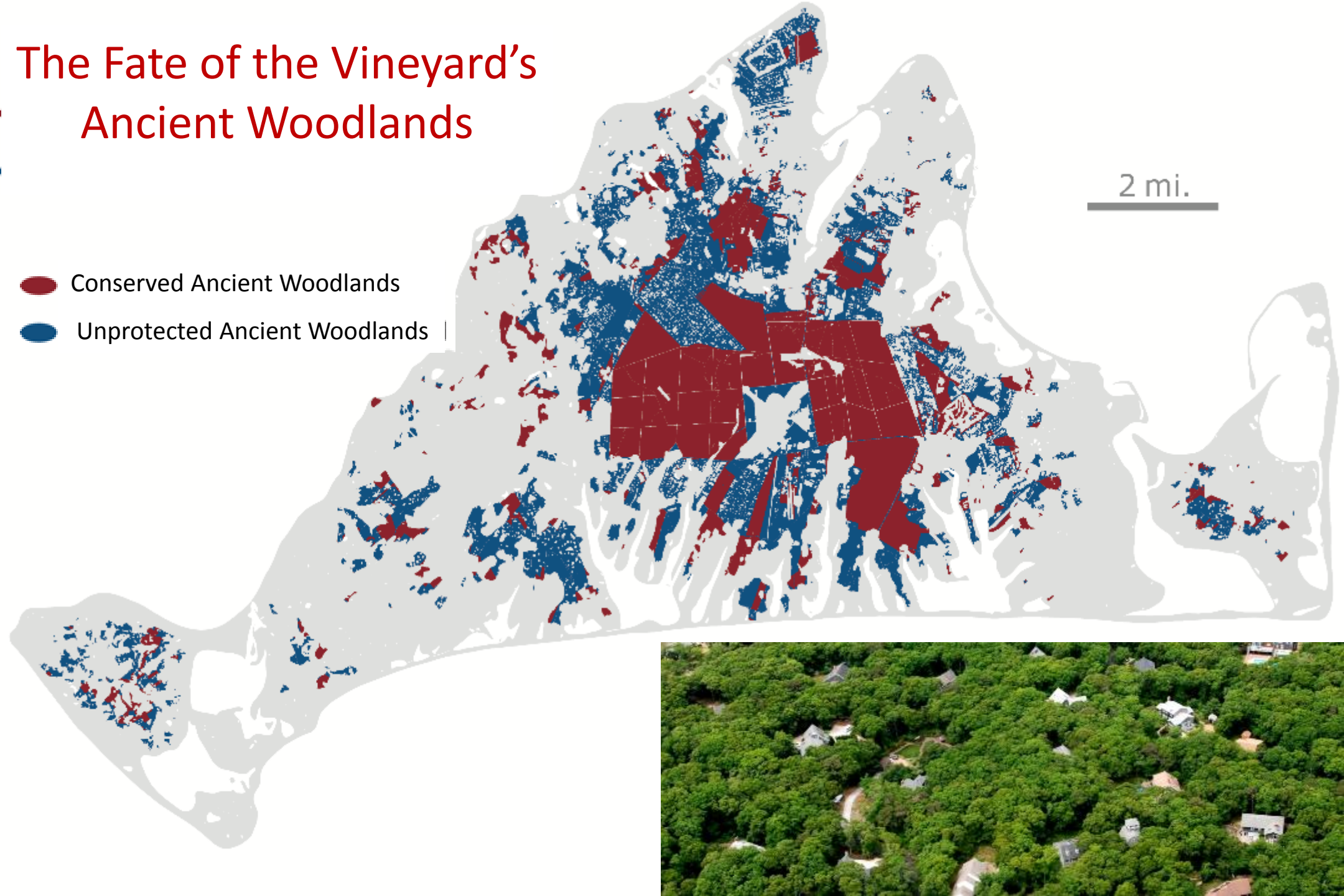
- developed
- secondary forests
- ancient woodland
- openlands (active agriculture, grass types, heath, shrublands, old fields)



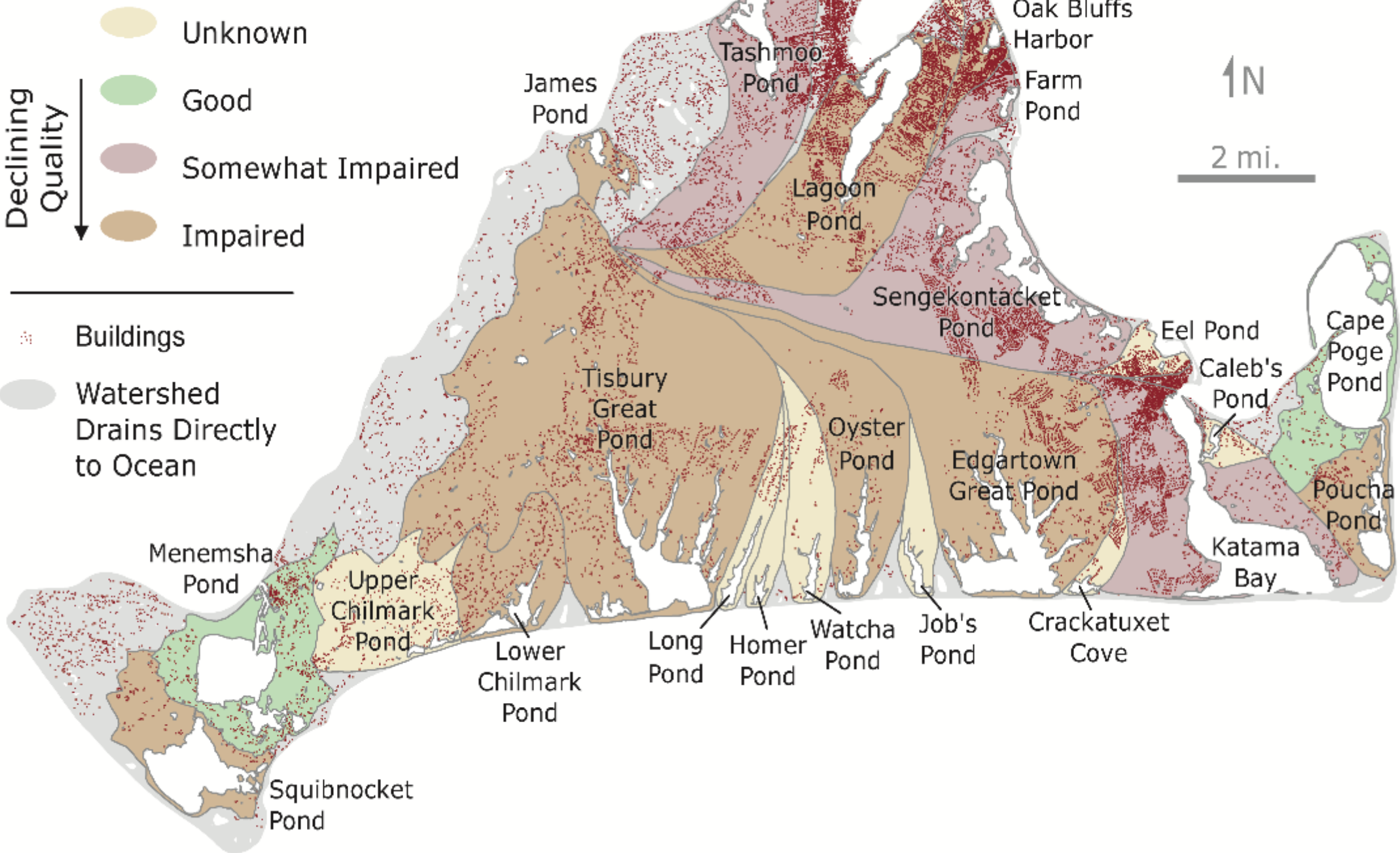
The Fate of the Vineyard's Ancient Woodlands

- Conserved Ancient Woodlands
- Unprotected Ancient Woodlands

2 mi.

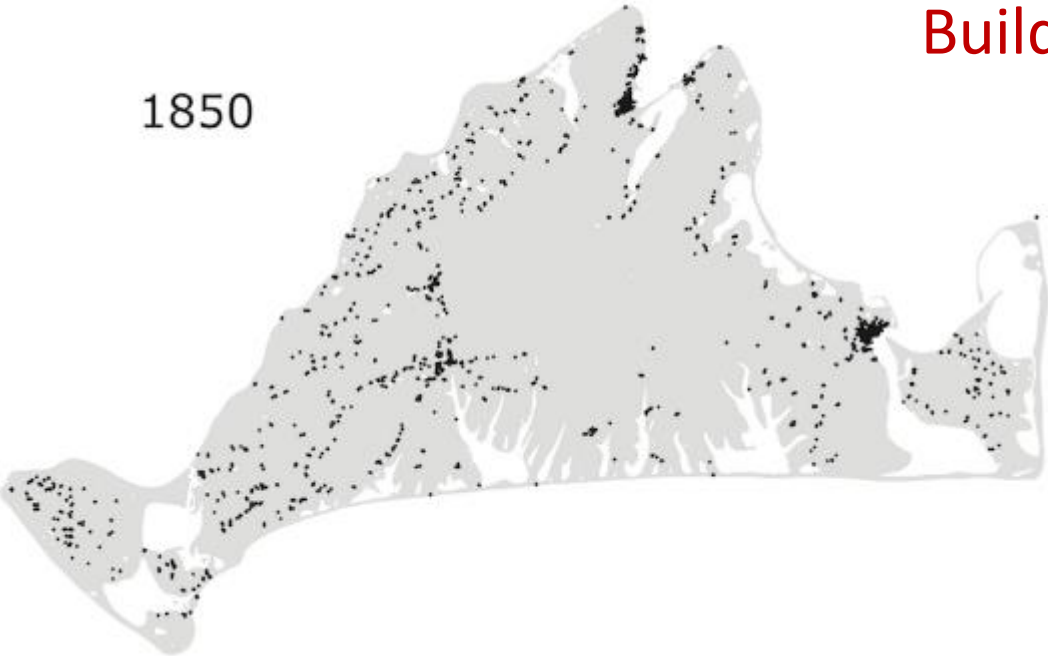


Environmental Quality of Vineyard Watersheds

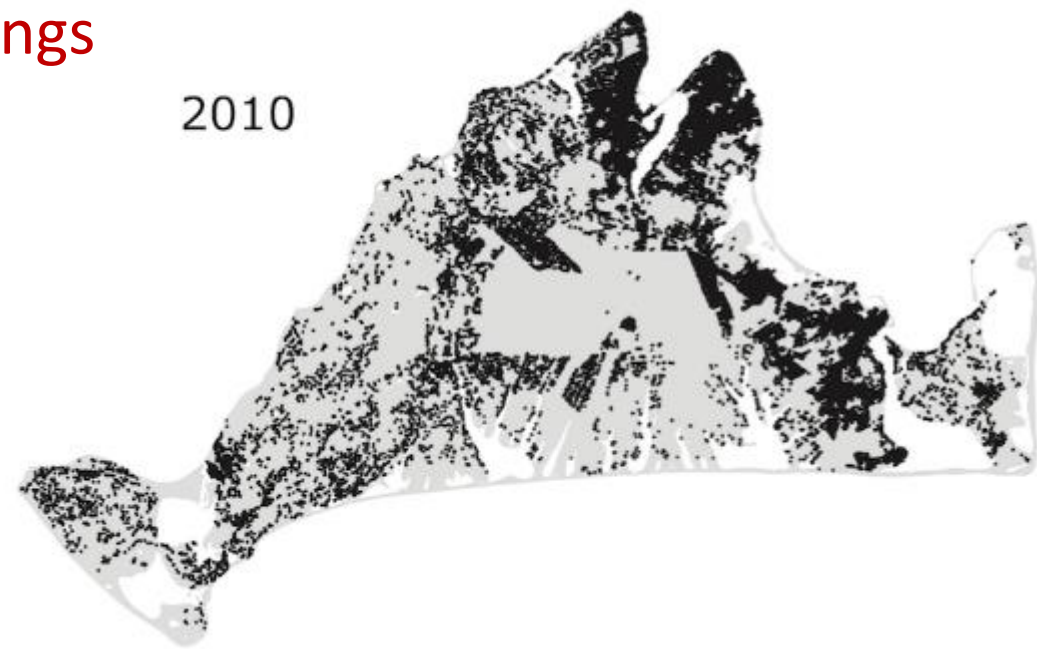


Buildings

1850



2010



The Need to Plan and Conserve Island-wide

“By the time strong county-wide or regional government with sufficient powers to deal effectively with the developer is created, Martha probably will have been raped. This was certainly the case in Long Island, Staten Island, along the New Jersey coast, and Cape Cod, where attempts to protect the environment and improve the year-round economy were found to be largely ineffective on a town by town basis.”

Metcalf & Eddy Comprehensive Plan 1971

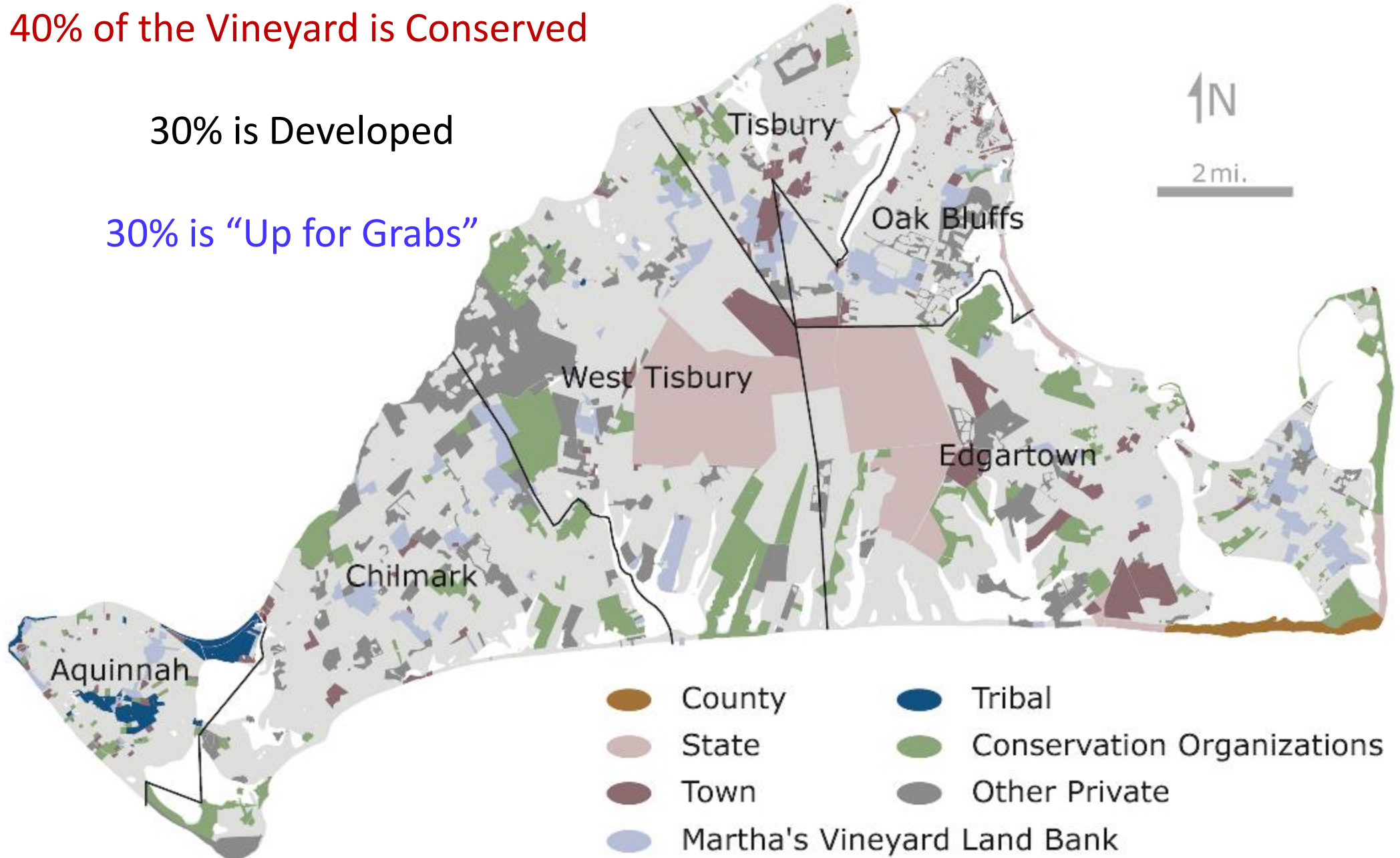
“Preserving the Island’s character is vitally important for the visitor-based economy. The natural environment, the scenic beauty and the simple Island way of life are the engines of our economy and must be carefully protected.”

Mark London, 2003 Looking at the Commission

40% of the Vineyard is Conserved

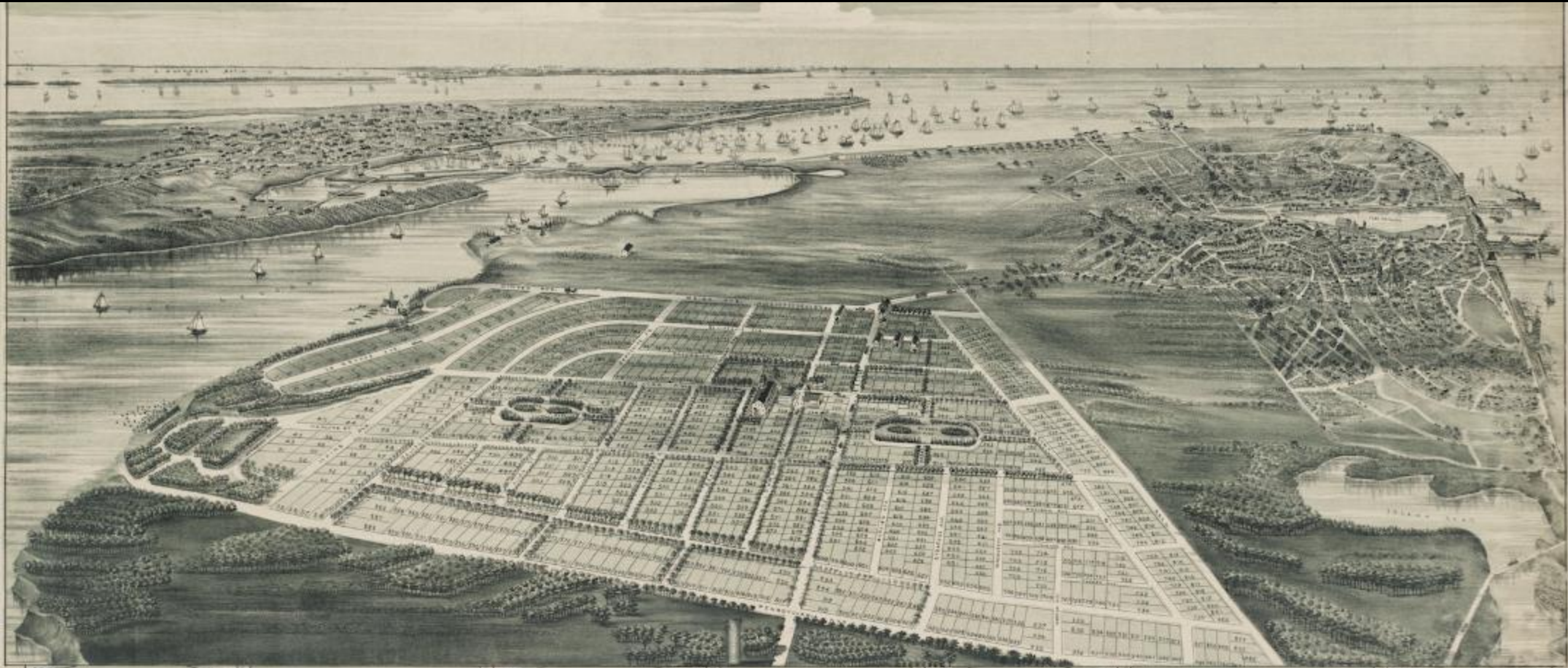
30% is Developed

30% is "Up for Grabs"



“One vast resort from Edgartown to Gay Head”

O.G. Stanley 1887 Developer and Founder of the Tashmoo Springs Water Company

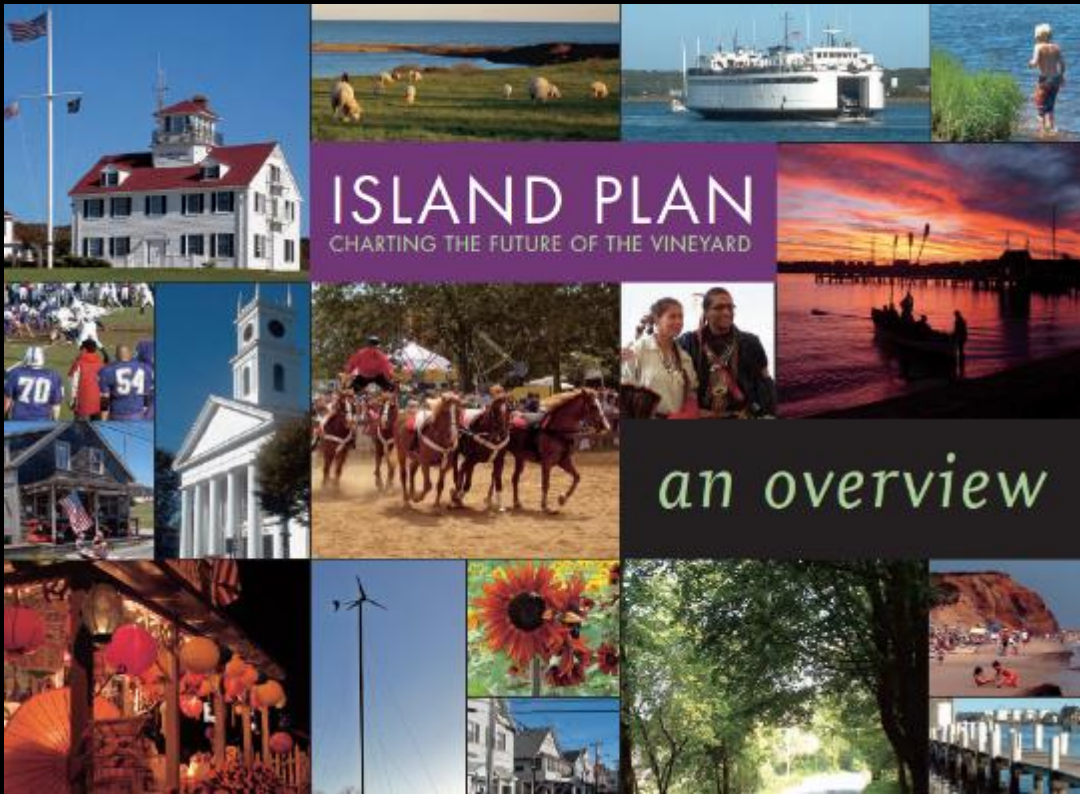


Plans can be had at Boston Office
or of Real Estate Agents at Cottage City.
**ESTIMATES OF
BUILDING AND FURNISHING COTTAGES**
Can be had by applying to
Office, 53 State Street, Boston.

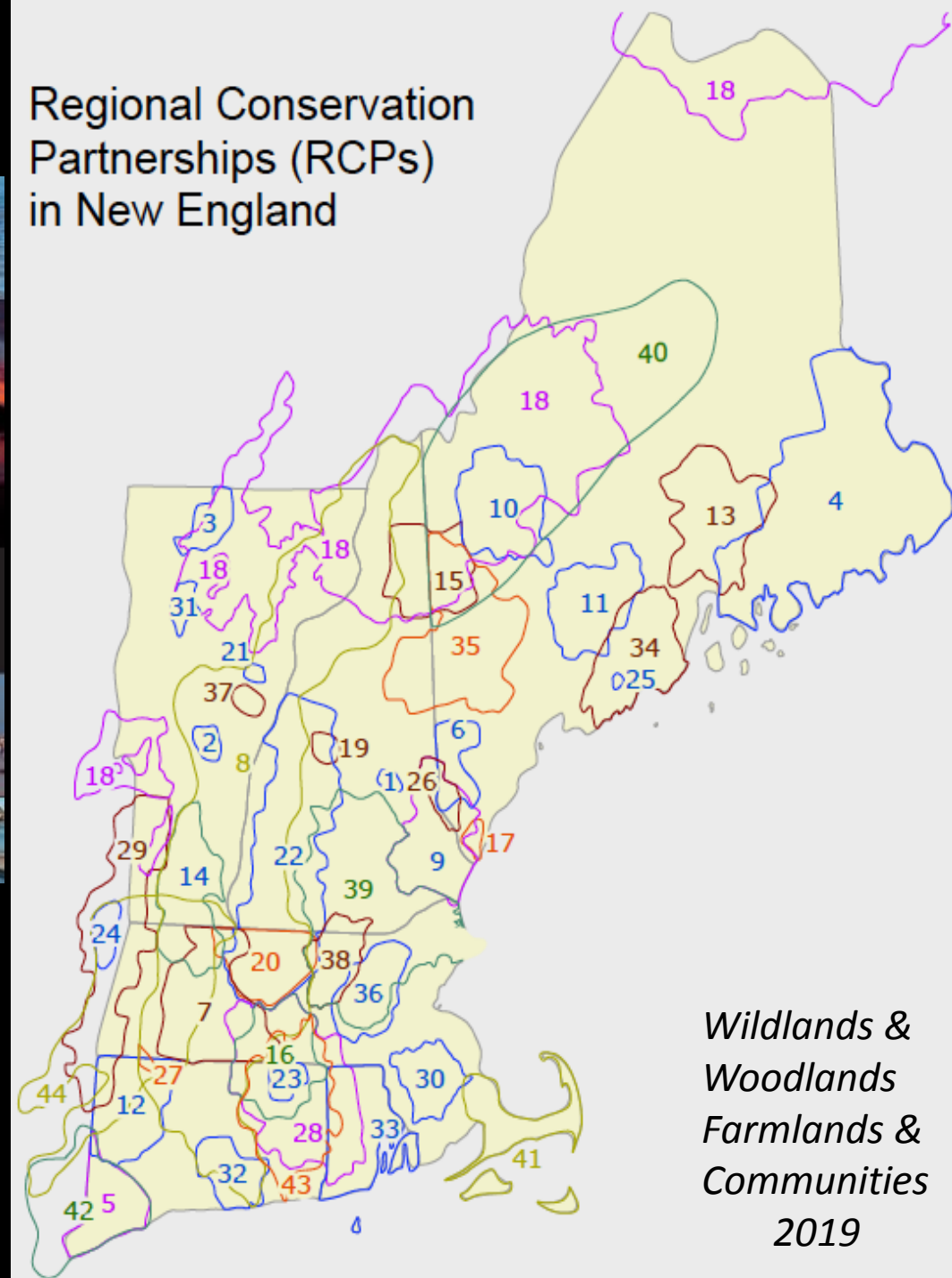
PLAT & ENVIRONS OF
LAGOON HEIGHTS,
COTTAGE CITY, MASS.
SHOWING
PROPERTY OWNED BY THE **LAGOON HEIGHTS LAND CO.,** 53 STATE ST., BOSTON, MASS.

**WHY NOT OWN A SUMMER COTTAGE
AT
LAGOON HEIGHTS,**
Which is Acknowledged to be
**THE MOST CHARMING SPOT
ON THIS ISLAND OF THE SEA!**





Regional Conservation Partnerships (RCPs) in New England



A Few of my Reasons for Optimism

- The fact that we are all here in this wonderful venue where history informs the future



A Few of my Reasons for Optimism

- The fact that we are all here in this wonderful venue where history informs the future
- The ability of Island residents to produce the Island Plan



A Few of my Reasons for Optimism

- The fact that we are all here in this wonderful venue where history informs the future
- The ability of Island residents to produce an Island Plan
- **Island-wide work by the MVC and MVLB to plan, conserve, and provide access to all**



A Few of my Reasons for Optimism

- The fact that we are all here in this wonderful venue where history informs the future
- The ability of Island residents to produce an Island Plan
- Island-wide work by the MVC and MVLB to plan, conserve, and provide access to all
- **The Chappy OS Committee; the new Land Protection Fund at the MV Permanent Endowment; Tom Chase's Village and Wilderness program; VCS and SMF**



A Few of my Reasons for Optimism

- The fact that we are all here in this wonderful venue where history informs the future
- The ability of Island residents to produce an Island Plan
- Island-wide work by the MVC and MVLB to plan, conserve, and provide access to all
- The Chappy OS Committee; the new Land Protection Fund at the MV Permanent Endowment; and Tom Chase's work to advance the Village and Wilderness program
- **The growing momentum and inspiration for affordable housing**



A Few of my Reasons for Optimism

- The fact that we are all here in this wonderful venue where history informs the future
- The ability of Island residents to produce an Island Plan
- Island-wide work by the MVC and MVLB to plan, conserve, and provide access to all
- The Chappy OS Committee; the new Land Protection Fund at the MV Permanent Endowment; and Tom Chase's work to advance the Village and Wilderness program
- The growing momentum and inspiration for affordable housing
- **Allen Healy's indefatigable zeal to farm the entire island and link conservation and agriculture**





Insights into the Island's History, Ecology and Conservation



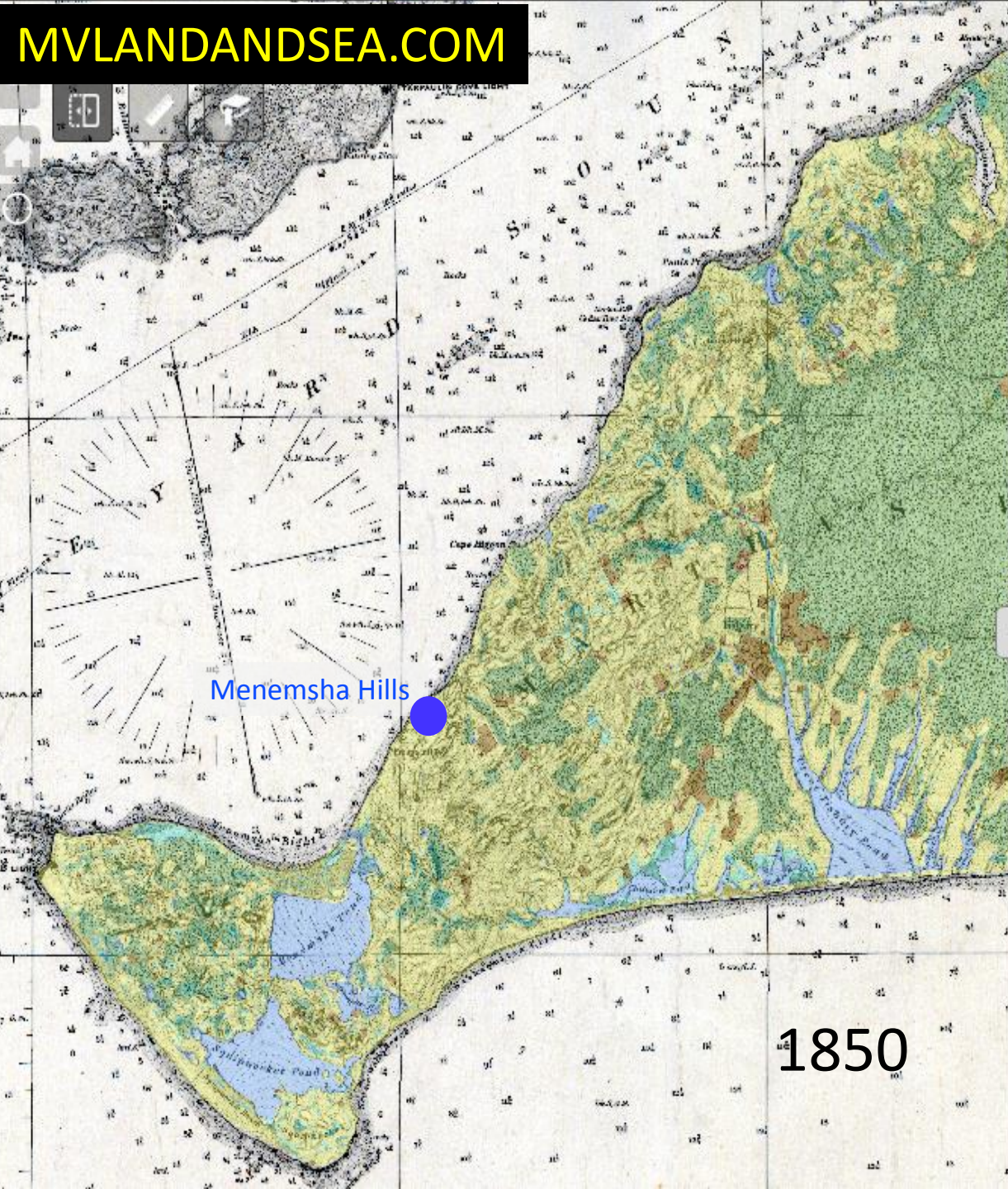
[About the Book](#)



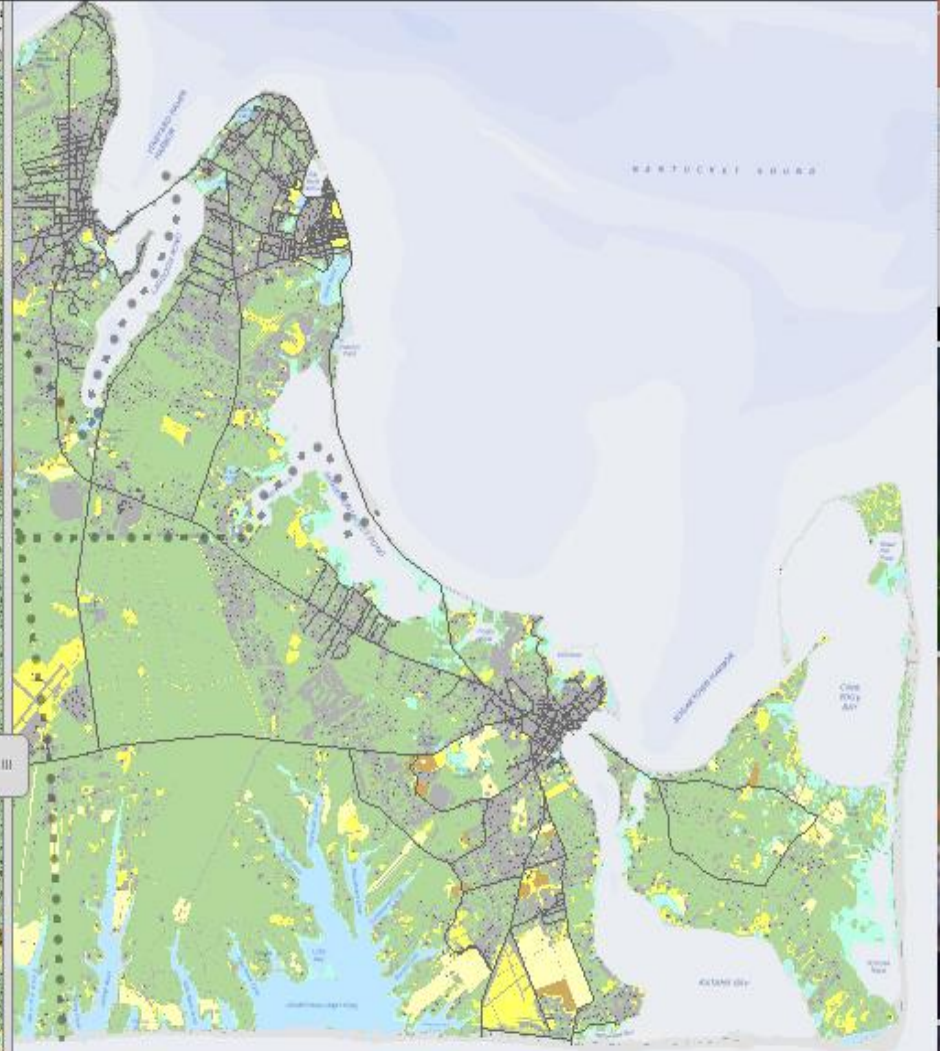
[Explore the 1850 Map](#)



[Launch the Map Viewer](#)



1850



2019