



What if Emily's Infected Aldegid Tree Spreads?

Using Spatial Analysis and GIS Maps:
*(a simulation format to understand
the potential of infestation)*

Northwest
Westminster, MA
“A simulation
2011-2012
Adelgid spreads”



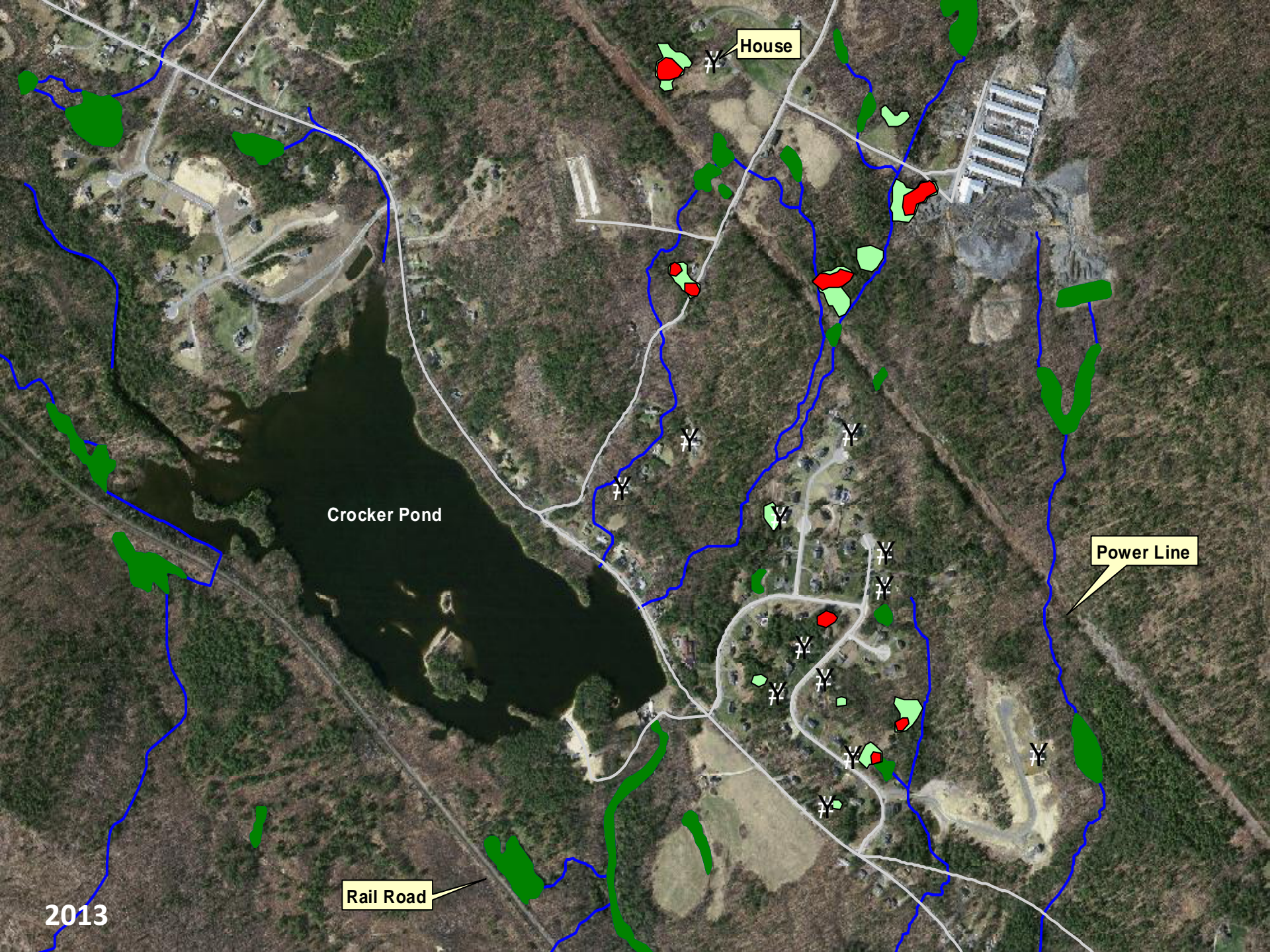
House

Crocker Pond

Power Line

Rail Road

2011



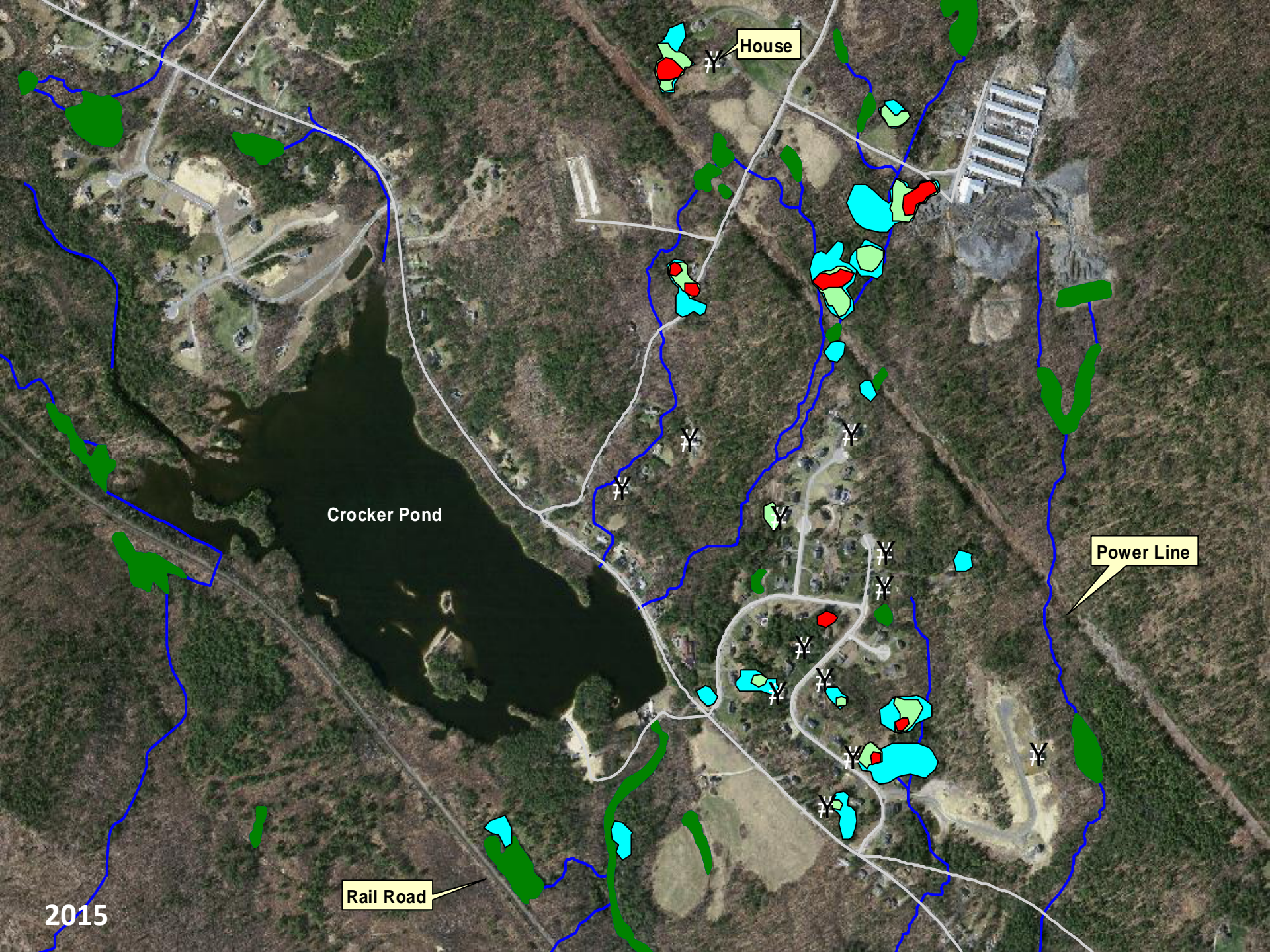
House

Crocker Pond

Power Line

Rail Road

2013



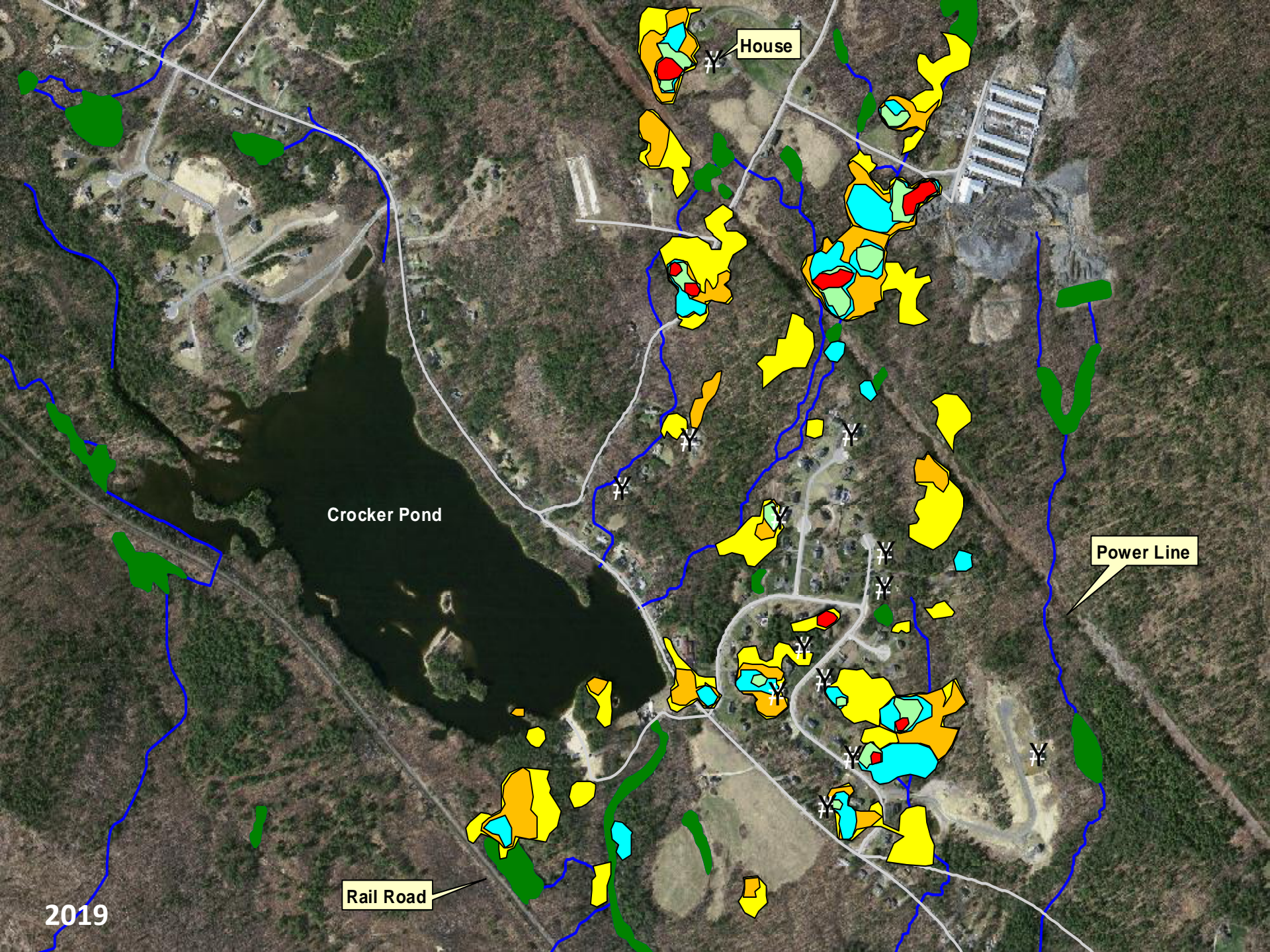
House

Crocker Pond

Power Line

Rail Road

2015



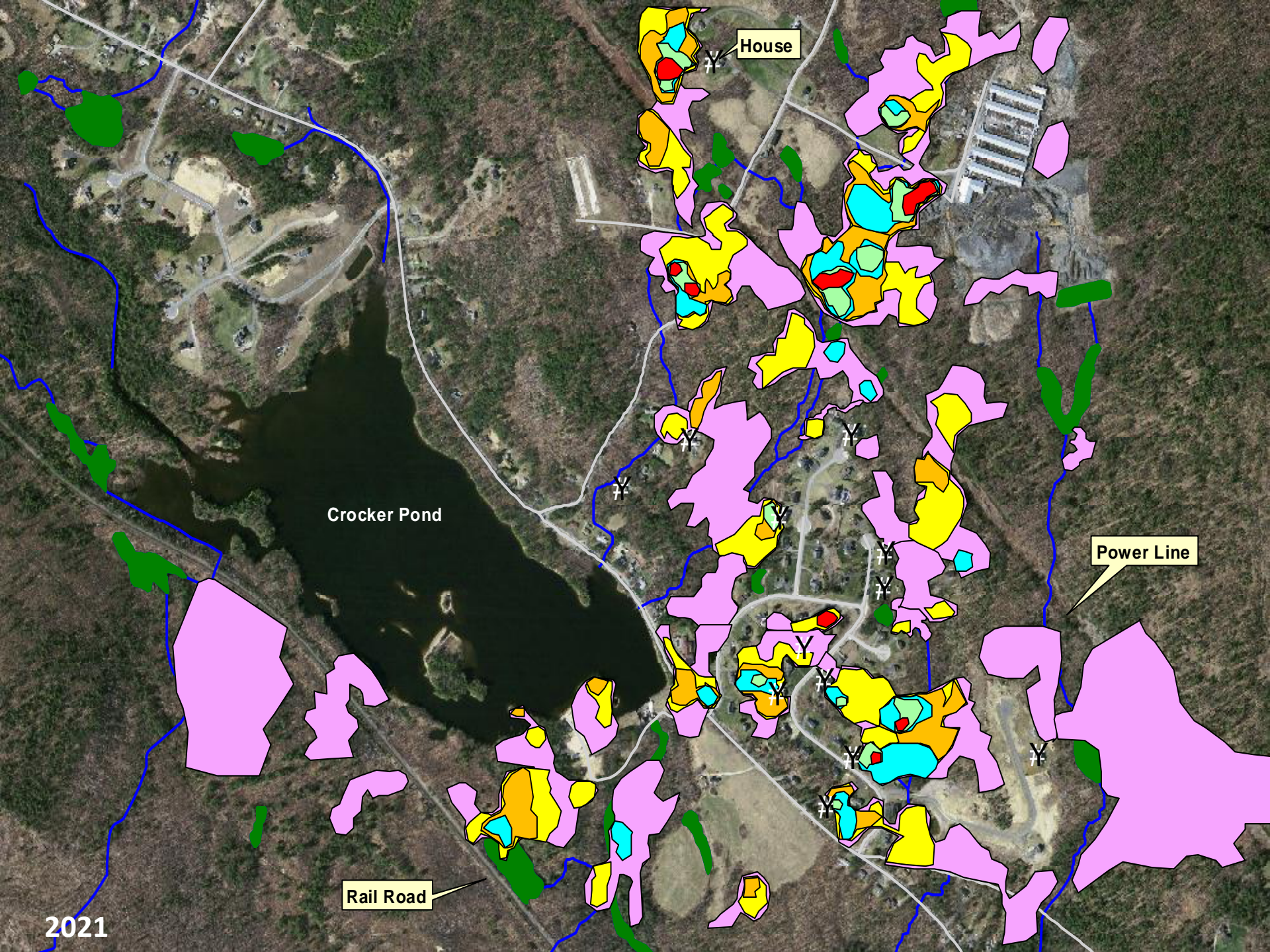
House

Crocker Pond

Power Line

Rail Road

2019



House

Crocker Pond

Power Line

Rail Road

2021

Mass Natural - Area A

Westminster, MA

"A simulation

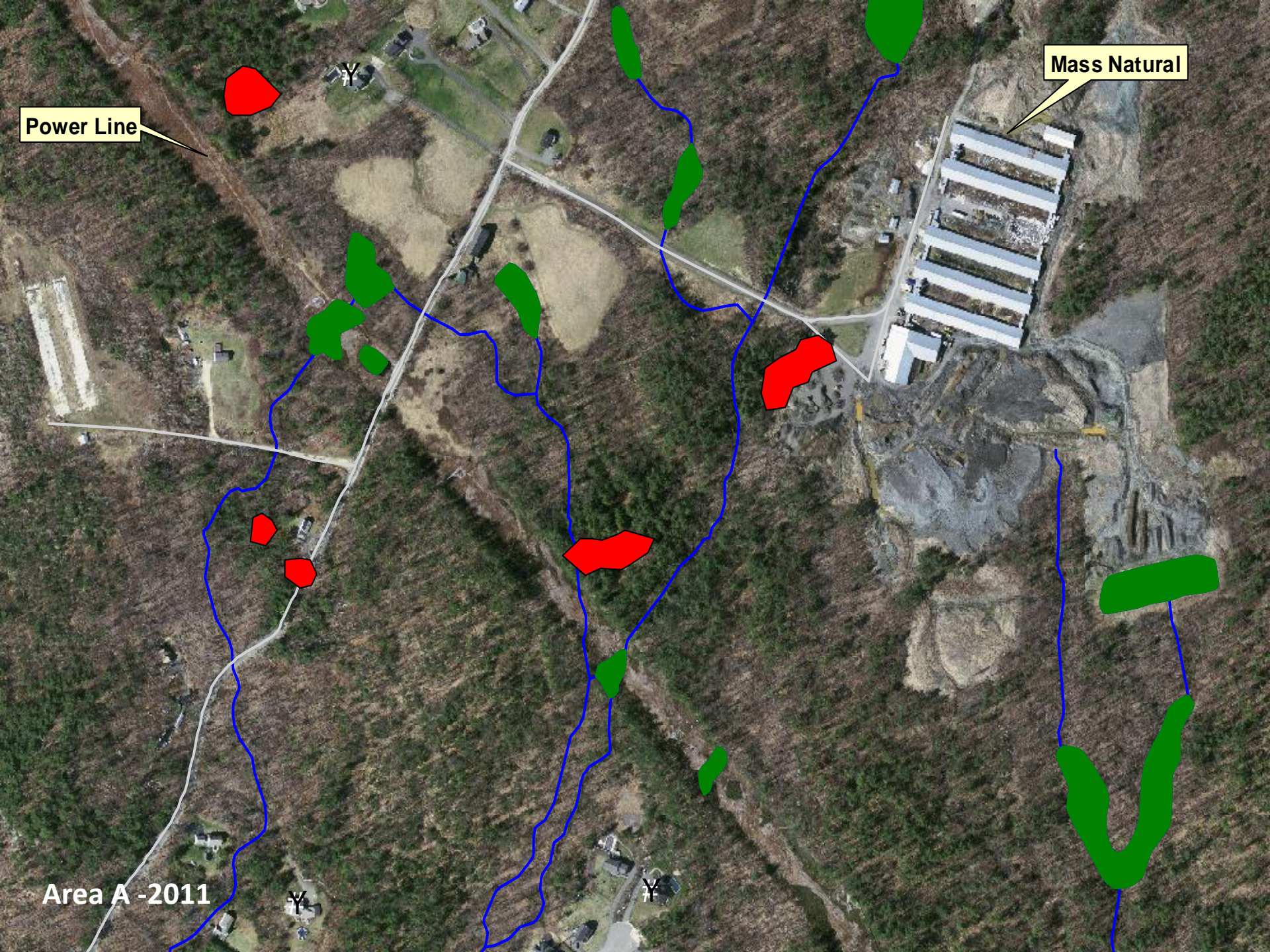
2011-2012

Adelgid spreads"

Power Line

Mass Natural

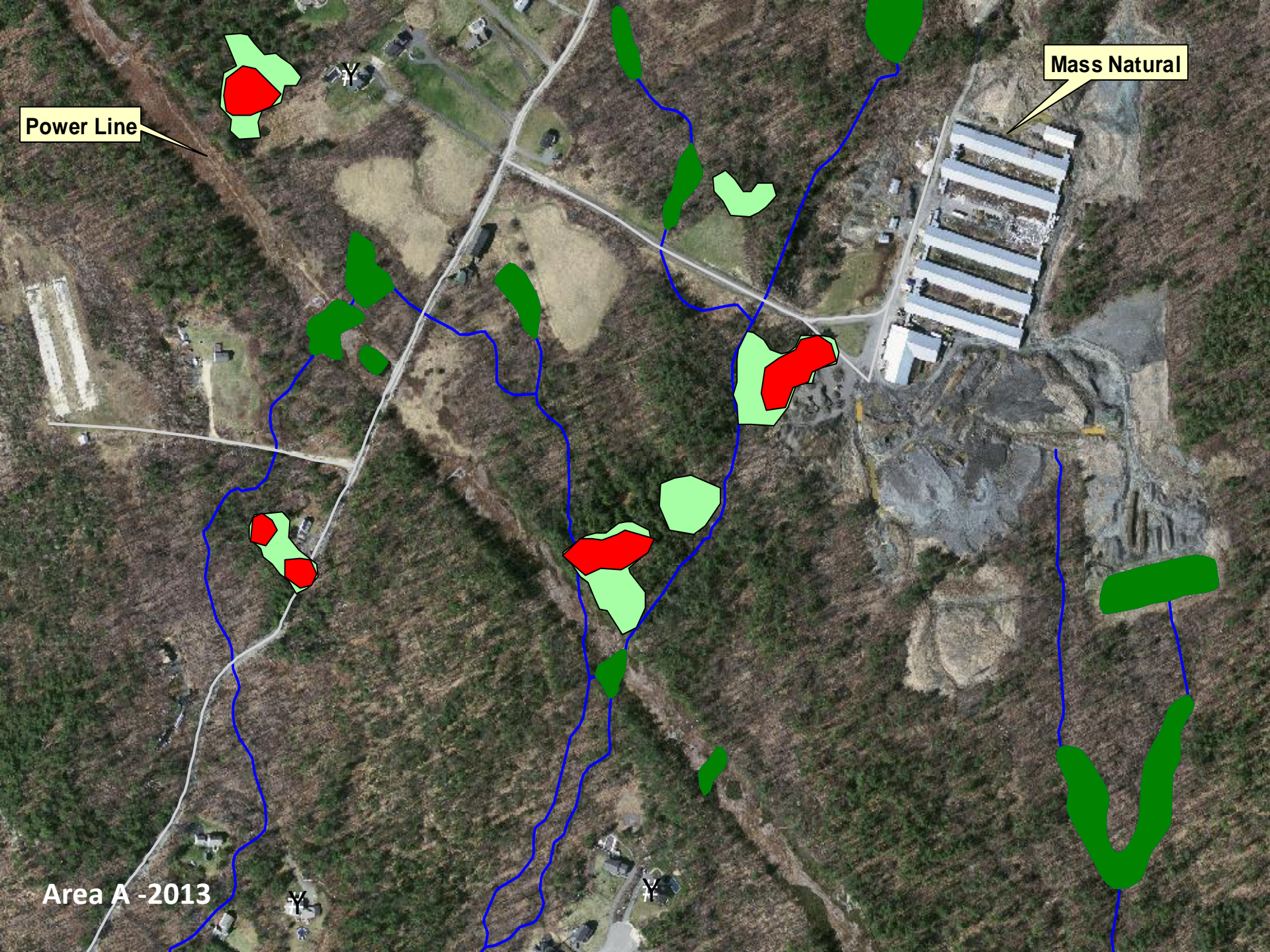
Area A -2011



Power Line

Mass Natural

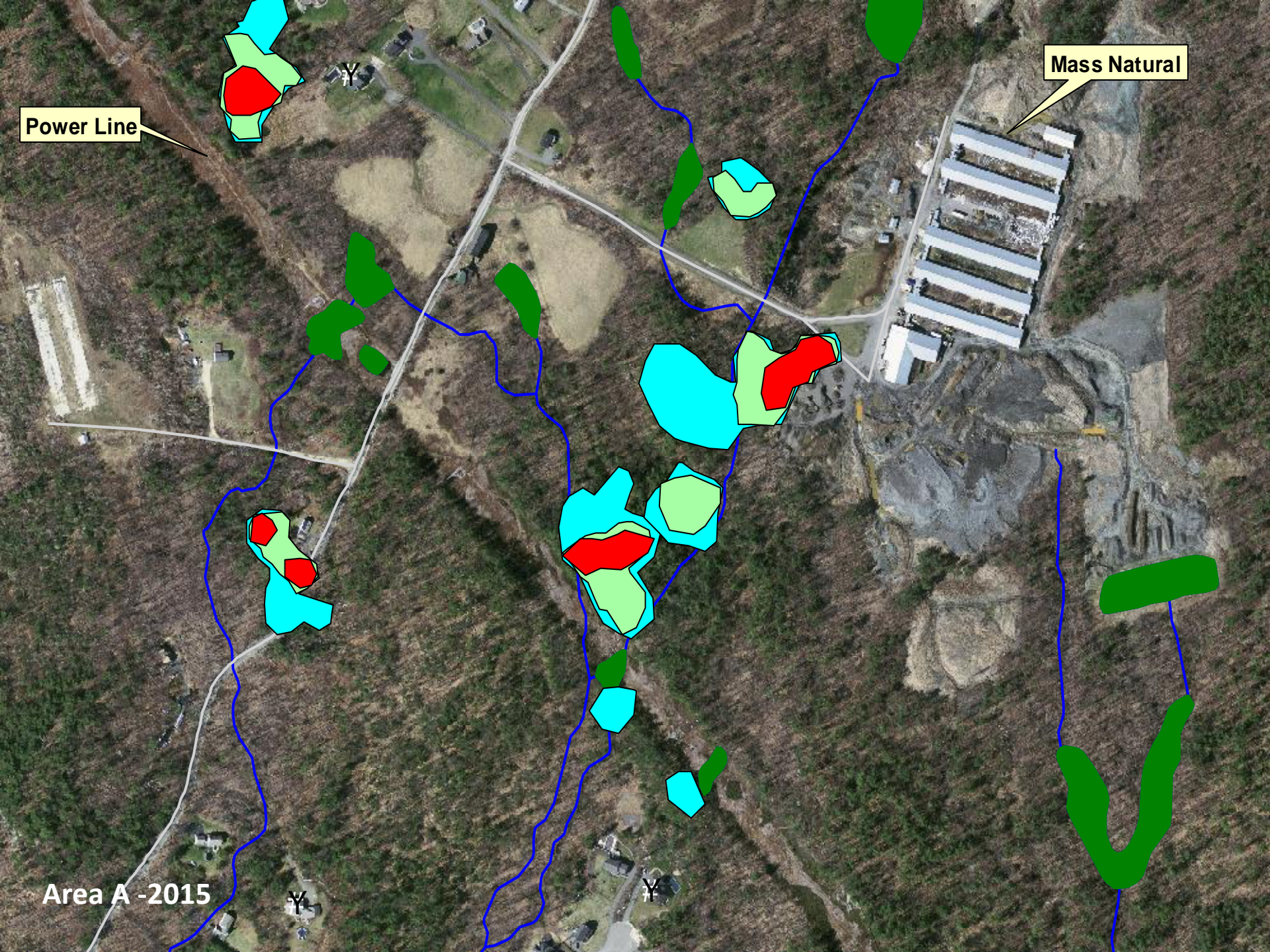
Area A -2013



Power Line

Mass Natural

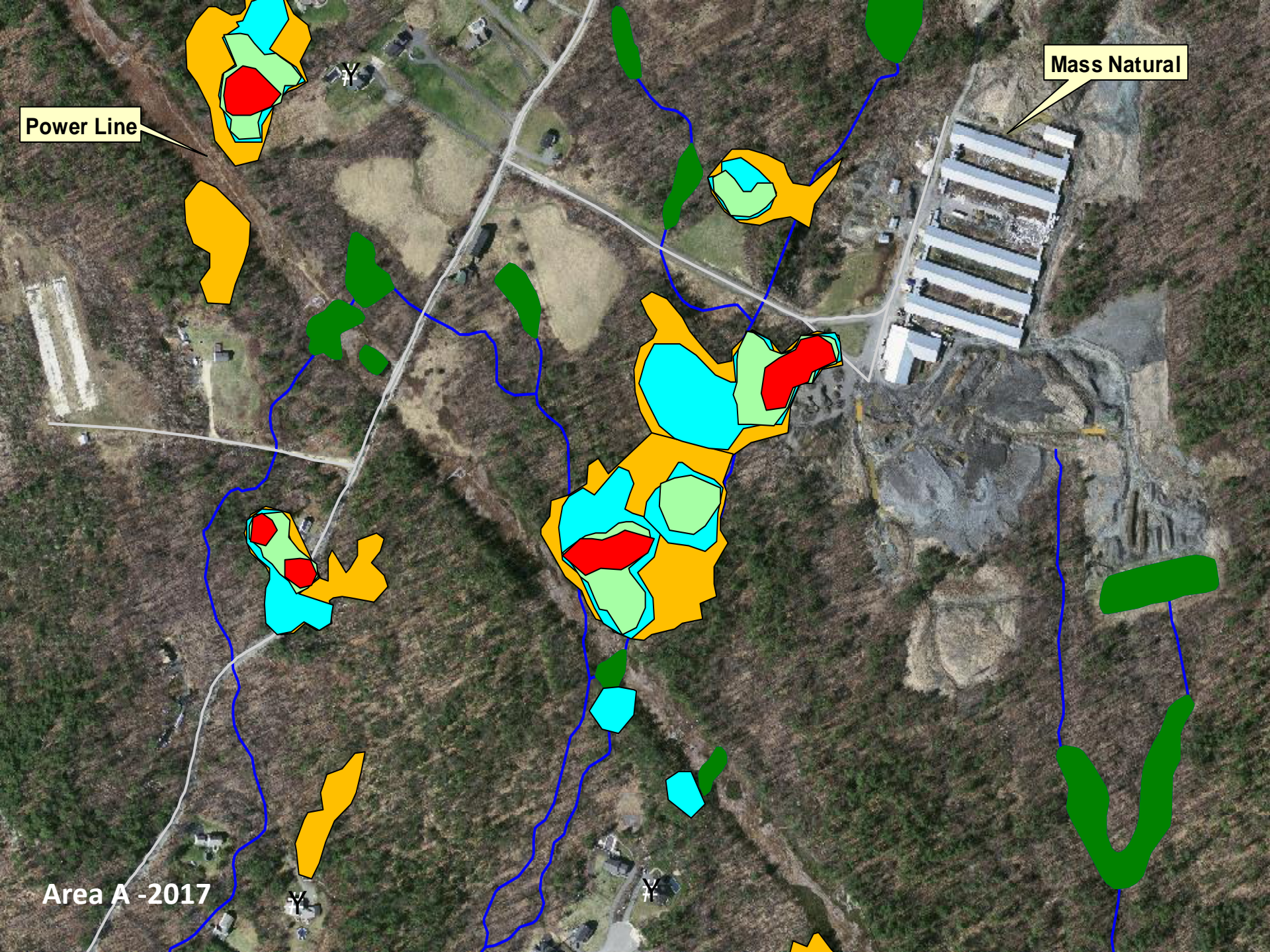
Area A -2015



Power Line

Mass Natural

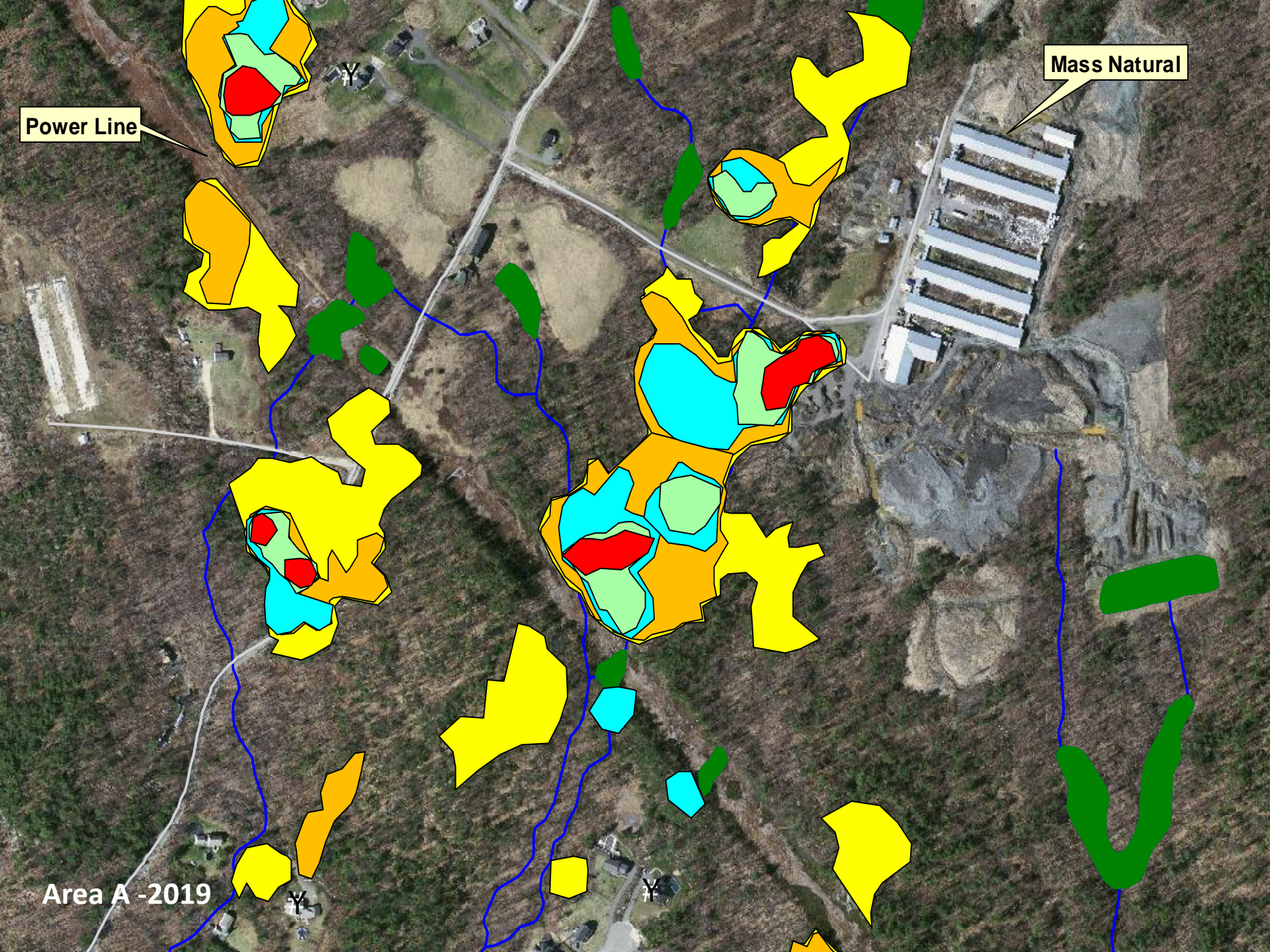
Area A -2017



Power Line

Mass Natural

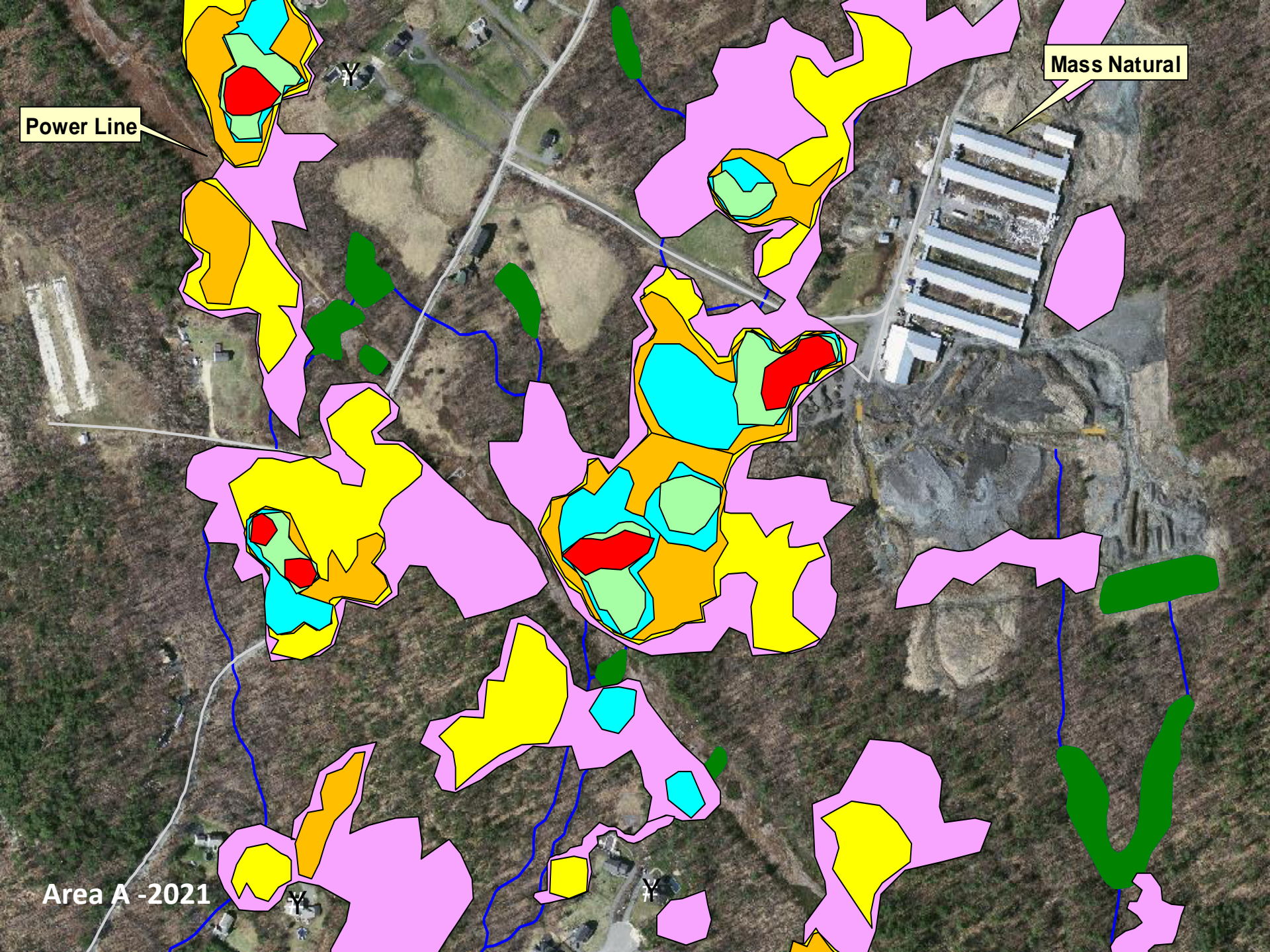
Area A -2019



Power Line

Mass Natural

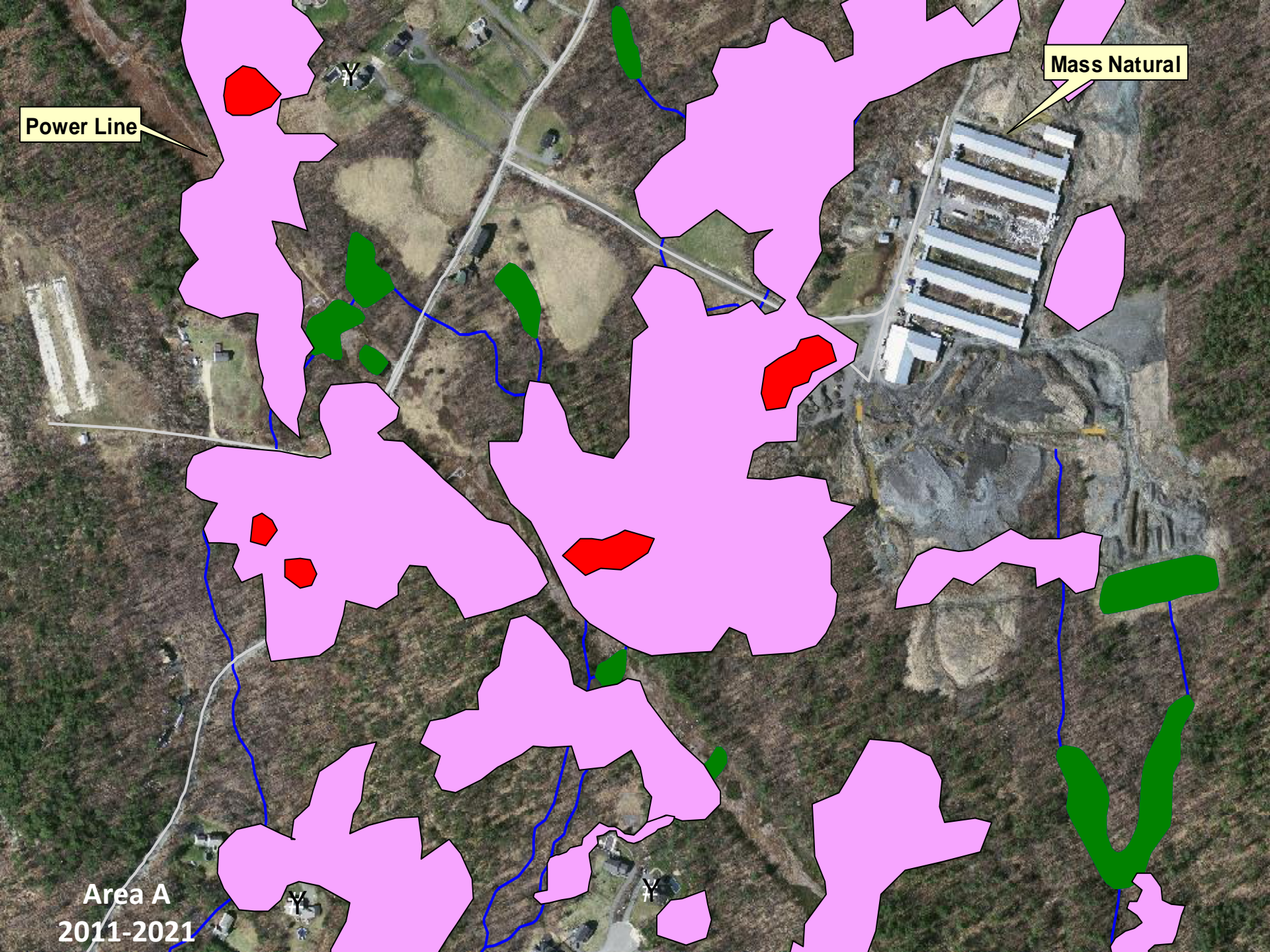
Area A -2021



Power Line

Mass Natural

Area A
2011-2021



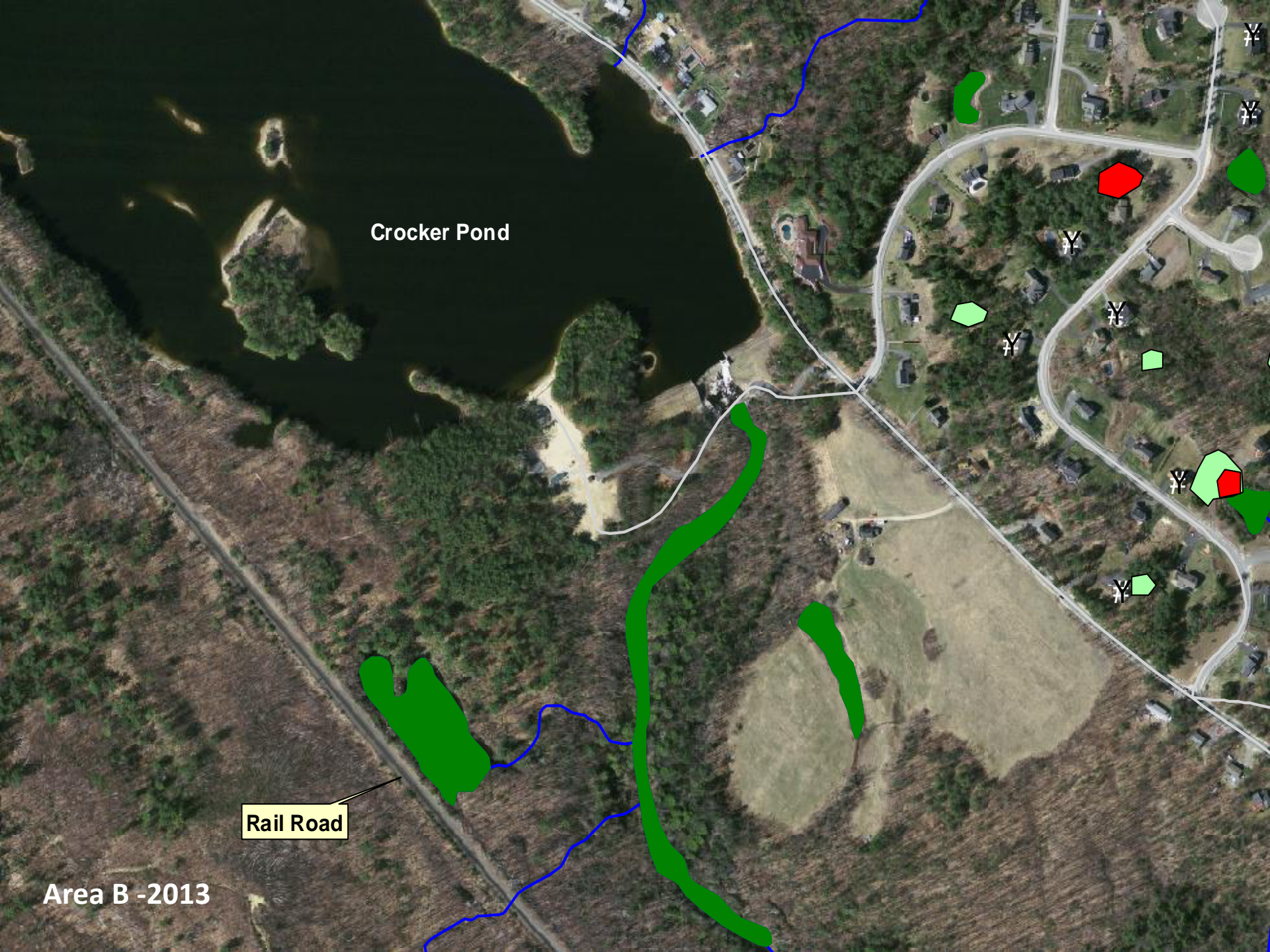
Crocker Pond- Area B

Westminster, MA

"A simulation

2011-2012

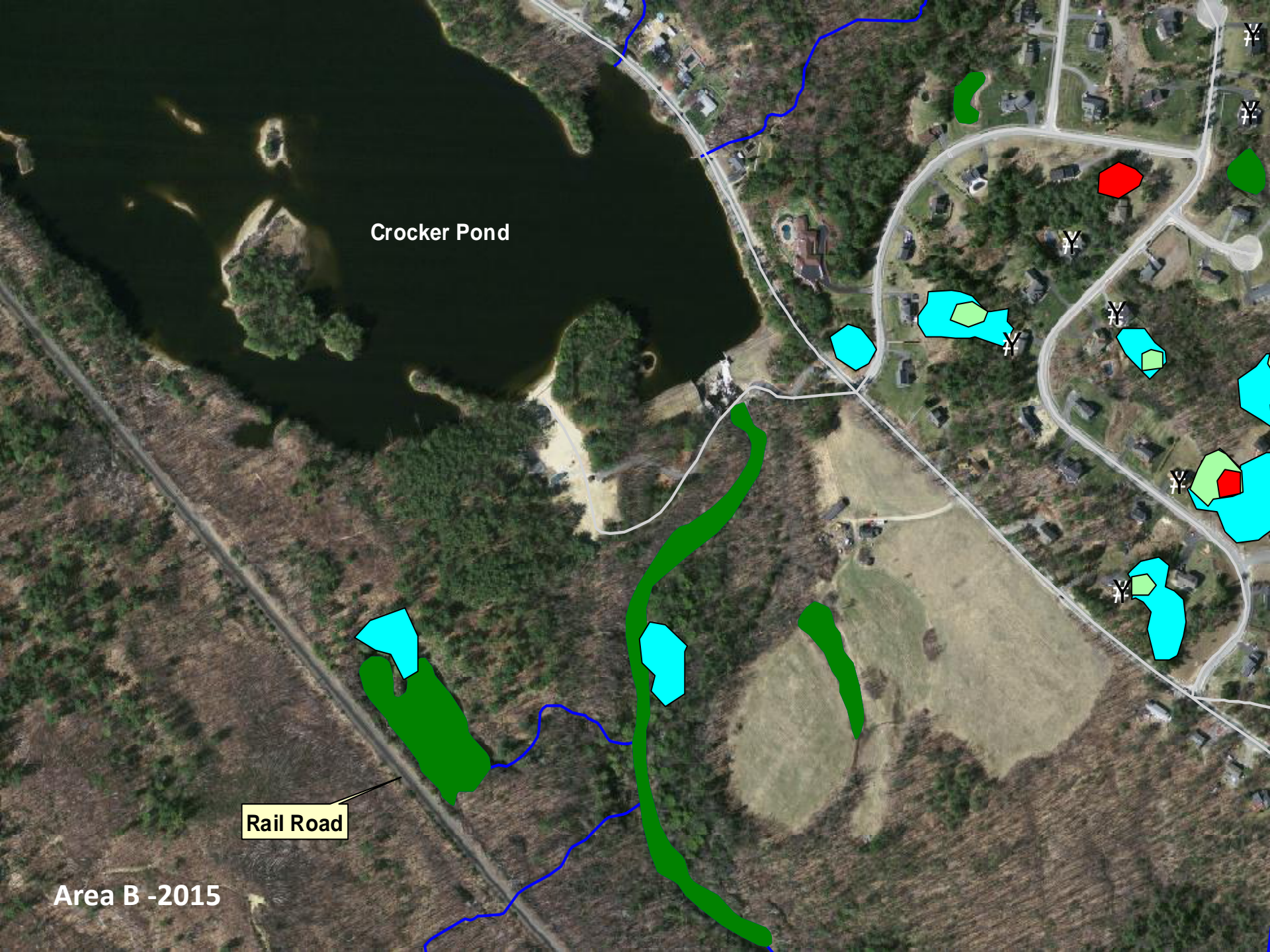
Adelgid spreads"



Crocker Pond

Rail Road

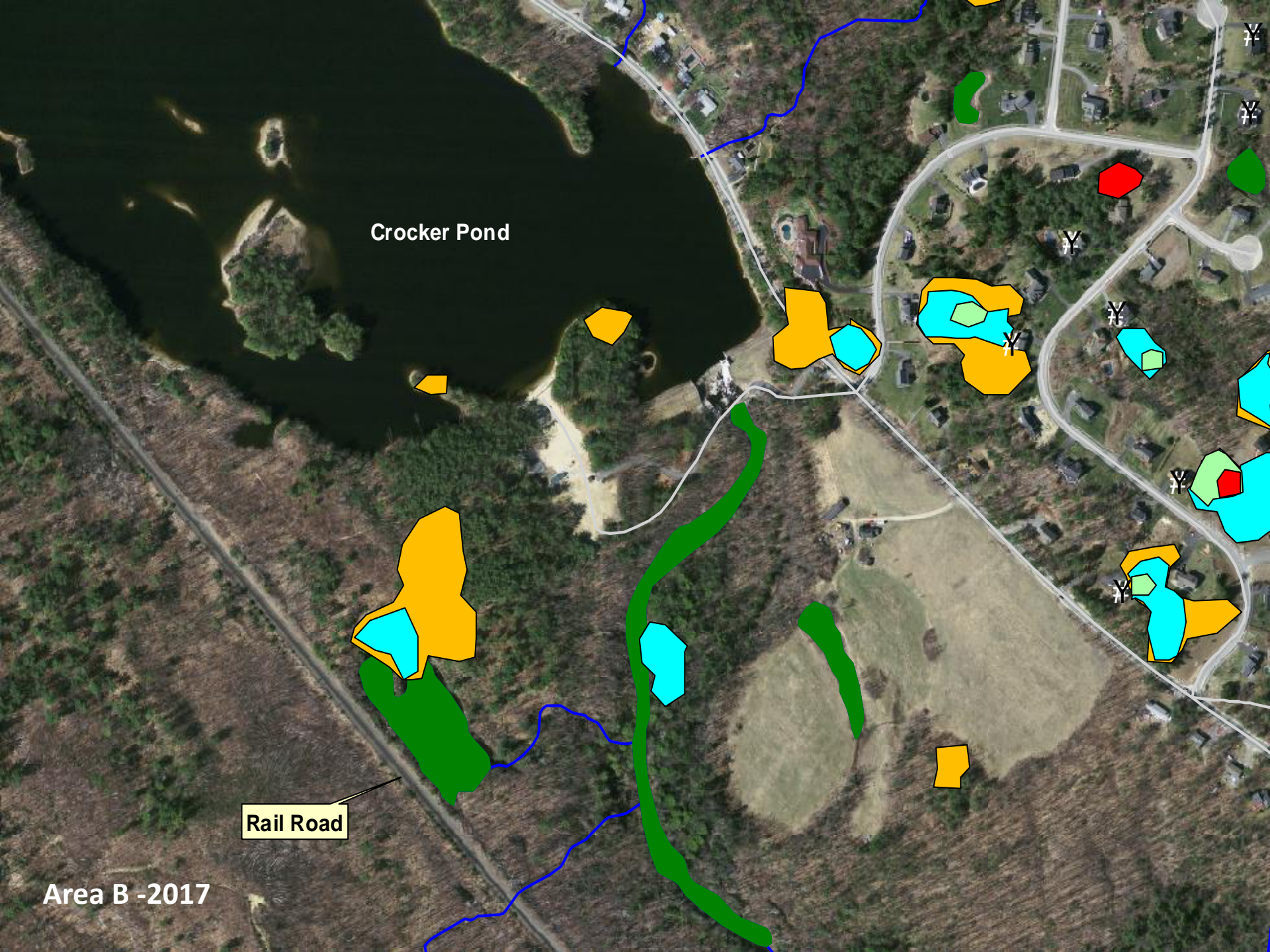
Area B - 2013



Crocker Pond

Rail Road

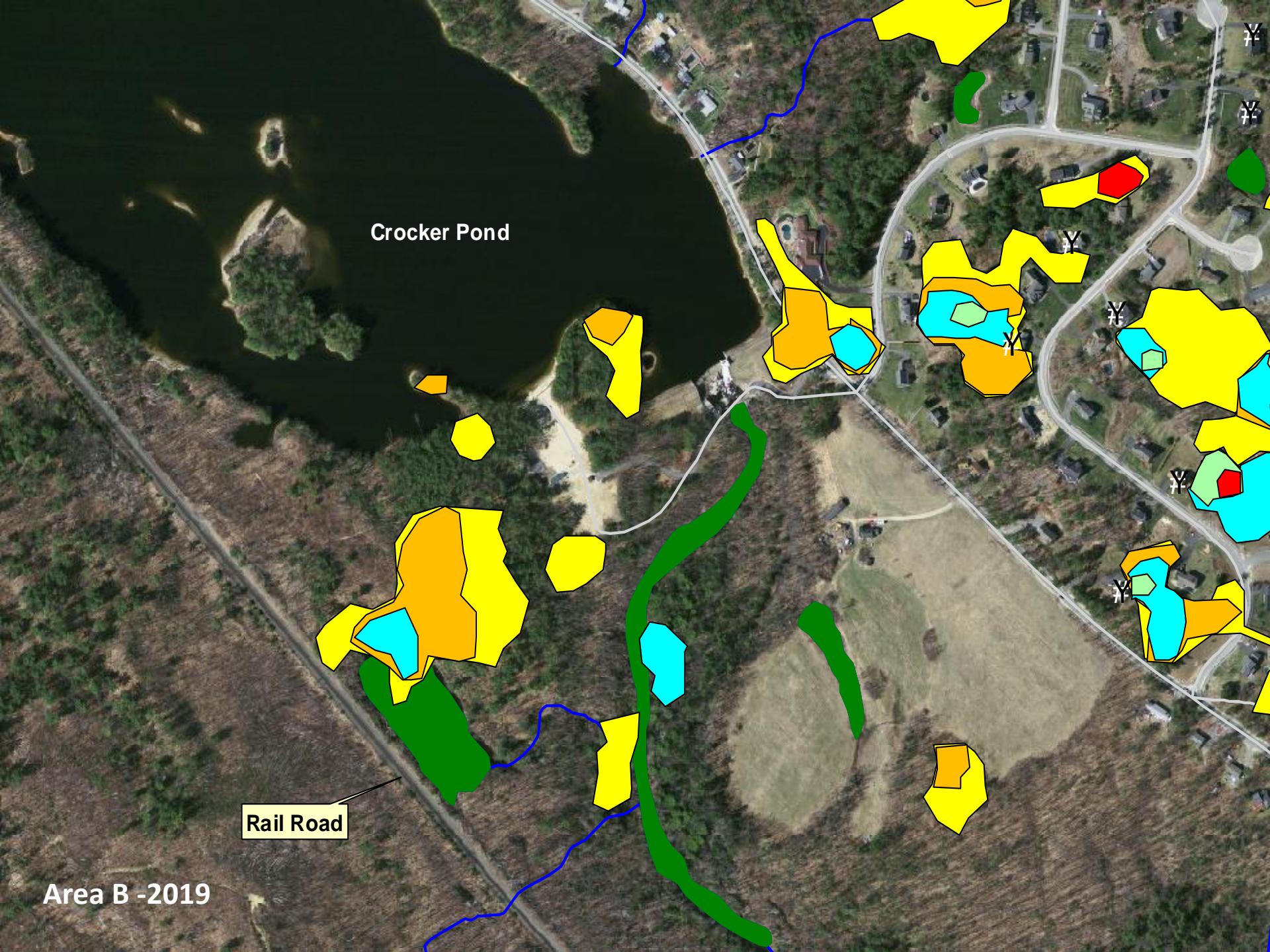
Area B - 2015



Crocker Pond

Rail Road

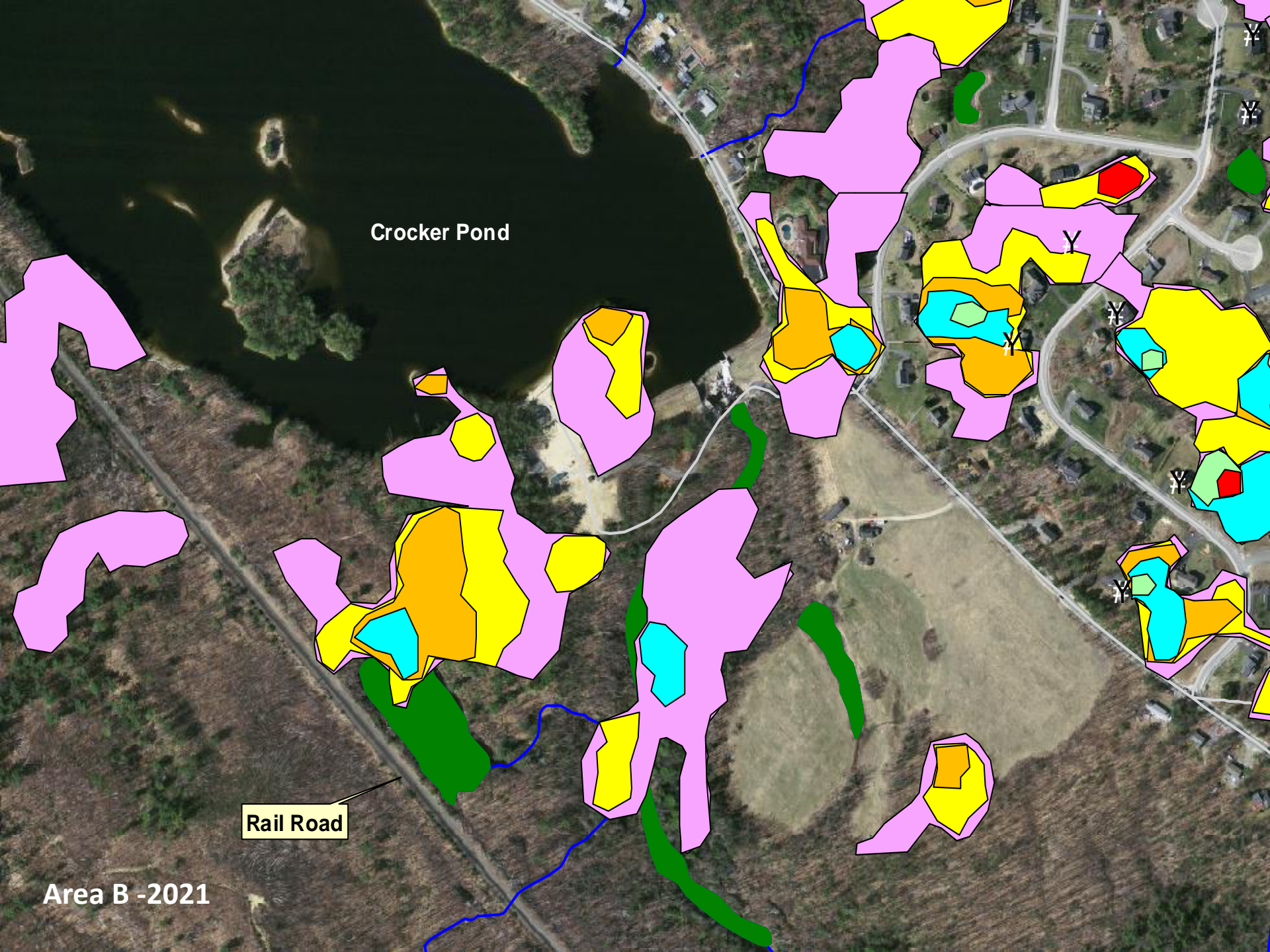
Area B - 2017



Crocker Pond

Rail Road

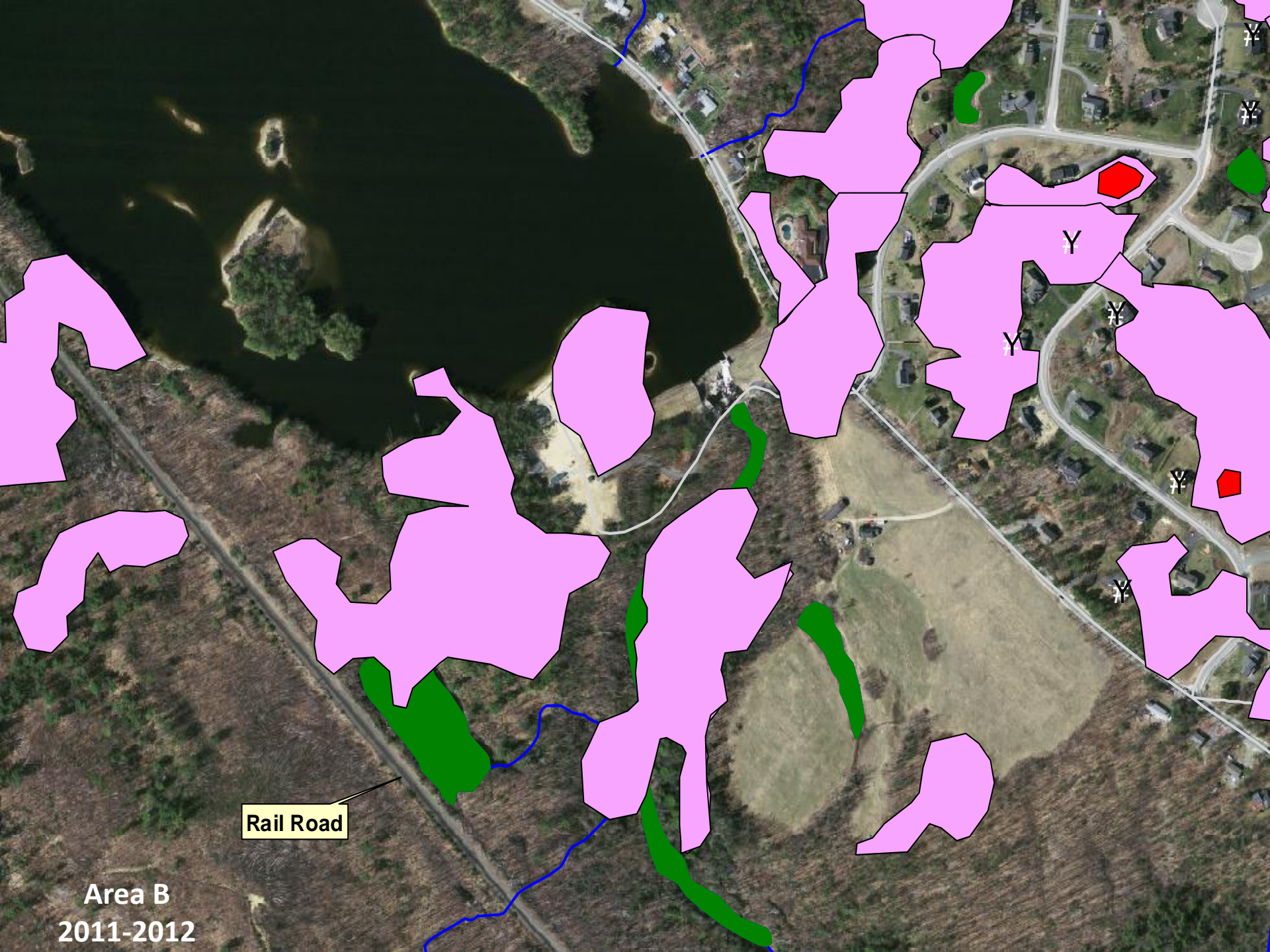
Area B - 2019



Crocker Pond

Rail Road

Area B - 2021



Rail Road

Area B
2011-2012

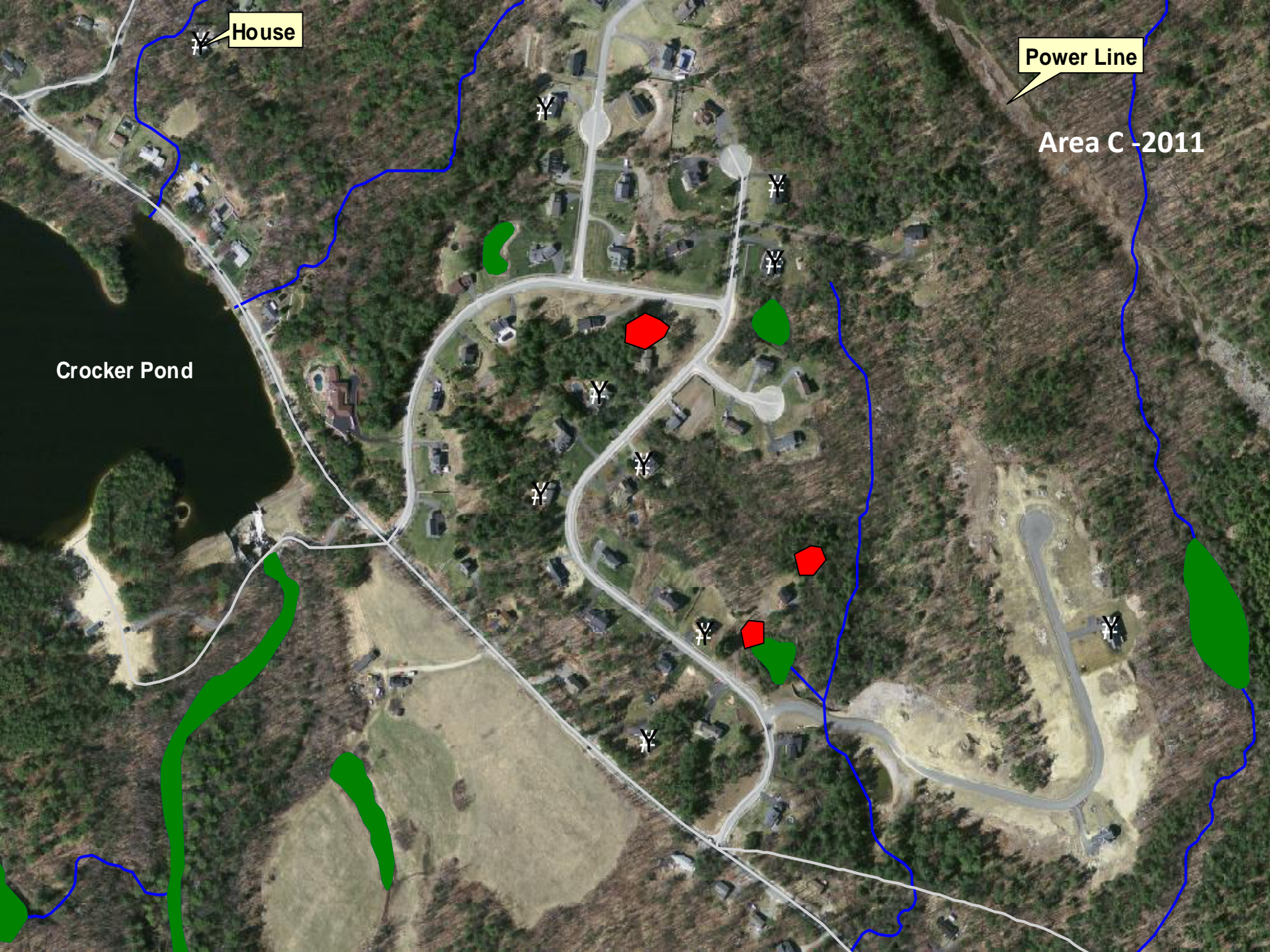
Emily's Neighborhood - Area C

Westminster, MA

"A simulation

2011-2012

Adelgid spreads"

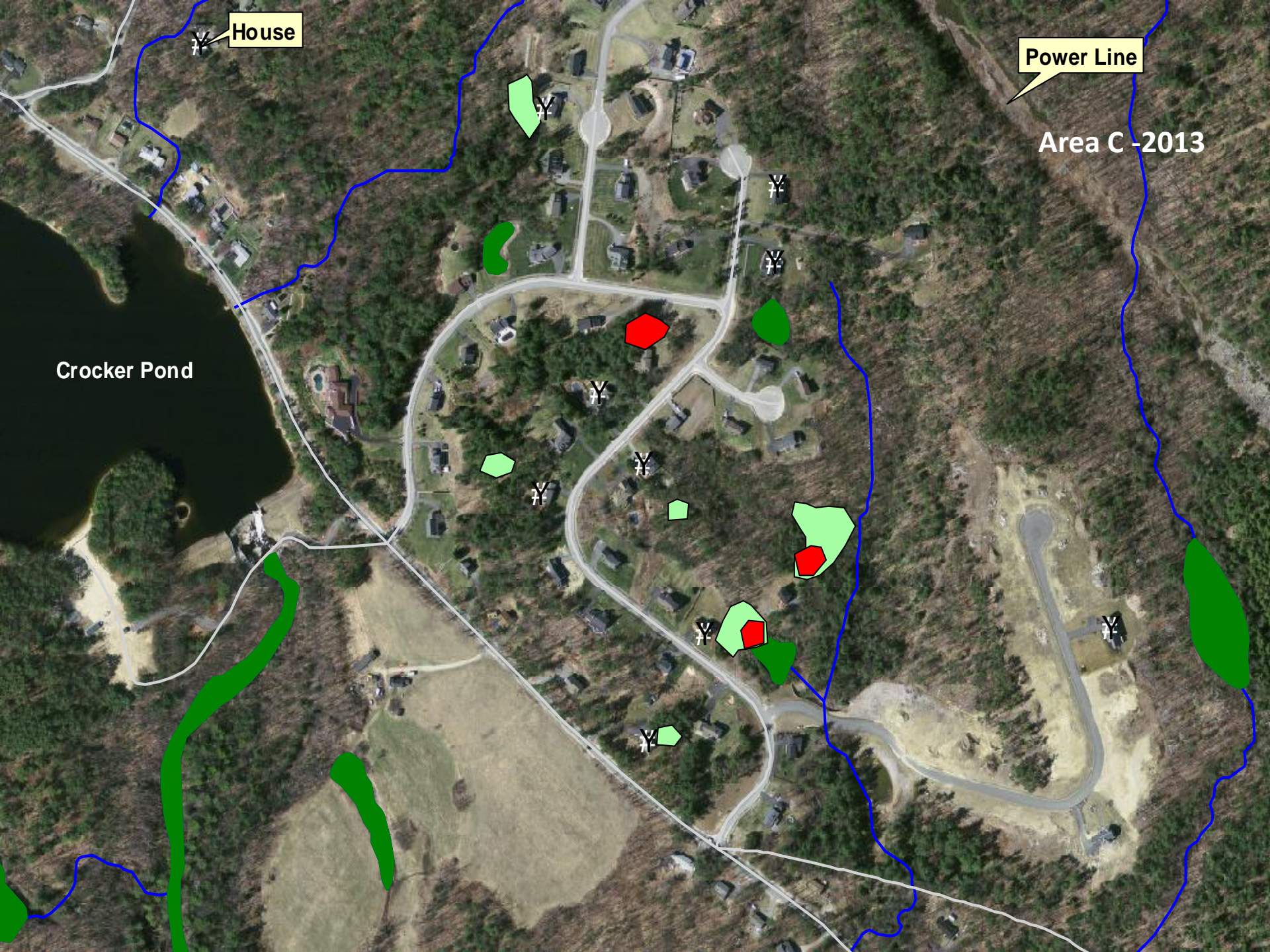


House

Power Line

Area C -2011

Crocker Pond

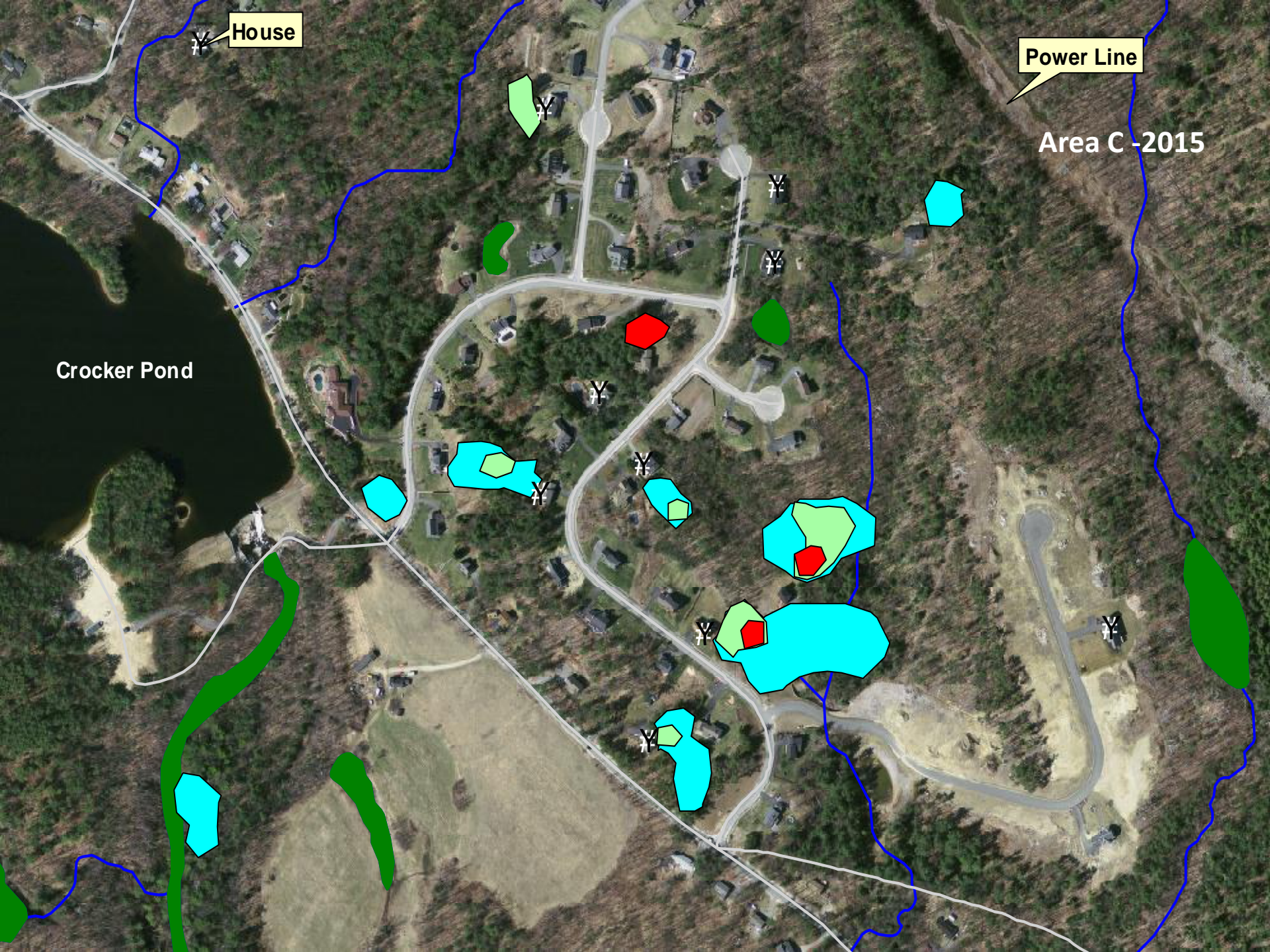


House

Power Line

Area C -2013

Crocker Pond



House

Power Line

Area C -2015

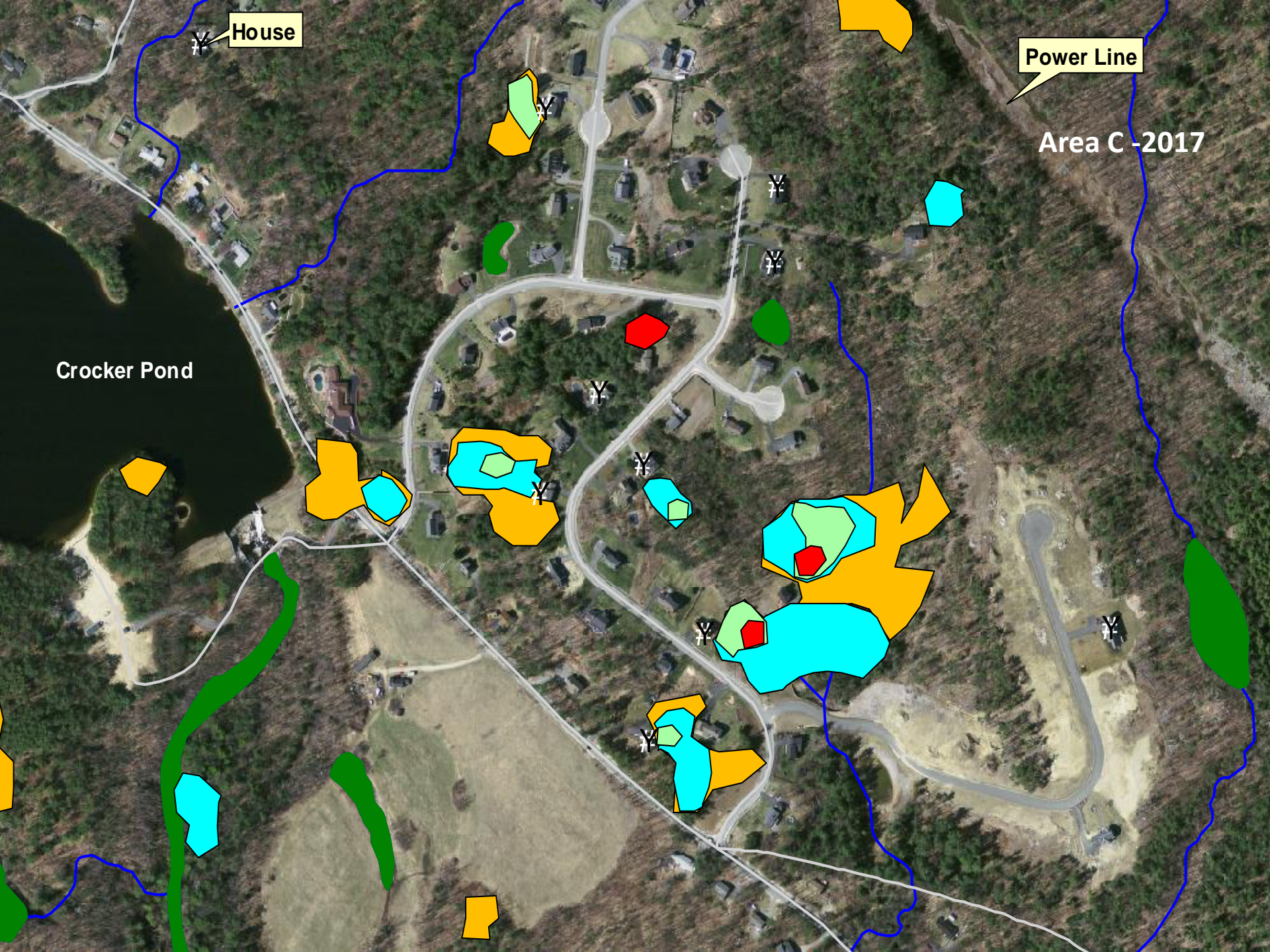
Crocker Pond

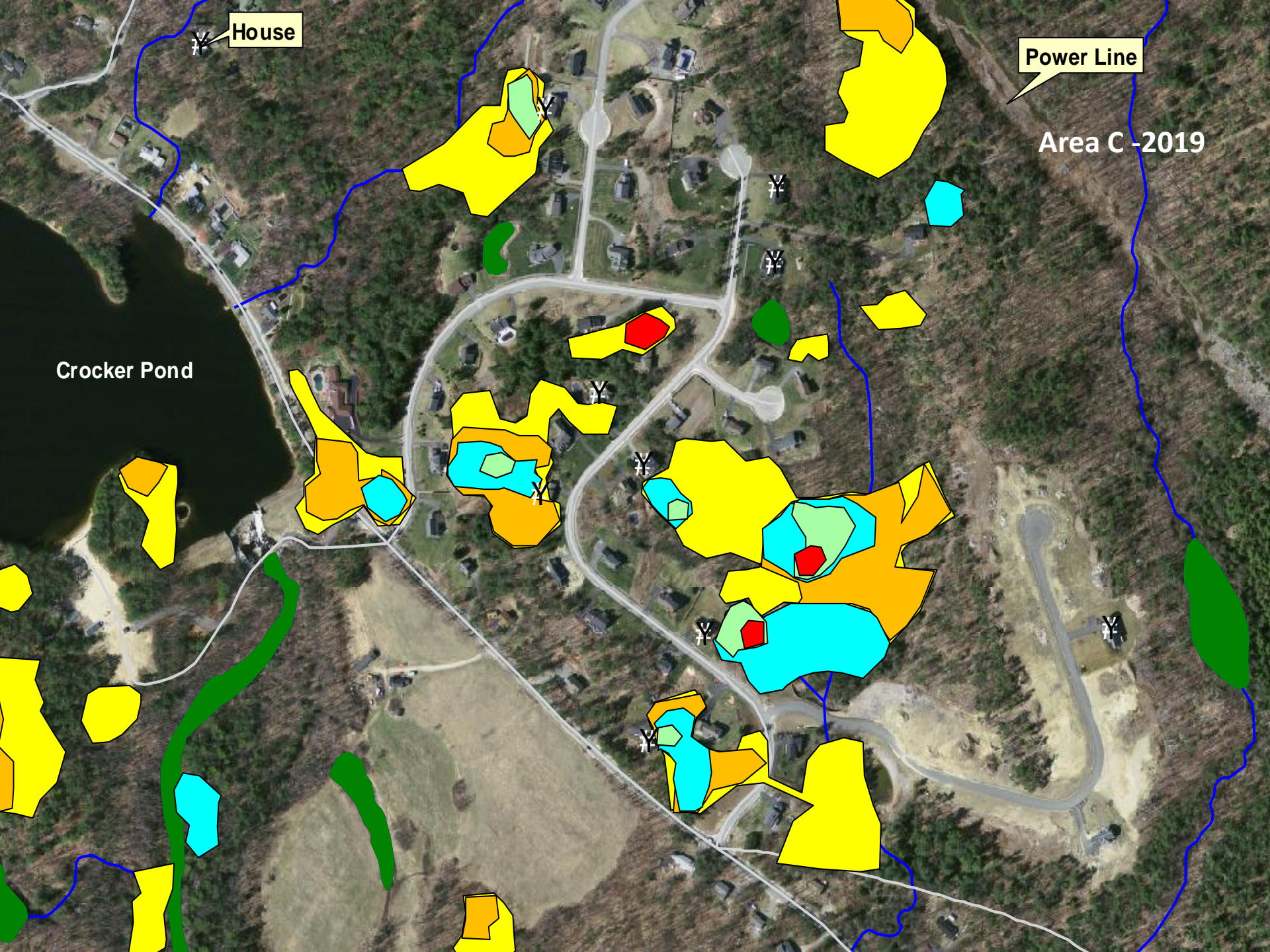
House

Power Line

Area C -2017

Crocker Pond



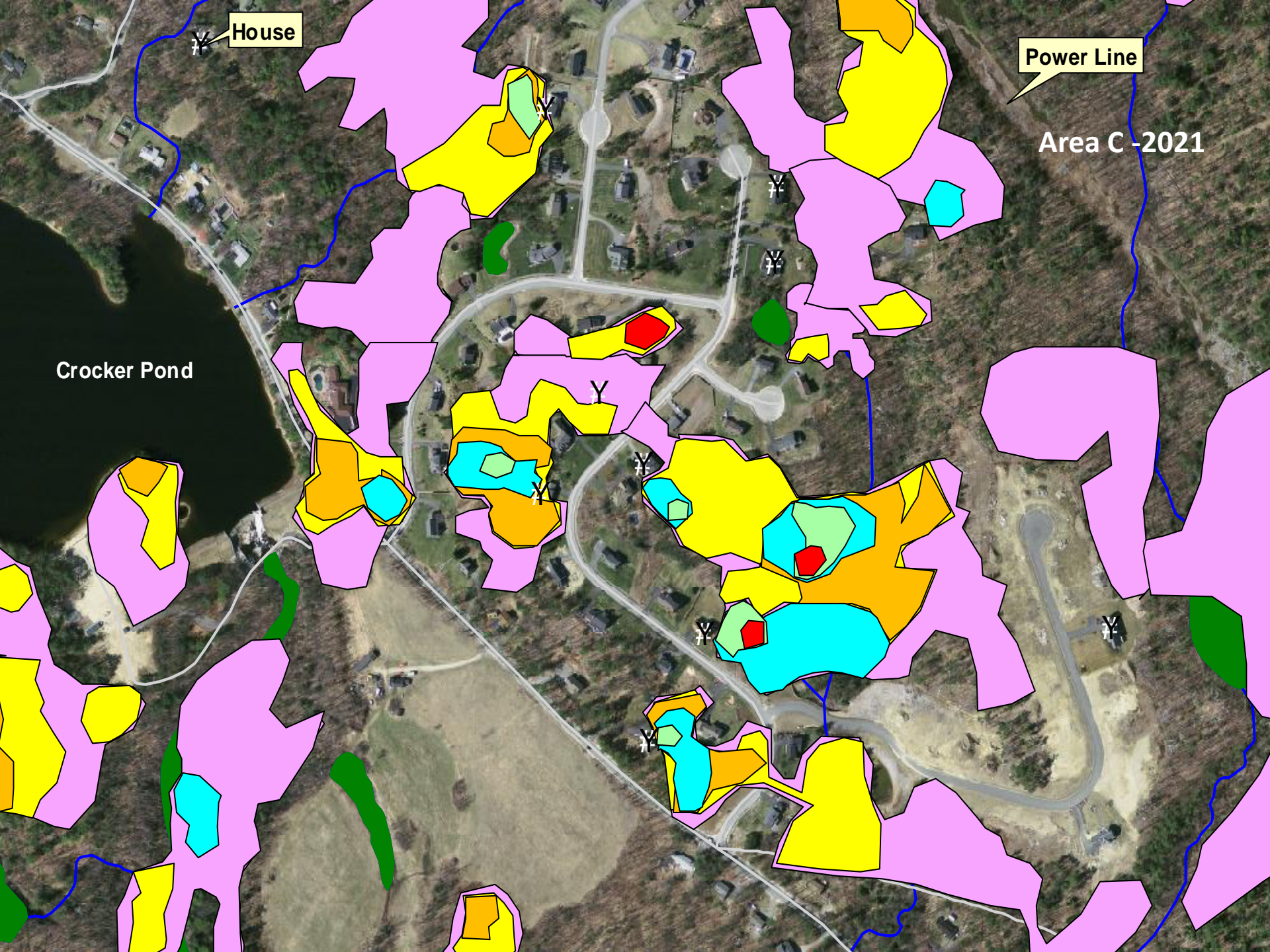


House

Power Line

Area C -2019

Crocker Pond

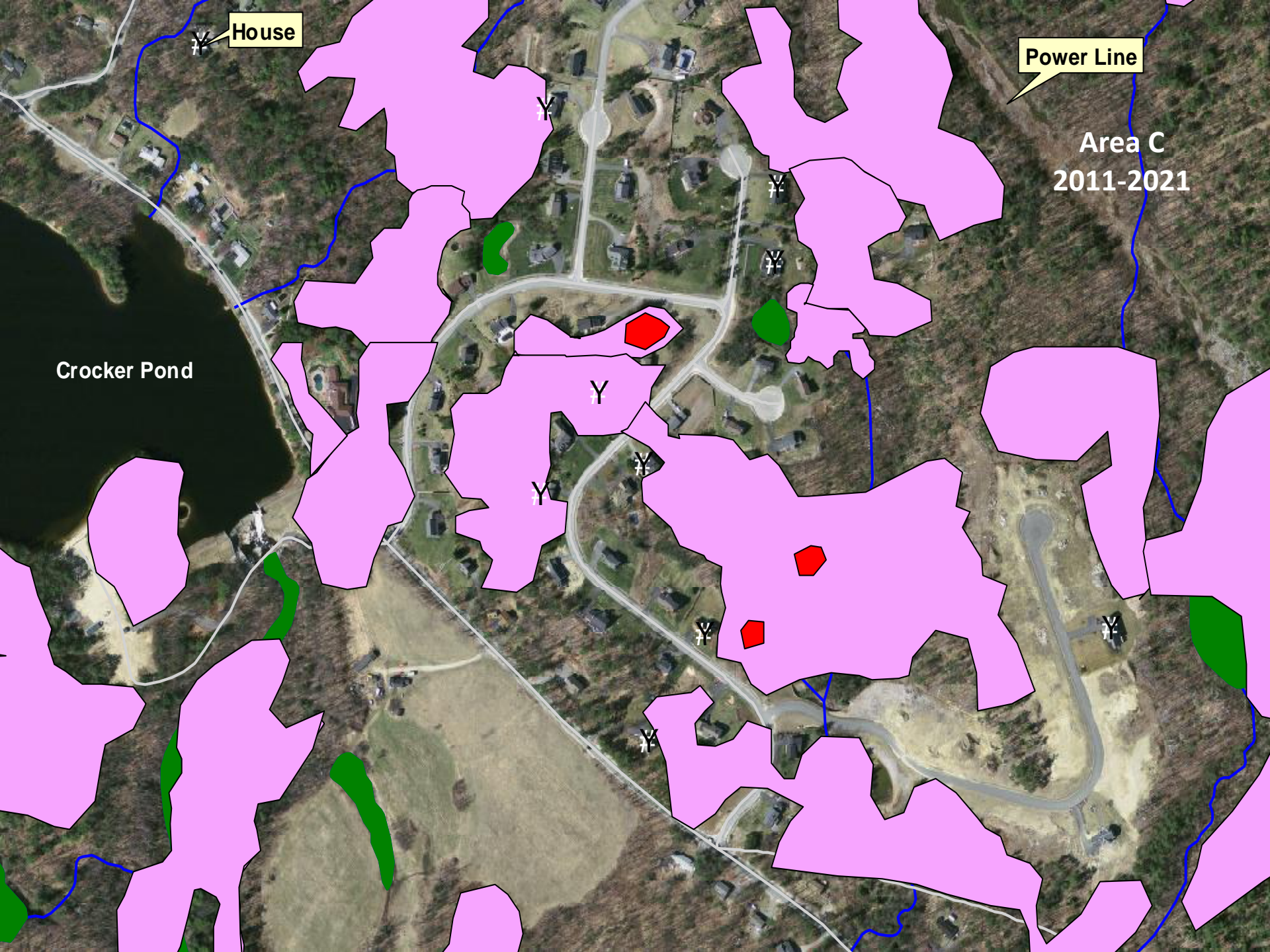


House

Power Line

Area C - 2021

Crocker Pond



House

Power Line

Area C
2011-2021

Crocker Pond

Controlling the Spread of Hemlock

Woolly Adelgid is critical

- ◀ Cut infested branches/dispose
- ◀ Remove heavily infested trees
- ◀ Dispose by burning with permit
- ◀ Wait until Adelgid are Dormant

Environmental Program
Oakmont Regional High School
Ashburnham, MA
Dr. S.L. Griffin
(Spring 2011)